

ROCKHOUND RAMBLINGS

NOVEMBER 2016 THE NEWSLETTER OF THE PASADENA LAPIDARY SOCIETY - PASADENA, CALIFORNIA



← Before

After →



← Before

After →

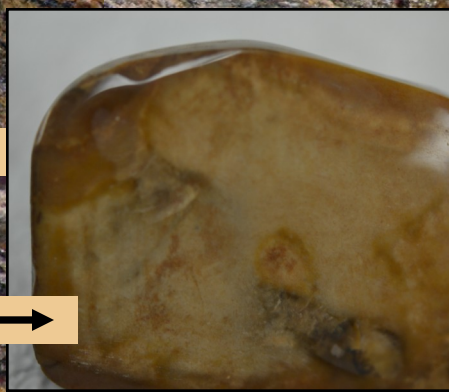


INSIDE THIS ISSUE



← Before

After →



<i>President's Message</i>	2
<i>Reports, Contact & Society Information</i>	2
<i>Ed's Corner Workshop Current Society News</i>	3
<i>Feature Articles Member Finds</i>	4
<i>Society Events Articles, Information and Photos</i>	5
<i>Field Trip Editor's Quiz Federation Reports</i>	6
<i>Tips, Safety, Member Highlights Rock & Gem Shows</i>	7
<i>Calendar</i>	8

LEAVERITE — Don't Judge A Rock By Its Cover

By Gloria Biesterfeld, Pasadena Lapidary Society

The recent field trip to collect petrified wood proved to be so fruitful that my attention wandered to rock specimens that were not beautiful, red and banded! As my mind wandered I was drawn to black, brown and yellow ugly rocks. Some had flecks of quartz, some dull bands of other colors, some with circular stains of another mineral. I wondered: What is special about these "Leaverite" rocks? Could there be a beautiful cabochon beneath this plain exterior? It occurred to me that since this is true with people, why not with rocks? So I picked up a few of these plain rocks and brought them to the PLS Workshop to cut them and do a quick polish on the third one shown on this page. Definitely jewelry material! The moral of this story is: **Don't judge a rock by its cover!**

Photos by Mark Nelson, Pasadena Lapidary Society



President's Message



Dear Members,
Fall has arrived with the changing of leaves and the many activities that are happening now and through the end of the year.

We had a very productive board of directors meeting and the workshop was well attended - with Carolyn demonstrating rock drilling and new member orientation. Ed Imlay has been providing *Cabbing 101* after the orientation for the new members. The program meeting was attended by many members and we welcomed nine guests. Thank you to Elizabeth Weston, Tony and Sandy Fender for their presentations!

We welcomed many members and guests from our Society, the North Orange County, Searchers and

the Whittier organizations to the field trip to the Whittier Claim and surrounding areas.

The Operating Rules and Regulations committee is making excellent progress and should be finished before year end.

Membership Chair Marcia Goetz and Carolyn Duncan, Workshop Chair, are working jointly to complete and provide the Workshop Rules and Workshop Safety Guidelines to all members. They will begin distributing these to all new and old members at the next workshop - to be held on November 13th. They are also confirming that everyone attending the workshop has signed a waiver of liability for the Pasadena Lapidary Society and a waiver of liability for Sierra Madre Partners for the use of their building. The Society is grateful for the use of this building for our workshop and as a show of appreciation, we should obey all rules and

safety guidelines and respect the boundaries set for our activities.

The Hospitality Chair, Cindy Lamarche, with help from Linda Nelson have spent a considerable amount of time searching for just the right place for our **70th Anniversary Holiday Party**. The details on page 3 — please plan to attend this special event!

Our November Program Meeting date has been changed because of the library's schedule. We will meet in the Library on November 22nd at 6:45 pm. Come early and enjoy refreshments provided by our hospitality committee. Bring lots of money for the raffle drawing - Carolyn plans to have some very cool prizes and you will not want to miss out!

I'm looking forward to seeing everyone at the upcoming Program Meeting!

Ellen Ferrell, President

Meeting and General Society Information

Officers

Ellen Ferrell, President
(727) 512-0381
Ellenbf2007 at aol.com

Mona Ross, Vice President
(626) 437-0150
mlr.attofgrat at gmail.com

Mark Nelson, Secretary
(909) 996-1784
Mnelsonair at aol.com

Linda Nelson, CPA, Treasurer
(909) 851-4407
Lnelson at verizon.net

FAIR USE NOTICE. This publication may contain copyrighted material the use of which has not been specifically authorized by the copyright owner.

We are making such material available in our efforts to advance the educational understanding of the amateur jewelry fabrication and rock collecting hobbies.

We believe this constitutes a 'fair use' of any such copyrighted material as provided for in section 107 of the U.S. Copyright Law.

If you wish to use material from this publication for commercial or purposes of your own that go beyond 'fair use', you must obtain permission from the copyright owner.

Newsletter Articles, ads or corrections should be sent to the editor: **Mark Nelson**, P.O. Box 5025, Pasadena CA 91117-0025 or by email to pasadenalapidary@aol.com. (909) 996-1784.

October Board Meeting by Mark Nelson, Secretary

Linda Nelson reported we took in more money than we spent. Receipts were \$1,161 and included bead sales at Bon Paphatsarang's class of \$918, meeting fund raiser \$108, vests and shirts \$55, dues of \$304 and contribution from Mark and Linda of \$96.

The board approved a motion to authorize Marcia to order additional vests and t-shirts. The cost was not stated. It was requested that some 4x and 6x vests and t-shirts be included in the order.

Joe Goetz made a motion that going to the workshop is optional and is not required as one of the three

activities to be a member and any three events will qualify. Carolyn reiterated that a person completing three events, excluding a workshop visit, they will be required to attend an orientation before participating at the workshop.

October Program Meeting

Elizabeth Wilson spoke poetically about Leaverite at the Rock Of The Month talk. Tony and Sandie Fender gave an excellent overview of Mt. Saint Helens - before and after the eruption.

The display table had a lot of items, and several members wore one of this month's birthstones as jewelry!

November Program Meeting

A desert historian, Bill Mann, once said "*everything on Earth is either farmed or mined*".

At this month's Program Meeting Marcia Goetz will show a video on mining in Bolivia and Columbia.

Come early at 6 p.m. and enjoy coffee and light refreshments by Cindy Lamarche's Hospitality Committee. Bring rocks and minerals for identification! The display table is for members to show items collected at recent field trips or in their travels.

Membership Information and Meeting Locations

Membership per calendar year is only \$25, \$15 for a second adult member in the same house. Junior members and the third or more members at the same house are \$10. Initiation fee is \$2 per person and membership badges are \$7.50. Renewals are due by the October General Meeting and delinquent after December 31st. Mail checks for membership to P.O. Box 5025, Pasadena CA 91117-0025.

Website:

www.pasadenalapidarysociety.org
Email: pasadenalapidary@aol.com

Board Meetings: 7:00 p.m. on the first Thursday of the month at the Castellano Building at 401 W. Colorado Blvd Monrovia, CA. A map and directions are on the website. All members are welcome to attend!

Program Meetings: 6:45 - 8:45 p.m. on the third Tuesday of each month at the Pasadena Central Library at 285 E. Walnut Street. Doors open at 6 p.m. **Guests are welcome!**

Field Trips are scheduled each month. Refer to the bulletin and website for date, location and info.

Workshop: The use of the club's equipment is available to members from 9 a.m. to 4:30 p.m. on the second Sunday of each month in our shop at 97 E. Montecito Ave., Sierra Madre. There are two sessions - from 9 a.m. to 1 p.m. and 1 to 4:30 p.m. Equipment proficiency is required and instruction is free. Fees are \$3 per session or \$5 for a full day. Bring lunch!

Safety: Liability waivers, eye protection, closed-toe, flat-heel shoes and machinery safe-practices are mandatory for all participants. Workshops are for adult members and junior members eight and older with adult supervision.



The Annual Club Show is held the second weekend of March at the Masonic Center, 3130 Huntington Drive, San Marino.

Advertising - a business card size ad is available for \$99 per year or \$10 per edition. Submit text, logos, business card or other copy to the editor at the address or email listed on this page.

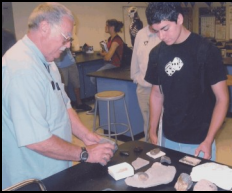


Ed's Corner

EDUCATIONAL OUTEACH

By Ed Imlay

Chair, Education Committee



Ed Imlay at a local school

Jennifer Nishimura has joined the Education Committee, which gave a presentation to the Washington S.T.E.A.M. Academy in Pasadena. To schedule our very special educational presentation to your group or school contact Ed by phone at (626) 286-8215 or by email: edimlay@hotmail.com

Identification: Would you like to know the name of a rock you have acquired? If you can polish or knock a small window off of a corner without damaging the rest of the specimen, please do so to expose the inside. Set it on the display table at the rear of the meeting room with a note asking "What is this?" and ask me about it!

Display Table: At the November Program Meeting you may display items of general interest, workshop projects and items you collected on field trips. Celebrate our gemstones of the month - **Citrine** and **Topaz** - by wearing or displaying something made from these birthstones!

**"Who first comes to this world below
With drear November's fog and snow,
Should prize the topaz's amber hue,
Emblem of friends and lovers true."**

Source: Gregorian Calendar - 1582



It is our **70th Year** and the Pasadena Lapidary Society has been awarded the **#1 Gold All American Club Award!** The best lapidary society in North America! We are going to celebrate this with a holiday dinner party!

Where: The Lodge At Sierra Madre (33 E Sierra Madre Boulevard in Sierra Madre).

When: Thursday, December 8th, 5pm - 7:30pm.

Cost: Bring a food item for the Friends In Deed Food Bank!

Dinner: Potluck style. Attire: Holiday Casual

I NEED YOUR HELP ! I need help decorating the hall and setting up the event, starting at 4:30pm. I need to know who is coming and what food item you will bring. There will be a refrigerator, if needed, and power for crock pots and hot plates. We will need main food dishes, salads, sides, baked items like rolls, and deserts. PLS will furnish coffee, tea, water, plates, utensils, napkins and centerpieces. To coordinate the meal items, contact me with either what you know you will bring, or if we can suggest an item for you to bring if we are short. If you can help with the centerpieces, come join me at my home in La Verne.

Contact me, Cindy Lamarche, at (626) 833-8710 or by email at grammiecyn@verizon.net

WORKSHOP — Drilling Stones



The workshop will have members working on continuing projects. All machines are up and functional. Help and advice is available for all members. I'm looking forward to seeing you all on November 13th.

If you are a new or prospective member who has not received a workshop orientation, please call me to be scheduled. 909-593-2781 or by email at: gem.quest@verizon.net

— Carolyn Duncan, Workshop Chair



**Welcome
New Members !!**



The Society is continually seeking new members, ideas and enthusiasm to assist us in sharing the enjoyment and understanding of earth sciences. **We welcome our newest member - Guzman Chavarria!** Share the lapidary and jewelry hobby! Invite your friends and neighbors to one of our monthly meetings to learn more about the Pasadena Lapidary Society!



ROCK OF THE MONTH PRESENTATION

Elestial Quartz Crystals? Listen to Chris Kyte explain these unique minerals at the November Meeting! To sign up to talk about **YOUR** favorite stone or related subject contact us by email at pasadenalapidary@aol.com.



The final date for our 2016 membership renewal is December 1st. Send your renewal to: PLS, P.O. Box 5025, Pasadena CA 91117-0025.

The dues amounts are at the bottom of page 2.

Rockhound and Junior Rockhound Of The Year!

Thanks to everyone who participated in helping our active members receive the honor of being named as our 2017 Rockhound Of The Year and the Junior Rockhound Of The Year! The Board will ratify your decision at the November Board Meeting!



Find us on
Facebook



Like

Follow us on Twitter!

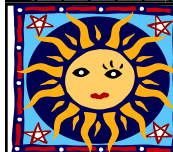
<https://twitter.com/pasalapidary>



Meeting Refreshments:



Program Meeting Refreshments — Thanks to **Jodia McLeod** and **Susan Carter Soohoo** for their treats at the October meeting! **Jeff Dengrove** and **Martha Wilson** have volunteered to bring refreshments at the **November** meeting! **To volunteer to bring refreshments** ∞ Contact me at (626) 833-8710 or by email at grammiecyn@verizon.net.... Cindy Lamarche



Sunshine:

Thanks to **Nick Taminich** for donation of supplies to the workshop, and for the specimens donation by **Helen Wong** from the Eaton Canyon Nature Center. ∞ Congratulations to **Jennifer Nishimura** and **Paolo Sanchez** for their wins in the CFMS bulletin article contest ∞ At the October meeting we saw **Elizabeth Weston** doing very well after double knee replacement ∞ Our thoughts are with **Joshua Sanchez** on his emergency appendectomy and to **Mary Kirmil** and **Tim Dirks** on the passing of their cat! *The Pasadena Lapidary Society has a Sunshine Committee to send cards and words of comfort and support and congratulations to our members who are in need or who are deserving of it. Call me already....or email me! My contact info is shown above* ∞ **Cindy Lamarche** — Society Yenta !





Leaverite

By Elizabeth Weston, Pasadena Lapidary Society

You might have started before you were nine you picked up a rock and thought 'What a find!'

Or as an adult, a rock called from the street you picked it up and thought it was neat!

How many years? How many stones? Some of them rock Some of them bones

If you're new to this fun You've ventured to ask What is this rock in the sun? Granite, shale, or glass?

You've picked them up - yet wondered each time why you took them home when they ain't worth a dime.

They come in shades of red, yellow and blue – beige, black, brown ... so many a hue.

What they are and where they're from Are they worth the effort? Should you stay mum ?

Out on a fieldtrip You've toiled for hours picking up rocks till you need a shower

Your bucket weighs a ton as you return to your car thinking: identifying will be fun and your energy's sinking

You pull out your specimen book and flip through the pages -

- imagining how this rock has survived through the ages

Somehow you can't find a fitting description You search and you search Till you have a conviction

If only you'd listened to your like-minded friends Don't pick up! - They warned you about rocks without sparkle you're wasting your time you're not being artful!

You've seen them on fieldtrips, all over the ground Or on a show dealer's table at a price that will astound

Is it a Simili or Strass diamond? or a glass imitation? Does that Viennese turquoise Lead you to temptation?

Sure, it's pretty, you think As you drop it in your bag Like so many others, Its weight makes you drag

What's that dark rock ? It's metallic and long- It might be a meteorite But it's a meteorwrong!

Although it looks good Your will you should harden Cuz once you get home It's just fit for the garden

-SIGH- ...

It's not always easy It's not always fair But sometimes one has to Just Leaverite there!

Thundereggs Of Oregon

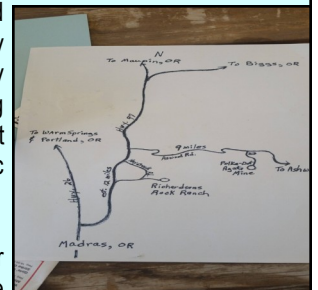
By Jared Nishimura, Pasadena Lapidary Society

Recently, my family and I went on a rock hunting expedition to Oregon. Though we visited some old friends, we also allowed plenty of time for collecting thundereggs. The thunderegg is a nodule which looks like a geode on the outside, but is completely filled with silica gem material. Like geodes, they are found within layers of volcanic ash. Thundereggs were designated the Oregon state rock in 1965, but they have been highly prized for at least 100 years. This is because the exquisite centers of these rocks make lovely book ends, jewelry, and pendants.



Thundereggs look like ordinary rocks on the outside but slicing them in half will reveal the beauty within. Many thunderegg centers even contain combinations of agate, jasper, or opal, which makes each thunderegg a unique specimen.

Although thundereggs can be found for free all over Oregon, the best material is found on ranches. Ranches are private property, but the owner allows people to come in and gather rocks which are then purchased by the pound. We collected on many ranches near Prineville, Oregon, including the Friend's Ranch, the Polk-a-Dot Ranch, Richardson's Ranch, and Alex McDonald's Ranch.



Most of the ranches charge one dollar for a pound of thundereggs, although some of the better material is sold for up to three dollars per pound. The owners do not allow collectors to crack eggs to see what is inside, so you will have to be very selective in what you decide to buy. It adds up to a lot of money quickly.

It is important to bring certain tools while hunting, as the eggs will often have to be pried out of fairly solid ash layers. A rock hammer, a short handled sledge, a spray bottle, a pick, safety glasses and a gad are fairly standard tools needed for egg hunts. Some ranches will rent or loan tools needed for digging.

Thundereggs are by far the most popular rock in Oregon and people come from miles around to collect the unique designs and patterns. My personal favorites were the opal thundereggs. Though they are not precious opal, the light green and pink is an unusual opal color combination. If you have never been to Oregon, no trip is complete without bringing home some thundereggs from a ranch. Everyone will appreciate the beauty of a cut and lap polished egg. Slabbed eggs make great cabochon jewelry. In addition, since you will not spend precious vacation hours searching, the chances for egg hunting success are positive indeed! — Jared.



The History Project reminder...

Attention veteran PLS members! Do you have old pictures from pre-Year 2K days of the Pasadena Lapidary Society? Fond memories you would like to share? Any Club memorabilia from the years spanning 1946 – 2009? If so, the History

Committee would love to talk with you! Please contact **Elizabeth Weston** at 213-308-5558 or **Mona Ross** at 626-437-0150. All members are invited to help! Toss an email to Elizabeth at pasadenalapidary at aol .com!



Mining Supplies and Rock Shop

Gold panning equipment, dry washers, gold pans, metal detectors, tumblers, rock saws, polishing equipment, lost wax casting, soldering silver and gold jewelry.

We buy and sell gold and silver and carry a nice supply of rocks and minerals, jewelry, findings, tumbled glass and rocks, rock slabs and cabs, silver wire and sheet, beads, and more.

We support lapidary clubs!

Activities, Tips and Information



The October field trip to the Whittier Claim and Barstow area had plenty of rocks from which to collect!

Photo by Valerie Stathatos.



A palm tree outside of the Oak Tree Inn offered shade for our energized mineral collectors!

Photo by Valerie Stathatos.



After a hard day of collecting in the sun - what better way to relax than a nice meal at Peggy Sue's Diner!

Photo by Valerie Stathatos.



Not a science fiction thriller, but one of the many examples of yard art in the tiny town of Keeler - near where the November field trip will be. It's a worthwhile drive through the town!

Photo by Bruce Lamarche.

Find or see something interesting on your field trip, vacation or show? Send a photo and description to the Editor by the 15th of the month! We'd all like to see them!

FRIENDS IN DEED*

*Doing together what we cannot do alone

December Food Drive!

Buy one extra item when you next shop for your household. Clean out your pantry! Bring them to a Society event this month. Non-Perishable Foods such as peanut butter, tuna, chicken, chili, beef stew, dry beans, pasta, oats, rice, cereal, milk (shelf stable or powder), jelly, tomato sauces, soups, cooking oil and other baking items, travel soaps and shampoo items. **Bring Perishable Foods** - such as fresh fruits and vegetables from your garden, milk, yogurt, cheese, eggs, cold cuts and frozen chicken to upcoming December Society events. See the Calendar Page of the web site for more information.

Activities, Tips and Information

REMOVING SOLDER FROM A BEZEL

by Brad Smith, Culver City Rock And Mineral Club

Sometimes when you solder a bezel to a base plate, you end up with excess solder that needs to be removed before setting the stone. My choice of tool for this is called an "Inverse Cone" bur used in a rotary tool or flexshaft.



It cuts on both the bottom and the side and is shaped so that there's less chance of cutting into the bezel wall than if you used the more common cylinder bur shape. I find the 2 mm size useful for almost any bezel.

Happy hammering!

Bench Tips for Jewelry Making: 101 Useful Tips from Brad Smith by Bradford M. Smith - available at www.amazon.com

Member Creations



Pendant

Dichroic Glass - fused in sections for greater light diffraction and set in 14KGF by Gloria Biesterfeld



Pendant

Larimar cabochon set in sterling silver and embellished with silver chain by Stephanie Trat



Pendants

Swirls of copper rosettes crafted without soldering by Bon Paphatsarang.



Pendant

Sterling silver set with faceted Peridot gems by Mark Nelson



Office: (909) 444-2727
Cell: (909) 455-6800
email@forestandsun.com



Y2K Jewelers
917 W. Arrow Highway
San Dimas, CA 91773
(909) 592-4200



A 3rd generation family jewelry business. We manufacture our jewelry, as well as repurpose antique jewelry. We repair your old or broken jewelry in our store. At Y2K Jewelers we strive to make high quality, beautiful jewelry. Come in today to be blown away by our beautifully unique jewelry! Bring this bulletin for a special Lapidary Society discount!

Armando Pedroza
Pasadena Lapidary Society
www.forestandsun.com

Full Tree Services, Property Maintenance, Landscape Design and Installation, Hardscape Services, Petrified Wood features, Retaining Walls, Driveways, Water Features, Outdoor Kitchens - and more! References and photos.



FIELD TRIPS

By Joe Goetz



Joe Goetz
Field Trip Chairman

Owens Valley, CA
November 23rd to 26th, 2016



Thanksgiving is about family and friends sharing a big meal of roast turkey and fixings. For a rockhound family it could mean an extended trip farther out than what is normally done!

When: Meet at camp Wednesday evening, November 23rd. Return Sunday the 27th.

Meet: Thursday, 8am, at the entry to Diaz Lake Campground south of Lone Pine. The daily meeting place will be determined on the daily schedule.

Collecting: Garnets in the Tungsten Hills, ammonites in Union Wash, crystals at Crystal Ridge, beryl and epidote near The Haystack - and other great areas!

Safety: Site specific safety concerns will be addressed each day. Refer to your Member Handbook for standard safety equipment for field trips.

Accommodations: Camping sites and motels are available at Lone Pine and Big Pine.

See details on the web site.

Going Somewhere.....
Joe Goetz (626) 260-7239



Congratulations to Harold Vannatta who knew that the type of mineral collected by The Tenderfoot was Actinolite!

Congratulations also to Allyson Nishimura for being the first Junior to answer that the two minerals that one was likely to collect at the October field trip to Trona was Hanksite and Halite.

Prizes were awarded at the October Program Meeting!



Editor's Quiz

Juniors: What kind of rock is on the cover of this month's bulletin?

Adults: What kind of rocks do your like-minded friends warn you not to pick up?

The answers to this month's quiz can be found in this bulletin. The first Adult and Junior Members to correctly answer these questions will win a special prize at the next Program Meeting.

Email your answer to the Society's email address: pasadenalapidary@aol.com



Kingsley North, Inc.

P.O. Box 216 • 910 Brown Street
Norway, MI 49870-0216

**Your Complete Lapidary
and Jewelry Supply House**

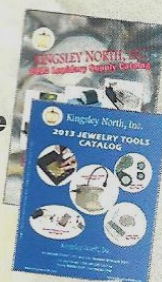
FREE Catalogs

Phone: 800-338-9280

Web site: www.kingsleynorth.com

Email: sales@kingsleynorth.com

Fax: 906-563-7143



FEDERATION NEWS

By Joe Goetz

CFMS - California Federation of Mineralogical Societies

CFMS FALL BUSINESS MEETING



The annual Fall Business Meeting and election of 2017 Officers will be held November 11 - 13, 2016 at the Wyndham Hotel, off Hwy 198 in Visalia, CA. Room reservations can be made by phone at (559) 651-5000.

To receive the special CFMS rate of \$89 per night, tell them you are with CFMS. All PLS members are welcome to attend!

An informal Cracker Barrel will be held Friday evening at 7:30 p.m., The Business Meeting will be called to order on Saturday, November 12 at 9 a.m. President-elect Margaret Kolaczyk will have a brief meeting of her 2017 committee chairpersons on Sunday morning.

AFMS - American Federation of Mineralogical Societies



Keeping Public Lands Open For Rock Collecting



The recent Envisioning Session for the Mojave Trails National Monument (MTNM) was held in Barstow, recently. Rex Nishimura, of the Pasadena Lapidary Society, was in attendance and has a thoughtful report on the proceedings. See Rex's report on the Member Tools page of the web site!

10 fun facts we bet you didn't know about Thanksgiving

By Saeed Ahmed, CNN

- Thanksgiving is ranked as America's second most popular holiday, after Christmas.
- The Pilgrim's thanksgiving feast in 1621 occurred sometime between September 21 and November 1. It lasted three days and included 50 surviving pilgrims and approximately 90 Wampanoag Indians, including Chief Massasoit. Their menu differed from modern Thanksgiving dinners in that it included berries, shellfish, boiled pumpkin, and deer.
- Leaving a legacy: When Abe Lincoln declared Thanksgiving a national holiday, it was thanks to the tireless efforts of a magazine editor named Sarah Josepha Hale. Her other claim to fame? She also wrote the nursery rhyme, "Mary had a Little Lamb."
- The first Thanksgiving in America actually occurred in 1541, when Francisco Vasquez de Coronado and his expedition held a thanksgiving celebration among the Teyas Indians in Palo Duro Canyon in the Texas panhandle.
- In 2007, President George W. Bush granted a pardon to two turkeys named May and Flower. While the tradition of presidents pardoning Thanksgiving turkeys began in 1947, Abraham Lincoln is said to have informally started the practice when he pardoned his son Tad's pet turkey.
- Going shopping?: Not if you're a plumber. Black Friday is the busiest day of the year for them, according to Roto-Rooter, the nation's largest plumbing service. They are called in to clean up "overwhelmed" sewer systems.
- Pilgrims did not wear buckled hats or dress only in black and white. Buckles did not come into fashion until later in the 17th century, and the pilgrims usually saved their formal black and white colors for Sunday.
- Gobble, gobble?: Not so fast. Only male turkeys, called toms, gobble. Females, called hens, cackle.
- Have it your way: If Ben Franklin did, the turkey would be our national bird. An eagle, he wrote in a letter to his daughter, had "bad moral character." A turkey, on the other hand, was a "much more respectable bird."
- Born in the U.S.A.: Thanksgiving is not just an American holiday. Canadians celebrate it too. Except they do it the second Monday in October.



MEMBER HIGHLIGHTS, TIPS, HINTS AND SAFETY



Members Teaching Members — Bon Paphatsarang — PLS Member

Bon's education in jewelry making began as a boy in Thailand, where he learned how to use his imagination instead of relying on pre-fabricated jewelry pieces. Following high school in the San Gabriel Valley Bon continued his education at Cal State Los Angeles - earning the prestigious Certificate of Jewelry Manufacturing...

and his vocational and children teaching credentials.

Bon's dedication - to teaching others the skills he has learned - led to a 20-year teaching career at Mt. San Antonio College and 24 years with the Baldwin Park School District. He has shared his knowledge with quite a few PLS members and invites them to join his class at the Baldwin Park Adult School. There they will learn basic silver smithing with a series of projects designed to teach basic skills and enhance confidence. Some of his projects can be seen at his web site: www.bonsilverdragon.com.

Classes are on the 9-week quarter system, Monday through Wednesday - day or evening sessions. The best way to see what he has to offer is to come by the class in the fine arts building at 3818 Monterey Avenue, Baldwin Park. For information, go to www.bpsd.net/adult and select Fine Arts or email him at —

Bon at bonsilverdragon.com



Upcoming Events

- November 19: Jewel Tunnel Field Trip
November 22nd: Monthly Program Meeting (new date)
November 23rd - 26th: Owens Valley Field Trip
December 8 - 70th Anniversary Holiday Party
January 17: Monthly Program Meeting
January 18: Quartzsite Shows Field Trip

Articles and photographs printed in this bulletin are as credited to their author. Items not so credited are written by the Editor and are not an expression of the Pasadena Lapidary Society. Photographs not credited are from the public domain or from the Editor and are used for educational purposes.

Carpet City

"Thanks for the education you gave my son". - Basem Jibrin, Member Pasadena Lapidary Society

∞ Carpet ∞ Tile ∞
∞ Hardwood ∞ Laminate
(909) 392-2200

Special Financing for PLS Members!

BIG DISCOUNTS to members of the Pasadena Lapidary Society!

Free Estimates!

LOCAL ROCK AND GEM SHOWS

November

5-6: ANAHEIM - American Opal Society at the Business Expo Center, 1960 S. Anaheim Way. Sat 10 - 6; Sun 10 - 5. www.opalsociety.org

Look for the gem shows symbol in the calendar on page 8.



5-6: RIDGECREST - Indian Wells Gem & Mineral Society at the Desert Empire Fairgrounds, 520 South Richmond Road. 9 - 5 daily. Field Trip to Rainbow Ledge! See the PLS web site. Email: jfrocks@dslextre.me.com

Please plan to attend one of the lapidary club shows listed on this page, and wear your club badge, shirt or vest when you do! - Editor

5-6: SAN DIEGO - San Diego Mineral & Gem Society at the Al Bahr Shrine Center, 5440 Kearny Mesa Blvd. Sat 9:30 - 5:00; Sun 10:00 - 4:00. www.sdmg.org

11-13: SANTA ANA - Wholesale and Retail Show at the Holiday Inn-Orange County Airport; 2726 S Grand Ave; Fri. 10 - 6, Sat. 10 - 6, Sun. 10 - 5; Free Admission. www.mzexpos.com

19-20: OXNARD - Oxnard Gem & Mineral Society at the Oxnard Performing Arts Center, 800 Hobson Way. Sat. 10 - 5; Sun. 10 - 4. New: Book and Plant Sales, jewelry and mineral curiosities from around the globe! www.oxnardgem.com

26-27: WICKENBURG, AZ - Wickenburg Gem & Mineral Society at the Hassayampa Elementary School, 251 S Tegner Street. Sat. 9-5, Sun. 10-4; Free Admission. www.wickenburggms.org

December 3-4: BARSTOW, CA - Mojave Desert Gem & Mineral Society at the Cora Harper Community Center, 841 S. Barstow Road. 10 - 5 daily. www.mdgms.net



Society logo items are available to our members through Marcia Goetz, Acting Membership Chair. Phone: 626-914-5030 Email: joenmar1 at verizon.net. Vests = \$10, T-Shirts = \$15, Hats = \$11 and replacement member badges = \$9 (specify either magnet or pin mount)

The rock on the bulletin cover? It is called "Brazilian Schist".



Member - To - Member

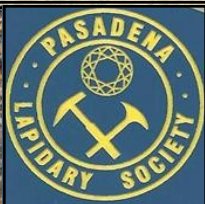
FREE Purple Glass for tumbling & art projects - 2 pounds per person. Linda Nelson (909) 851-4407 Custom bags by Mary Kirmil - Hawaiian, Holiday, Sports, Patriotic & Seasonal totes - mini to jumbo sizes, bandanas, handkerchiefs, hair scrunchies, Perfect gifts for a Rockhound! Mkirmil at yahoo.com or at www.etsy.com/maliakei bags (626) 486-2012 Mortgage and reverse mortgage evaluation and consulting - free for PLS members and friends - Bruce Lamarche (626) 201-8710 Jewelry Classes - see the article about Martha Wilson in the October, 2016, bulletin or read it on-line.

Members are welcome to place a FREE message for items or services wanted, for sale or for trade. Email submissions to: pasadenalapidary at aol.com or by fax to (909) 394-1276.

**NOVEMBER
2016**

The Pasadena Lapidary Society, Inc.
Bulletin Editor:
1475 Paseo Maravilla
San Dimas, CA 91773-3908

**RETURN SERVICE
REQUESTED**



Pasadena, California
U.S.A.
Founded 1946

OUR MISSION

The Pasadena Lapidary Society serves to educate its members and the community in mineralogy, earth sciences and training in the lapidary and jewelry arts – while promoting sound mineral resource stewardship based on environmental awareness and ethical behavior. The Society fulfills its mission year-round which may include field trips, lapidary workshops, outreach presentations, public mineral displays, an annual show, and monthly informational meetings open to the public.



The Pasadena Lapidary Society is a Gold Medal All American Club, affiliated with the California and American Federations of Mineralogical Societies. Our editor is a member of the Special Congress Representing Involved Bulletin Editors.

November 2016

Sun	Mon	Tue	Wed	Thu	Fri	Sat
	31	1 All Saints Day	2 All Souls Day	3 Board Meeting	4 Taurus Meteor Shower	5
 FALL BACK	7	8 VOTE	9	10	11 Veterans Day	12 Oxnard Show
 13	14 Full Moon Super Moon #2	15 Program Meeting	16 Leonids Meteor Shower	17	18	19 Jewel Tunnel Field Trip
20	21	22 Owens Valley Field Trip	23	24 Owens Valley Field Trip	25 BLACK FRIDAY SALE	26
 Advent Light the candles on the windows	28	29	30	1	2	3 Barstow Show