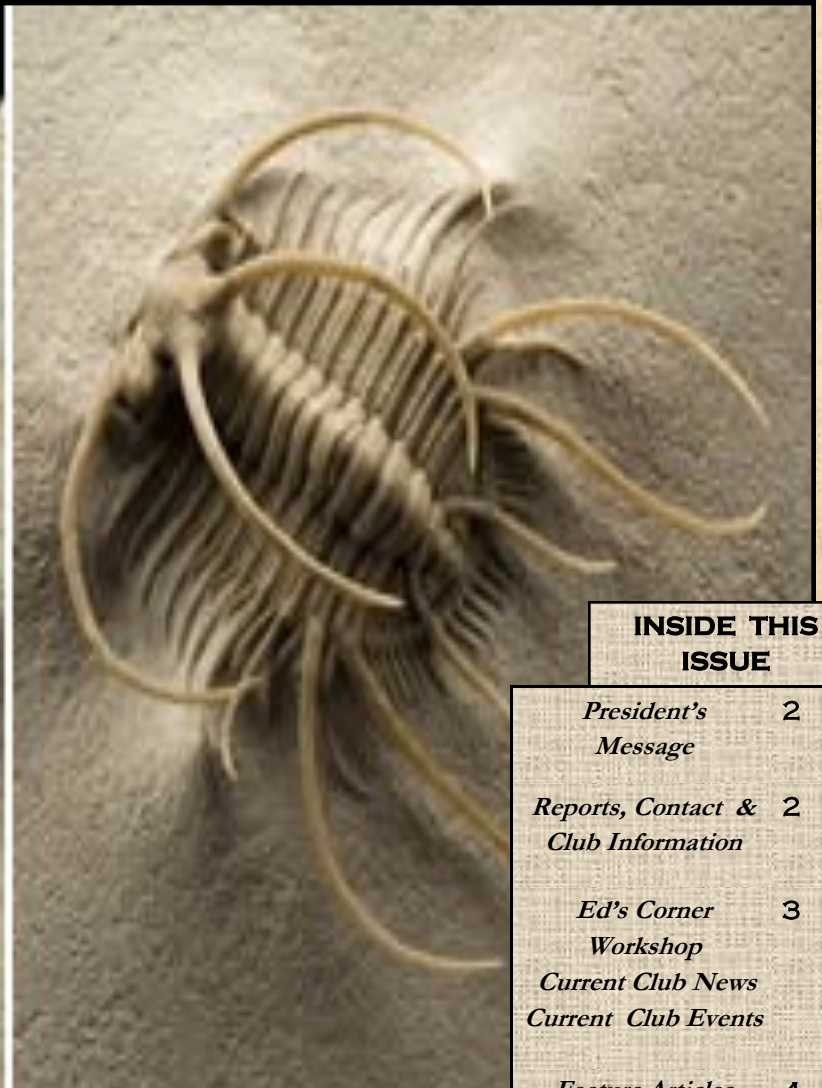


ROCKHOUND RAMBLINGS

FEBRUARY 2016 | THE NEWSLETTER OF THE PASADENA LAPIDARY SOCIETY - PASADENA, CALIFORNIA



INSIDE THIS ISSUE

<i>President's Message</i>	2
<i>Reports, Contact & Club Information</i>	2
<i>Ed's Corner</i>	3
<i>Workshop</i>	
<i>Current Club News</i>	
<i>Current Club Events</i>	
<i>Feature Articles</i>	4
<i>The Age of Trilobites</i>	
<i>Member Finds</i>	
<i>Society Events</i>	5
<i>Articles, Information and Photos</i>	
<i>Field Trip</i>	6
<i>Editor's Quiz</i>	
<i>Federation Reports</i>	
<i>Tips, Safety</i>	7
<i>Rock & Gem Shows</i>	
<i>Member-to-Member</i>	
<i>Calendar</i>	8

Trilobites are found on six continents and some 75 countries. They adapted to their environments in so many ways that scientists are still trying to understand their functions and purposes! Fortunately for us, trilobites' hard bodies made excellent fossils, and thousands have been preserved. From looking at them, we can gain a sense of Earth's amazing diversity – in just a single group of ancient animals!

Images courtesy of Chip Clark, Smithsonian Institution, National Museum of Natural History.

Continued on page 4



President's Message



Dear Members,
January got off to a great start with the program meeting and our new workshop being well attended! Thank you to everyone who helped fix the place up and thank you to Valerie Stathatos for donating the space. Without her generosity, we would be on the street. Let's all show our gratitude to Valerie by respecting her space and her wishes for a safe environment.

Ed Imlay will have his display table set up at this month's meeting. This would be a good

place to show off some of the rocks and minerals collected on the field trip to Quartzsite. We had a good group attending this field trip! Some of our members camped while some chose to stay in motels. Now is the time to begin planning our trip for next year!

Carolyn Duncan, our Ways and Means Committee Chairperson, will have the Meeting raffle set up at the front of the room for everyone's convenience. There will be many more prizes this month with new things collected at Quartzsite. You may purchase your raffle tickets before the meeting begins and at the break. The drawing will be after the break before we

begin our speakers presentations.

There has been a flurry of committee meetings in January as we are getting our year off to a flying start - including the Show committee, Field Trip committee, Operating Regulations committee and our regular Board of Directors meeting.

These are the things that make our club the BEST!

I am looking forward to seeing everyone at the Workshop and at the Membership meetings.

..... *Ellen*

Ellen Ferrell, President

Meeting and General Society Information

Officers

Ellen Ferrell, President
(727) 512-0381
Ellenbf2007 at aol.com

Briana Casay, Vice President
(626) 793-1328
Bria103 at yahoo.com

Cynthia Murphy, Secretary
(626) 579-5323
Hownddogg at att.net

Linda Nelson, CPA, Treasurer
(909) 851-4407
Lnelsn at verizon.net

FAIR USE NOTICE. This publication may contain copyrighted material the use of which has not been specifically authorized by the copyright owner.

We are making such material available in our efforts to advance the educational understanding of the amateur jewelry fabrication and rock collecting hobbies.

We believe this constitutes a 'fair use' of any such copyrighted material as provided for in section 107 of the U.S. Copyright Law.

If you wish to use material from this publication for commercial or purposes of your own that go beyond 'fair use', you must obtain permission from the copyright owner.

Newsletter Articles, ads or corrections should be sent to the editor: **Mark Nelson**, P.O. Box 5025, Pasadena CA 91117-0025 or by email to pasadenalapidary@aol.com. (909) 996-1784.

January Board Meeting by Cynthia Murphy, Secretary

Officers/Directors Present: Ellen Ferrell, Briana Casay, Cynthia Murphy, Linda Nelson, Marcia Goetz, Carolyn Duncan, Ed Imlay, Mark Nelson. Absent: Joe Goetz, Elizabeth Weston, Jennifer Jang.

The directors discussed current items. The report is posted on the Member Tools page of the web site. All members are welcome to attend the board meetings. Let Ellen Ferrell know if you are planning to attend so you can be notified of any change of time or venue.

January Program Meeting

Martha Wilson gave a presentation regarding the roads, eating and lodging facilities and shopping opportunities which would be available in the Quartzsite area.

Chris Kyte displayed examples of various types of rocks from the Quartzsite area and also gave a short presentation regarding these specimens.

Operating Regulations Meeting

The Committee (Carolyn Duncan, Ellen Ferrell, Joe Goetz, Marcia Goetz, Ed Imlay, Chris Kyte, Cynthia Murphy, Mark Nelson and Martha Wilson) met

January 14th at the home of Martha Wilson in Altadena. The next meeting will be held at the same location on February 18, 2016 at 5 P.M.

February Program Meeting

With an eye to the upcoming 2016 PLS Annual Club Show, Marcia Goetz will share useful insights on "Preparing a Winning Display Case".

Come early at 6pm and enjoy coffee and light refreshments by the Refreshments Committee. Bring rocks and minerals for identification! The display table is for members to show items they have collected at recent field trips or in their travels.

Membership Information and Meeting Locations

Membership per calendar year is only \$20, \$15 for a second adult member in the same house. Junior members and the third or more members at the same house are \$10. Initiation fee is \$2.00 per person and membership badges are \$7.50. Renewals are due by the October General Meeting and delinquent after December 31st. Mail checks for membership to P.O. Box 5025, Pasadena CA 91117-0025.

Website:

www.pasadenalapidarysociety.org
Email: pasadenalapidary@aol.com

Board Meetings: 7:00 PM on the first Thursday of the month at the Castellano Building at 401 W. Colorado Blvd Monrovia, CA. A map and directions are on the website. All members are welcome to attend!

Program Meetings: 6:45 - 8:45 PM on the third Tuesday of each month at the Pasadena Central Library at 285 E. Walnut Street. Doors open at 6pm. **Guests are welcome!**

Field Trips are scheduled each month. Refer to the bulletin and website for date, location and info.

Workshop: The use of the club's equipment is available to members from 9am to 5pm on the 2nd Sunday of each month in our shop at 97 E. Montecito Ave., Sierra Madre. There are two sessions - from 9am to 1pm and 1pm to 5pm. Equipment proficiency is required and instruction is free. Fees are \$3 per session or \$5 for a full day. Bring lunch!

Safety: Liability waivers, eye

protection, closed-toe-flat-heel shoes and machinery safe-practices are mandatory for all participants. Workshops are for adult members and junior members 8 and older with adult supervision.



The Annual Club Show is held the second weekend of March at the Masonic Center, 3130 Huntington Drive, San Marino.

Advertising - a business card size ad is available for \$99 per year or \$10 per edition. Submit text, logos, business card or other copy to the editor at the address or email listed on this page.

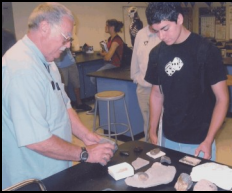


Ed's Corner

EDUCATIONAL OUTEACH

By Ed Imlay

Chair, Education Committee



Ed Imlay at a local school

Our presentations are suitable for schools, social and civic groups, senior citizens centers, religious and youth groups - anyone!

To schedule my special educational presentation to your group or school contact me by phone at (626) 286-8215 or by email: edimlay@hotmail.com.

Identification: Would you like to know the name of a rock you have acquired? If you can polish or knock a small window off of a corner without damaging the rest of the specimen, please do so to expose the inside. Set it on the table at the rear of the meeting room in January with a note asking "What is this?"

Display Table: At the February Program Meeting you may display items of general interest, workshop projects and items you collected on field trips. Celebrate our gemstone of the month - Amethyst - by wearing something made from this remarkable stone, and by displaying something that you have made from it!

*The February-born shall find
Sincerity and peace of mind,
Freedom from passion and from care,
If they an amethyst will wear.*

Source: Gregorian Calendar 1582

WORKSHOP

This Month's Workshop Program: Beginning Metal Etching



The workshop this month will offer a class on metal etching by Jacqueline Cooper.

To participate in the program you will need to bring: From the grocery store: Pyrex glass dish (square or rectangle); 1 quart of 3% hydrogen peroxide; paper towels; baking soda and rubber gloves. From the hardware store: duct tape and a small can of acetone (not fingernail polish remover). You will also need a strip of metal that you can make into a pendant (3" x 3" or 4" x 4") or bracelet (3" x 6") - brass, copper or nickel is recommended. The metal has to fit in the bottom of your glass dish. You will need something to make a design with - a felt tip marker with permanent ink or a rubber stamp using a pad with permanent ink such as Stazon Ink available at Michael's, Hobby Lobby or JoAnn's. Bring metal hand shears to shape your metal. Jacqueline will bring the muriatic acid and cleanser. The class will be during the morning session, from 9:30am to 1pm, with more practice on your own in the afternoon. Most of the machines will be available for other projects.

Park on the street or in the parking lot on the east side of the building and enter through the walkway on the west side. New members who have not been to one of our workshops are asked to please contact me to schedule an orientation at: 909-593-2781 or at [gem.quest at verizon.net](http://gem.quest.verizon.net).

Carolyn Duncan, Workshop Chair

**Welcome
New Members !!**



Welcome to Bruce Lamarche, a specialist in real estate loan financing and his wife, Cynthia, who is looking forward to field trips and leaning lapidary techniques. We welcome their talent!

Share the lapidary and jewelry hobby! Invite your friends and neighbors to one of our monthly meetings to learn more about the Pasadena Lapidary Society!



ROCK OF THE MONTH PRESENTATION

Linda Nelson will talk about one of her favorites - **Amethyst!** We need folks to be scheduled to talk about an interesting rock or mineral in October and November. Please sign up at the monthly meeting or by email at pasadenalapidary@aol.com.



It is our 70th Year! Should we have a party? A dinner? Invite former members, VIP's from the City, CFMS, other clubs? President Ellen Ferrell is seeking our ideas for how to celebrate it! Please give her your input at her contact info on page 2.



Follow us on Twitter!

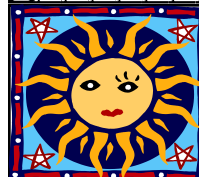
<https://twitter.com/pasalapidary>



Meeting Refreshments:



Program Meeting Refreshments — Thanks to Jacqui Cooper and Victor Castellano for their treats at the January meeting! Linda Nelson and Carolyn Duncan have volunteered to bring refreshments at the **February** meeting! I am taking sign-ups for May through November and seeking someone to work with me to coordinate the volunteers. **To volunteer to bring light refreshments or to help me** ∞ Contact me at the information on page 2. **Ellen Ferrell.**



Sunshine:

Christina Fandino won a scholarship to GIA (the Gemological Institute of America)! She starts in mid-February! ∞ Correction: Carolyn Duncan was named Sports Fisherman Of The Year by



Turner's Sporting Goods.

The Pasadena Lapidary Society has a Sunshine Committee to send cards and words of comfort and support and congratulations to our members who are in need or are deserving of it. Call or email me! My contact info is on page 2. Cynthia Murphy.



Continued from page 1

The Age of Trilobites

by Mark Nelson, Pasadena Lapidary Society

Known as the "Cambrian Explosion", the Cambrian Period is the first geological time period of the Paleozoic Era (the "time of ancient life"). This period was marked by a dramatic burst of evolutionary changes in life on Earth. In the early Cambrian (520 million years ago), Earth was generally cold but was gradually warming as the glaciers of the late Proterozoic Eon receded. During this time the single supercontinent Rodinia broke apart which increased coastal area. The glacial retreat created more shallow sea environments where life could take hold.



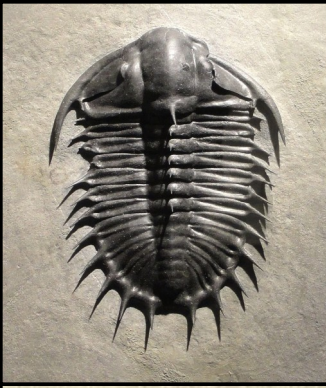
Walliserops trifurcatus (400mya), from Djebel Oufaten, Morocco. Photo by Kevin Walsh - originally posted to Flickr as Trilobite 3

At this point no life yet existed on land. All life was aquatic, and it was in this environment that we see the first trilobites. "What exactly is a trilobite?", you may ask. Distantly related to modern lobsters, scorpions and insects, trilobites were among the earliest arthropods – animals with segmented bodies, jointed legs, and an exoskeleton.

Trilobites had long antennae and flattened bodies with three sections: a head, middle, and tail. But that may have been where their similarities ended and their differences took off. This group of animals evolved some 15,000 species. Trilobites ranged from a few millimeters (less than half an inch) to 58 centimeters (23 inches) long.

The success and disappearance of trilobites illustrate evolution's ups and downs. By learning to crawl or burrow or swim, their first identified fossils are among the fossils of the Atdabanian stage of the Early Cambrian period (521 million years ago). They learned to be both hunters and passive feeders. Trilobites flourished during the Cambrian Period, throughout the lower Paleozoic era, before beginning a drawn-out decline to extinction when, during the Devonian, all trilobite orders except the Proetids died out. Trilobites finally disappeared in the mass extinction at the end of the Permian about 250 million years ago.

The trilobites were among the most successful of all early animals, roaming the oceans for over 270 million years.



An *Olenoides superbus* trilobite, collected from the Upper Marjum Formation, House Range, Millard County, Utah, USA, lived during the late Middle Cambrian, exhibited in the Houston Museum of Natural Science, Houston, Texas, USA.

Sources for this article include the Smithsonian Natural History Museum, Wikipedia and Live Science.

Many people (myself included before researching this article) are unsure of the pronunciation of the word "Trilobite". According to Cambridge Dictionary Online, it is pronounced "try-low-bite", with the long *i* as in *tricycle*.

Found On Field Trips

Rex and Chuie Nishimura have been busy exploring for places for future field trips. To bring in the New Year they went exploring out in the Castle Butte area they came across some pieces of Bloodstone as in the specimen at right.



To break in their new Dodge Ram truck and it's camper shell they joined the Society members in Scaddan Wash in Quartzsite. While wandering outside of the nearby town of Aguila, Arizona they found quite a bit of this colorful Rhyolite (below). I'm sure we'll see some of this material at this month's Program Meeting.



Mining Supplies and Rock Shop
9565 "C" Street, Suite K, Hesperia, CA

Gold panning equipment, dry washers, gold pans, metal detectors, tumblers, rock saws, polishing equipment, lost wax casting, soldering silver and gold jewelry.

We buy and sell gold and silver and carry a nice supply of rocks and minerals, jewelry, findings, tumbled glass and rocks, rock slabs and cabs, silver wire and sheet, beads, and more.

We support lapidary clubs!

88 On-Pitch

Bruce J. Lamarche
Piano Technician-Tuner

(626) 201-8710

BLamarche@Verizon.net



Lapidary Club Special

Tune any piano - in your home or business - for only \$99.



READY, SET, GO - THE ANNUAL SHOW !!

By Marcia Goetz

Mark your calendars for March 11, 12 and 13 because that is when we all get together and put on our Annual Gem and Mineral Show!. This year's theme is Rocks To Riches!! I know we all feel richer when holding a rock, gem or mineral.

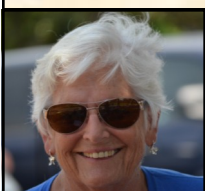
We will be looking for volunteers in several areas and the contacts for those areas are: Set up and Tear down = Mark Nelson; Kitchen = Chris Kyte; Grab Bags, Greeters and Raffle = Carolyn Duncan; Kid's games = Phil Lahr; Silent Auction = Armando Pedroza, and Membership and Club Information = Linda Nelson. Ed Imlay still has Demonstration spaces to fill and would like to hear from you. Jennifer Jang is in charge of organizing the Display Cases. Martha Wilson is collecting projects made at the workshop for a display case and if you have a piece you created contact her. We also encourage you to bring an item for the large club case to display.

Show set up starts at 8 AM on Friday, March 11. March 12th we open at 10 and close at 6, March 13th we open at 10 and close at 5. Friday is our day to get everything ready and your help is much needed. Sunday after 5 PM the reverse of Friday takes place in a much shorter space of time and the more hands we have available the faster it goes.

You Can Display At The Show!

You were attracted by the fine display of minerals and jewelry the first time you attended the club's annual show! These display cases are lighted, locked and brought out of storage each year for our members to use at the show. Do you know that these are available to you, on a first-come basis, at no cost? Display your interesting finds or creations! Call or email Jennifer Jang (jennijae at yahoo.com) to reserve your case.

Committee Chair Corrections



Carolyn Duncan:
Workshop and Ways & Means (meeting raffle and fund-raising) Committees



Cynthia Murphy:
Society Secretary and Sunshine Committee



Hospitality:
(meeting refreshments coordinator) Until there is another member to help, President Ellen Ferrell will schedule the meeting refreshments.

Raffle Donations

We need donations of nice jewelry or lapidary creations for the Raffle. The items should be something that you would like to win in exchange for buying \$5 worth of raffle tickets! The Society has obtained a \$200 metal detector, a silver and rhodonite pendant, an amethyst cathedral, a crystal cluster and such costly items. We need a selection of smaller items. Rings, crystals, rock specimens, fossils, nice rock books, antique jewelry - that kind of thing. Call Carolyn Duncan and she will arrange to have your donation picked up, or bring it to the program meeting or workshop. Items donated qualify as a charitable tax deduction on your tax return.

Raffle Tickets

We are coming down to the wire for selling raffle tickets! This is **make-or-break** for our programs and services to our members and the public for 2016 and we depend upon your generosity and ability to sell tickets to your family and friends. If you have not already bought or sold your tickets, or would like to buy some - please send a check (\$5 for each 6 tickets) made out to Pasadena Lapidary Society to the club Treasurer at the address on page 8 of this bulletin. Linda will put your name on the ticket stubs and send you back the portion that does not go into the drawing barrel.

Silent Auction

Every half hour there will be a Silent Auction with an interesting variety of nice and unusual items and stones. If you have something to donate please bring it to the meeting or workshop or call or email the Editor (see page 2) and Mark will arrange for someone to pick them up from you. Items could include old rock hammers, geodes, petrified wood, slabs, neat colored rocks, fossils, marbles, videos, lapidary supplies, simulated gems, cactus or other plants, paintings, framed photos, "third hands", findings, cabochons, spheres, drinking mugs, collector plates, collector postage stamps and coins, new pens or pencil sets, time-share vacations, cell phone or computer peripherals, new cookware, frequent flyer miles, torches, jewelry, magnifiers, small tools, sports memorabilia, camping equipment, hiking sticks, cool hats, clothing, beads, crystals, and other items. If you buy things to donate we don't expect that the cost you pay for the items to be more than \$1 - \$10. If you know the value, state it so we can put a minimum value on the auction. If you can identify the item (ie: rock or plant) you are donating, please let us know what it is, so we can list it that way on the auction bid form.

The raffle, auction and games at the show raise money for the Club's non-profit educational goals. Items donated qualify as a charitable tax deduction on your tax return. Please bring your family and friends - and children are always welcome!



DELTA ONE LAPIDARY Serving Lapidary Interests

Carrying quality machines by Covington, Graves, Inland, Grobet and Poly-Metric.
Gemstone & Jewelry Supplies & Tools.

DELTA ONE
LAPIDARY

We offer great prices and the best technical assistance in the lapidary industry.



On-Line Catalog: www.deltaonelapidary.com. Don't see what you are looking for? Looking for technical or project advice? We sell quality materials, but we give our experience away freely! Call Jerry Hughes or Juli Dahl at (541) 563-7495 or email your question to Jerry@deltaonelapidary.com.



Call (541) 961-6340 for orders from 9:00AM to 9:00 PM Pacific Time.

Decades of experience! Free Tech Support!



Office: (909) 444-2727
Cell: (909) 455-6800
email@forestandsun.com

Armando Pedroza
Pasadena Lapidary Society
www.forestandsun.com

Full Tree Services, Property Maintenance, Landscape Design and Installation, Hardscape Services, Petrified wood features, Retaining Walls, Driveways, Water Features, Outdoor Kitchens - and more! References and photos.



FIELD TRIPS

By Joe Goetz



Tecopa Trilobites, Minerals & More !

February 20th, 2016



Joe Goetz
Field Trip Chairman

This can be a one day or a weekend adventure. It is 168 miles from Pasadena to Baker, on I-15 toward Las Vegas, and takes about 2.75 hours on a Saturday morning. Participants will meet at the Denny's in Baker at 9:00 AM, then head north on Hwy 127 to the first site.

There will be a potluck on Saturday night for those staying at the group camp. The trilobite collecting site is adjacent to a paved highway but, for driving in Sperry Wash, high-clearance is necessary (the unpaved roads are probably fine for normal cars as far as the talc mines). Lunch break at the China Ranch Date Farm is planned, and there is a restroom there; otherwise there are no facilities. Bring the usual provisions, rock pick, spray bottle, hat, sunscreen, sunglasses, snacks and plenty of water; firewood too if staying the night. We will be walking at Sperry Wash and good shoes are recommended. Agate is found at Sperry Wash, but the area is best known for "petrified bog" with permineralized palm and other woods, and grasses from 1 or 2 million years ago.

Please call me at 626-914-5030 to let me know that you will be attending. The trip leader, Robert Burson of the Searchers will scout the area the week before to make sure it is safe to collect in. Watch the Calendar page of the web site for more details as they become available.



Congratulations to Mona Ross. Mona was the first to respond that one of CFMS President John Martin's goals is to provide for more visibility of local club activities!



There were no correct responses to our Juniors question.

Prizes were awarded at the January Program Meeting!



Editor's Quiz

Juniors: What brand of ink is most suitable for use with metal etching stamp pads?

Adults: Which were the last species of Trilobite to survive, and what caused their extinction?

The answers to this month's quiz can be found in this bulletin. The first Adult and Junior Members to correctly answer these questions will win a special prize at the next Program Meeting. Email your answer to the Society's email address: pasadenalapidary@aol.com.

FEDERATION NEWS

By Joe Goetz

CFMS - California Federation of Mineralogical Societies



Nancy Bird
CFMS Rockhound
Of The Year
Committee Chair

Pasadena Lapidary Society members named CFMS and AFMS Rockhounds Of The Year!

We are pleased to report that the California Federation has recognized the nomination of **Philip Lahr** as our 2016 Rockhound Of The Year! In the regular column by CFMS ROTY Chair, Nancy Bird, Philip was cited for sharing his talents, time and service enhancing the club, for his dedication to the Kids Area at our annual shows and for his care and instruction of our workshop saws and equipment.

We are also pleased that **Jared Nishimura** was recognized by the CFMS as our 2016 Junior Rockhound Of The Year! His attendance at the general meetings and field trips was cited, as was his polishing techniques and for teaching the use of the Genie machine to new junior members. He has presented at the monthly program meeting and is expected to continue his work as a valued part of the Kids Activities venue at our annual show!

The full text of the CFMS article can be read at the CFMS web site or by following this link:
www.cfmsinc.org/newsletter/news2016/002newsFeb16.pdf

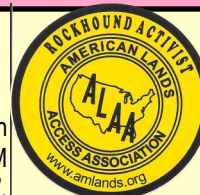
Coincidentally, the American Federation also recognized Philip and Jared in their February newsletter in the column on page 6 by Evelyn Cataldo, the AFMS's ROTY Chair.

AFMS - American Federation of Mineralogical Societies



Dugway Geode Beds Threatened With Closing by BLM

In December PLS members joined with others across the country in writing to urge the BLM to renew the mining claim of "The Bug House". Members sent emails to the officials responsible and we are waiting for a report from the ALAA as to the current status.



SO YOU THINK YOU KNOW EVERYTHING

Glass takes one million years to decompose, which means it never wears out and can be recycled an infinite amount of times!

Gold is the only metal that doesn't rust, even if it's buried in the ground for thousands of years.

Your tongue is the only muscle in your body that is attached at only one end.

If you stop getting thirsty, you need to drink more water. When a human body is dehydrated, its thirst mechanism shuts off.

Zero is the only number that can't be represented by Roman numerals.

Kites were used in the U.S. Civil War to deliver letters and newspapers.

The song, Auld Lang Syne, is sung at the stroke of midnight in almost every English-speaking country in the world to bring in the new year.

Drinking water after eating reduces the acid in your mouth by 61%.

Peanut oil is used for cooking in submarines because it doesn't smoke unless it's heated above 450F.



Kingsley North, Inc.

P.O. Box 216 • 910 Brown Street
Norway, MI 49870-0216

Your Complete Lapidary and Jewelry Supply House

FREE Catalogs

Phone: 800-338-9280

Web site: www.kingsleynorth.com

Email: sales@kingsleynorth.com

Fax: 906-563-7143

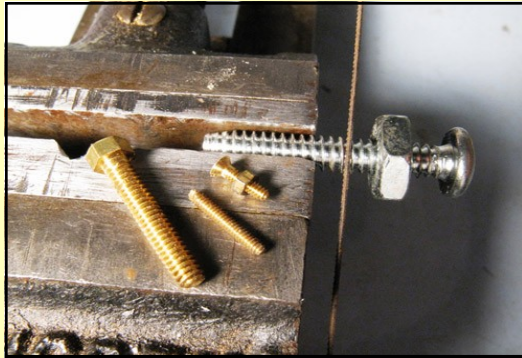




TIPS, HINTS AND SAFETY

Bolt Cutting Made Easy
Bench Tips By Brad Smith

Whenever you have to cut a threaded bolt shorter, it's often difficult to get the nut to thread back onto it. And the smaller the bolt, the more difficult it is to restore any distorted threads. The problem is easily solved with the use of a nut. Here's how I do it. First, screw a nut onto the bolt before cutting it. Grip the bolt by the threaded section that is to be sawed off. Then saw the bolt to the desired length, taper the end with sandpaper or file, and unscrew the nut from the bolt. Unscrewing the nut over the freshly cut end of the bolt will straighten out any damage that sawing and filing did to the threads. Gripping the bolt by the piece to be sawed off localizes any crushing damage to the piece that will be thrown away.



Save used postage stamps for the CFMS!



Why throw these mini works of art away? Former CFMS President Dick Pankey leads the Federation's effort to help fund the cure for cancer through the donation of used postage stamp for international collectors. At last year's CFMS Directors Meeting, Marcia Goetz was able to represent our Society in presenting a large bag of stamps. Was yours among them? Cut about 1/2" around each stamp and put them in a zip-lock baggie. Give them to President Ellen Ferrell at any Society function!

Articles and photographs printed in this bulletin are as credited to their author. Items not so credited are written by the Editor and are not an expression of the Pasadena Lapidary Society. Photographs not credited are from the public domain or from the Editor and are used for educational purposes. Articles and photographs submitted for publication are welcome and must be received by the 15th of the prior month. The Editor reserves the right to edit any article submitted for publishing.

Carpet City

Carpet ∞ Tile ∞ Hardwood ∞ Laminate

Basem Jibrin, Member
Pasadena Lapidary Society

(909) 392-2200

Special Financing Available.

Discounts to members of the Pasadena Lapidary Society!

Free Estimates!

LOCAL ROCK AND GEM SHOWS

February 12 - 21 INDIO: Annual show; San Gorgonio Mineral & Gem Society, and the Shadow Mountain Gem & Mineral Society. Riverside County Fairgrounds & National Date Festival; Gem & Mineral Building, 82-503 Hwy 111; Daily 10 am-10 pm; Adults \$9.00, Seniors \$8.00, Students \$7.00, Children 5 & under free; 16 dealers, displays and demonstrations. Free polished rocks for the children. Lots of fun for adults & children alike.

Look for the gem shows symbol in the calendar on page 8.



26 - 28 COSTA MESA: Wholesale and retail show; Gem Faire Inc, OC Fair & Event Center; 88 Fair Dr; Fri. 12-6, Sat. 10-6, Sun. 10-5; \$7 Admission, Children under 11 Free; Fine jewelry, precious & semi-precious gemstones, millions of beads, crystals, gold & silver, minerals & much more at manufacturer's prices. Free hourly door prizes. http://www.gemfaire.com

Please plan to attend one of the lapidary club shows listed on this page, and wear your club badge, shirt or vest when you do! - Editor

26 - 28 LOS ANGELES: Los Angeles International Gem & Jewelry Show. Hyatt Regency Century Plaza. Loose Gems, Gold, Silver, Watches, Rings, Necklaces, Earrings etc. Admission \$8.00 http://10times.com/gem-jewelry-losangeles

Local Bead Shop Now Open! Christina Rizzo, Graduate Gemologist and 18-year employee of the San Gabriel Bead Company has opened her own bead store! A Place To Bead, 2566 Mission Street, San Marino, 626-219-6633.

Mining Supplies and Rock Shop : See Ad on page 4!



Member - To - Member

For your AVON needs - Contact Elizabeth Weston at 213-308-5558 or mstom8o at gmail.com Used Computer wanted, basic functions and email. Briana Casay 626 -394-4665. Custom bags by Mary Kirmil - Hawaiian, Holiday, Sports, Patriotic & Seasonal totes - mini to jumbo sizes, bandanas, handkerchiefs, hair scrunchies, Perfect gifts for a Rockhound! Mkirmil at yahoo.com or at www.etsy.com/maliakei bags Thank You to the person who put the blue/white crystal beaded loop earrings in the blind gift exchange at the Holiday Party. They are great! — Linda Nelson.

Members are welcome to place a FREE message for items or services wanted, for sale or for trade. Email submissions to: pasadenalapidary at aol.com or by fax to (909) 394-1276.



The single source supplier for jewelers and gemologists.

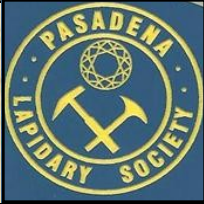
319 W. 6th St., Los Angeles, CA 90014 (213) 627-8004
Monday-Friday: 9 a.m. - 5:30 p.m. Saturday: 9a.m. - 4:00 p.m.

Supplies, displays, boxes, jewelry tools, precious metal, findings, fine jewelry, stones, settings and wedding bands. A wide variety of lighting, photography boxes, inventory software and product labeling supplies. Metalsmithing and lapidary supplies. Free catalog! www.aajewelry.com. Jewelry and Lapidary clubs are welcome!

**FEBRUARY
2016**

The Pasadena Lapidary Society, Inc.
Bulletin Editor:
1475 Paseo Maravilla
San Dimas, CA 91773-3908

**RETURN SERVICE
REQUESTED**



Pasadena, California
U.S.A.
Founded 1946

OUR MISSION

The Pasadena Lapidary Society serves to educate its members and the community in mineralogy, earth sciences and training in the lapidary and jewelry arts – while promoting sound mineral resource stewardship based on environmental awareness and ethical behavior. The Society fulfills its mission year-round which may include field trips, lapidary workshops, outreach presentations, public mineral displays, an annual show, and monthly informational meetings open to the public.



The Pasadena Lapidary Society is affiliated with the California and American Federations of Mineralogical Societies. Our editor is a member of the Special Congress Representing Involved Bulletin Editors.

February 2016

Sun	Mon	Tue	Wed	Thu	Fri	Sat
	1	 Groundhog Day	3	4  Board Meeting	5	6  Ronald Reagan born Feb. 6 1911
7	 CHINESE NEW YEAR	9	10	11	12  Abraham Lincoln born Feb. 12 1809	13
14  Workshop	 President's Day Holiday	15  Program Meeting	17  ASH WEDNESDAY	18	19	20   Tecopa Area Field Trip
21 	22  Full Moon	23  Japan attacks Santa Barbara - February 23, 1942	24	25		27 
28 	29			 Golden Gate Bridge Construction starts 1933		