

ROCKHOUND RAMBLINGS

JANUARY, 2015

THE NEWSLETTER OF THE PASADENA LAPIDARY SOCIETY - PASADENA, CALIFORNIA



INSIDE THIS ISSUE

<i>President's Message</i>	2
<i>Club News, Contact & Club Information</i>	2
<i>Ed's Corner</i>	3
<i>Workshop</i>	
<i>Current Club News</i>	
<i>Current Club Events</i>	
<i>Feature Article</i>	4
<i>This month's shows at Quartzsite, AZ</i>	
<i>Recent Events</i>	5
<i>Holiday Party, Field Trip, Workshop</i>	
<i>Field Trip</i>	6
<i>Editor's Quiz</i>	
<i>Federation Reports</i>	
<i>Tips, Safety</i>	7
<i>Rock & Gem Shows</i>	
<i>Member-to-Member</i>	
<i>Calendar</i>	8

The Quartzsite Gem Shows are the subject of this month's fieldtrip. Since we have such a significant increase in our membership this past year, and that many of our members have never been to the Quartzsite shows, we will attempt to explain the experience in this month's bulletin! Quartzsite, Arizona, is located on Interstate 10 - a 20 minute drive west of Blythe, California. During the heat of the summer there are about 3,500 people in the general area of Quartzsite. Between November 1st and March 1st this number grows to more than 350,000 people. Many come from the snow lands to the fair climate of southern Arizona. Others come for the rocks, gems and minerals! Learn about it in this month's bulletin!



President's Message



Dear Members,
We had a great Holiday party this year! The different location worked out well and we filled the room, not just with people but with much cheer to see our club friends.

Chris & Marlene Kyte received their Rockhound of the Year plaque and Jennifer Nishimura received the

Jr. Rockhound of the Year plaque -- congratulations to the three of you!!

Our December workshop was fun. Martha demonstrated some Christmas tree earrings which required using a tiny hammer and a metal block. Carolyn showed us how to make a wire-wrap ring in the afternoon session. You would have thought we were at Santa's workshop with the elves working on their surprise gifts.

Thanks go to Mark, Carolyn, Valerie S and Davis who are still hunting down the roof leak and I am sure they will succeed soon. Rex spent a lot of time working one of the big saws and is learning a lot about it. Thanks Rex for your efforts to fix it!

Some of us are looking forward to Quartzite and others to our program meeting on January 20, 2015. See you there!

..... *Marcia*

Marcia Goetz, President

Meeting and General Club Information

Officers

Marcia Goetz, President
(626) 914-5030
joenmar1@verizon.net

Martha Wilson, Vice President
(626) 798-9085
marthaansley@gmail.com

Linda Nelson, CPA
Secretary/Treasurer
(909) 592-1322
(909) 394-1276 Fax
lnelsn@verizon.net

FAIR USE NOTICE. This publication may contain copyrighted material the use of which has not been specifically authorized by the copyright owner.

We are making such material available in our efforts to advance the educational understanding of the amateur jewelry fabrication and rock collecting hobbies.

We believe this constitutes a 'fair use' of any such copyrighted material as provided for in section 107 of the U.S. Copyright Law.

If you wish to use material from this publication for commercial or purposes of your own that go beyond 'fair use', you must obtain permission from the copyright owner.

Newsletter Articles, ads or corrections should be sent to the editor: **Mark Nelson**, 1475 Paseo Maravilla, San Dimas, CA, 91773. (909) 996-1784 or by email to mnelsonair@aol.com

December Board Meeting
by Linda Nelson, Secretary

In consideration of the holidays the December board meeting was cancelled.

On January 31st we will host a multi-club field trip planning meeting at the home of Mark and Linda Nelson. All club members are invited to attend or to send in your suggestions of where you would like to go in 2015, and if you would help lead the trip. The meeting starts at 10am. See your membership roster for their address.

December Annual Meeting

Thanks to all who pitched in to help make this year's holiday meeting so much fun and enjoyable!

January Program Meeting

Mark and Linda Nelson recently returned from Italy. One of the places they visited was the famous marble mines of Cararra. At this month's meeting they will show photos of the Cave di Marmo marble mine in the Fantiscritti section of these famous mountains. They will show videos showing

the mining operation that produced such works as Michelangelo carved, and detail how this renown stone is mined and transported to the United States.

All of the presentation will be in English (not Italian) and some will be captioned for the hearing-impaired.

Please join us for the program, Society news, refreshments and a raffle which will include some Cararra marble!

Membership Information and Meeting Locations

Membership per calendar year is \$20, \$15 for a second adult member in the same house. Junior members and the third or more members at the same house are \$10. Initiation fee is \$2.00 per person and membership badges are \$7.50. Renewals are due by the October General Meeting and delinquent after December 31st. Mail checks for membership to P.O. Box 5025, Pasadena CA 91117-0025.

Website: pasadenalapidarysociety.org

Email: pasadenalapidary@aol.com

Program Meetings: 6:45 - 8:45 PM on the third Tuesday of each month at the Pasadena Central Library at 285 E. Walnut Street. **Guests are welcome!**

Field Trips are scheduled each month. Refer to the bulletin and website for date, location and info.

Workshop: The use of the club's equipment is available to members from 9am to 5pm on the 2nd Sunday of each month in our shop at 123 E. Montecito Ave., Sierra Madre. There are two sessions - from 9am to 1pm and 1pm to 5pm. Equipment proficiency is required and instruction is free. Fees are \$3 per session or \$5 for a full day. Bring lunch!

Safety: Liability waivers, eye protection, closed-toe-flat-heel shoes and machinery safe-practices are mandatory for all participants. Workshops and field trips are for adult members and juniors with adult supervision.



The Annual Club Show is held the second weekend of March at the Masonic Center, 3130 Huntington Drive, San Marino.

Advertising - a business card size ad is available for \$99 per year or \$10 per edition. Submit text, logos, business card or other copy to the editor at the address or email listed on this page.

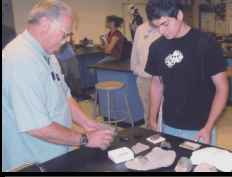


Ed's Corner

EDUCATIONAL OUTEACH

By Ed Imlay

Chair, Education Committee



Ed Imlay at a local school

Jennifer Nishimura will be helping me with presentations to youth groups! To schedule my educational presentation to your group or school contact me by phone at (626) 286-8215 or by email at edimlay@hotmail.com.

Identification: Would you like to know the name of a rock you have acquired? Set it on the table at the rear of the meeting room with a note asking "What is this?" If the interior of the stone is not evident, chip a small piece off or "window" it to reveal the interior (if it will not damage the appearance of the specimen).

Display Table: For the January meeting, please display any items of general interest, especially: workshop projects and items found on field trips. Bring some of the tourmalines you found at the December field trip, or of January's birthstone - Garnet. For fun, wear something to this meeting containing this month's birthstone!

By her who in this month (January) is born
No gem save garnets should be worn;
They will ensure her constancy,
True friendship, and fidelity.

Source: Gregorian Calendar

Welcome New Members !!



Welcome to Nick Taminich, the husband of Gloria Biesterfeld, Tom Traeger's wife Daphne and their children Eric, Jasper and Lauren! Share the lapidary and jewelry hobby! Invite your friends and neighbors to one of our monthly meetings to learn more about the Pasadena Lapidary Society!



ROCK OF THE MONTH PRESENTATION

Jennifer Nishimura will talk about one of her favorite rocks: Chrysanthemum Stones. To be scheduled to talk about an interesting rock or mineral please sign up at the monthly meeting or email Martha Wilson.

Meeting Refreshments: Meeting Refreshments — Chuei Nishimura and Joan Harrison are scheduled for January's refreshments! To volunteer to bring refreshments in February 2015 Contact me at (323) 664-9598 or by email at mikekrose@roadrunner.com. Trudy Krose

WORKSHOP

This Month's Workshop Program:



Everyone had a good time at last month's workshop, and learned some useful skills. To give you time to practice and develop your techniques we will not have any new classes this month. I'll assist members with projects previously started or if you missed a class I can help you catch up. Hope to see you all in 2015! Carolyn Duncan

Howard Lu says the wire projects are therapeutic, both physically and mentally.



Martha Wilson was patient with so many new students of differing levels of experience.



Find us on Facebook Like

"There are people in the world so hungry, that God cannot appear to them except in the form of bread." — Mahatma Gandhi Thank you to all who donated to the food drive! The Friends In Deed were very happy to get the food and toiletries we donated. — Linda Nelson

Do you extend your social and professional network by using Twitter? Look at what Elizabeth Weston has done for our Twitter account! https://twitter.com/pasalapidary

Sunshine: Ray Ritchie continues to recover from heart surgery. He was looking good at the Holiday party! Sheryl Aitken starts her regimen of chemotherapy treatment for leukemia this month. We are saddened by the passing of Rex Nishimura's father, Henry.

Do you know anyone who is not feeling up to par, has been sick or lost a loved one? On the silver lining side of things, do you know who has achieved a goal, won a personal victory, or done something that deserves recognition? The Pasadena Lapidary Society has a Sunshine Committee to send cards and words of comfort and support and congratulations to those members who are in need or are deserving of it. Notify Trudy Krose at 323-664-9598 or by email at mikekrose@roadrunner.com.



The Beading Group will have some great projects for the upcoming year. Kathleen and Lisa Griffy, Jacci Cooper and Corinne Imlay will show us how to integrate beading and lapidary. Call Corinne Imlay at (626) 286-8215 for questions or suggestions of what you would like to see highlighted.



2015 Quartzsite Shows

A perspective by Mark Nelson, Pasadena Lapidary Society

At the risk of sounding dramatic, a visit to the Quartzsite Shows should be on every rock and gem enthusiast's "bucket list". You can't accurately compare it with any other show you've been to. It's a small desert gas stop that is transformed almost overnight! People come from all over the world with 55 gallon drums of amethysts, jaspers, fossils, and many other lapidary items. Also available are Moroccan fossils, swap meet items, tools, camping and RV's and their parts and supplies, LED lights and bulbs, custom signs, crafts, lapidary equipment (new and used), food, drink, entertainment with swap meets. You've got to go. Look for tips on our web site:

www.pasadenalapidarysociety.org.

The Main Event: The Main Event has had an annual show here since Quartzsite's shows began in the early 1980's. A beautiful food court with a stage for daily entertainment and a fun environment. The beer garden should be up and running for the 2015 Show. Some rocks, gems and minerals. Mostly known now for imported goods and antiques. On the west side of the Main Event are two wholesale tool buildings, similar to Harbor Freight.

Main Street Traders Swap Meet: Shops on Main Street open all year round. Variety of vendors with collectibles, jewelry, beads & supplies, rocks, new items and food court. 9 am to 5 am daily. Location: 1170 Main Street across from the Pilot and McDonalds.

Hi Ali Swap Meet: Lots of antiques and collectibles and "good junk" to dig through. Also some rocks and new items like palm leaf hats.

Prospectors Panorama: Lots of Gems & Minerals, Jewelry & More plus a Beer Garden and Food. Highlights include the best prices on small pieces of amethyst, fossils from Morocco, wholesale rocks at the El Paso Rock Company.

Desert Gardens: Mostly collectors-to-collectors. All kinds of gems, minerals and fossils. Wholesale prices on rough rocks.

Rice Ranch Y'All Come Show: New items and collectibles with food vendors.

Tyson Wells: Probably the most varied of all the shows. Many vendors and a huge variety of items, including tools, RV supplies, gems, jewelry, crafts, beads & supplies and more.

QIA Pow Wow Rock & Mineral Show: Mostly items from other collectors and artisans. All gems and minerals including supplies and items made from them. Be sure to visit the Abalone King and Dyer Wyer!

Big Tent Sports, Vacation & RV Show: Recreational vehicles and accessories.

Greasewood Swap Meet: Folks coming in to sell out of the back of their cars, along with craftsmen making signs and other items. Some good bargains to be had!

Quartzsite Show Dates: There are shows by different names all over town through February. Here are some of the highlights:
Oct. 31, 2014 - February 28, 2015 Quartzsite Market Place Street Fair
October 31, 2014 - March 1, 2015 Quartzsite Sports, Vacation & RV Show

November 1, 2014 - April 1, 2015 Variety of shows at Tyson Wells

Nov. 01, 2014 - February 28, 2015 Hi Ali Swapmeet

January 02 - January 14, 2015 Prospectors Panorama

January 01 - February 28, 2015 Desert Gardens -Gem & Mineral

January 02 - January 11, 2015 Tyson Wells Rock & Gem Show

January 05 - January 25, 2015 Main Event (to be confirmed)

January 16 - January 25, 2015 Tyson Wells Sell-A-Rama

January 17 - January 25, 2015 Big Tent Sports, Vacation & RV Show

January 21 - January 25, 2015 Pow Wow - Gems, minerals & jewelry

January 30 - February 8, 2015 Tyson Wells Arts and Crafts

February 06 - February 07, 2015 Quartzsite Quilt Show - Quartzsite Senior Center

February 13 - February 15, 2015 Quartzsite Gold Show

January 17-25, 2015 Rice Ranch Y'all Come Show

Camping: There is an entire desert of our land (BLM) in which to camp. See the field trip article and the web site for specifics.

Lodging: Motel space is available 20 minutes away in Blythe, CA. One way to book is at www.booking.com. Here are some we have experience with:

- Motel 6 - \$76 - 500 W Donlon St Blythe (760) 904-6990
- Super 8 - \$76 550 W Donlon St, Blythe (760) 922-8881
- Willow Inn - \$49 - 900 West Rice Street, Blythe (760) 922-9191
- Dutt Relax Inn - \$45 - 1843 E Hobsonway (760) 922-0273

Ask for Senior and AAA Rates if you qualify - usually 10% less.

Dobell Ranch Petrified Wood Holbrook, Arizona

Great selection and prices on petrified wood! Open daily!

AZ-77 south from the center of Holbrook. At the intersection of US 180, turn left for 12.6 miles. Turn left at a white

sign for the historic visitors museum with a drawing of a female deer and a bell (Doe-Bell). Drive the old paved highway lined with petrified wood until it ends at the Dobell Ranch. Ask for Gordon Dobell or Tonya Black! Fill a 5-gallon bucket with petrified wood or select larger pieces for your own museum! A great weekend trip!

Show this page or a copy for a Special Rock Club Discount!



Tonya Black

88 On-Pitch

Bruce J. Lamarche
Piano Technician-Tuner

(626) 201-8710

BLamarche@Verizon.net

Lapidary Club Special

Tune any piano - in your home or business - for only \$99.

2014 Holiday Party

Veteran members say it was one of the very best!



Our Junior Members were the life of the party! L-R Top: Alyson Nishimura, Danielle Sanchez, Scott Lahr. Seated: Jennifer and Daniel Nishimura, Jared Nishimura and Paolo Sanchez.



Daniel "Rocky" Nishimura and Jasper Traeger



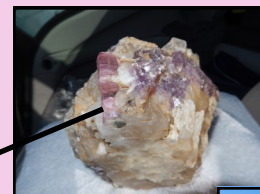
We were pleased to meet Daphne Traeger (holding Jasper), son Eric on top and Lauren in yellow. They all joined the Society that night!

Have you seen the Society's Facebook page recently? Elizabeth Weston has been busy putting our activities on line!
www.facebook.com/pasadenalapidarysociety
 Be sure to "like" it and share it with your friends!

Himalaya Tourmaline Mine Field Trip

December 13th, 2014

Twenty two members and guests braved the chance of rain and muddy conditions for a chance to find some pegmatite minerals at the famed Himalaya Mine. Everyone found something to bring back! Rimas Victora, below, shows off his huge piece of pegmatite with tourmaline and lepidolite!



Tao Kuo



Sharon Rincon



Valerie Wong has a good sifting technique.



Dimitri Lin was proud of his finds!



Elizabeth Weston



Jennifer Jang

Sheryl Aitken took these photos of Mark Nelson's pink tourmaline with a penny for size reference.



Jim Gersbach holds a nice piece!

After sifting and washing the mine tailings the ground got pretty muddy, but everyone agreed that the effort was worth it!



DELTA ONE LAPIDARY
 Serving Lapidary Interests

Carrying quality machines by Covington, Graves, Inland, Grobet and Poly-Metric.
 Gemstone & Jewelry Supplies & Tools.

We offer great prices and the best technical assistance in the lapidary industry.



On-Line Catalog: www.deltaonelapidary.com. Don't see what you are looking for? Looking for technical or project advice? We sell quality materials, but we give our experience away freely! Call Jerry Hughes or Juli Dahl at (541) 563-7495 or email your question to Jerry@deltaonelapidary.com. Call (541) 961-6340 for orders from 9:00AM to 9:00 PM Pacific Time.
 Decades of experience! Free Tech Support!



Armando Pedroza
 Owner

Office: (909) 444-2727

Cell: (909) 455-6800

Fax: (909) 444-2121

St. Lic. # C27 893193

email: email@forestandsun.com
 website: www.ForestandSun.com



FIELD TRIPS

By Joe Goetz



Joe Goetz
Field Trip Chairman

It's Quartzsite Time !

January 21 - 25 2015



In January we will visit the extensive and varied shows in Quartzsite, Arizona. Our timing is to take advantage of the annual "Pow Wow", hosted by the Quartzsite Improvement Association, and many of our members will meet there on the 21st in order to have an opportunity to see more of the shows while they are there.

Chris Kyte will lead the field trips Saturday and Sunday. Briefing Saturday at 8:30am, Mountain Time, in front of the Black Rock Cafe (not always open), 46751 U.S. 60, Brenda, AZ in Brenda. Directions (a 15 minute drive) from the Chevron at the NE corner of I-10 and Riggles Avenue in Quartzsite are: Head south on Riggles Ave toward I-10. Turn left onto I-10 E toward Phoenix for 10.7 mi. Take exit 31 for US-60 East and go 3.6 miles to the cafe.

For those that camp there is Scadden Wash and we were invited to join the CFMS folks at the Plomosa Road BLM Camping Area. The choice is yours. The Plomosa Road BLM open camping area is approximately 10 miles north of Quartzsite. Take U.S. Hwy 95 north of Quartzsite to the Plomosa Road turnoff and turn right. The free camping is on the north and south sides of Plomosa Road. See a map on the web site and at the monthly meeting. Of course, if you are planning to stay in a motel in Blythe you should make a reservation immediately!

..SOMEWHERE IN CALIFORNIA.. JOE GOETZ



Congratulations to Alyson Nishimura for researching the PLS field trip to Baxter Wash in February, 2015!

Congratulations, also, to Nadine Ishizu for identifying the "Rockologist" rolling rock shop of PLS co-founder

"Chuckawalla Slim" on the face page of our Facebook account! See it at www.facebook.com/pasadenalapidarysociety



Editor's Quiz

Juniors: This month's full moon has a special name. What is it and why is it called that?

Adults: What is the subject of the December 2014 CFMS newsletter's article about safety? How can we apply it to the activities of our Society?

The answers to this month's quiz can be found on our web site or on the Internet. The first Adult and Junior Members to correctly answer these questions will win a special prize at this month's Program Meeting. Email your answer to pasadenalapidary@aol.com or call the Editor.



Kingsley North, Inc.

P.O. Box 216 • 910 Brown Street
Norway, MI 49870-0216

**Your Complete Lapidary
and Jewelry Supply House**

FREE Catalogs

Phone: 800-338-9280

Web site: www.kingsleynorth.com

Email: sales@kingsleynorth.com

Fax: 906-563-7143



Find us on
Facebook



McAfee
SECURE

FEDERATION NEWS

By Joe Goetz

CFMS - California Federation of Mineralogical Societies



Jim Brace-Thompson

Jim Brace-Thompson is heading the California Federation in it's support of the AFMS Future Rockhounds of America merit badge program. The FRA program offers 20 badges for kids to earn by doing activities spanning the full range of our hobby - from taking field trips and collecting to lapidary work, writing newsletter articles, learning about minerals, fossils, and meteorites, gemstone lore and legend, and more. Any child earning 6 badges symbolically graduates from a "future" rockhound to a full-fledged rockhound and is awarded a Rockhound badge. Since I began the Badge Program 10 years ago, 442 kids have earned that distinction. But there is another award that is far more special and exclusive. Any child earning all 20 badges becomes a Rock Star, earning an AFMS pin and having his/her name featured on a Rock Star Hall of Fame on the AFMS website.

Our Society is interested in creating such a program here! If you are interested in leading or helping to lead this program within our Society, please let us know at pasadenalapidary@aol.com.

AFMS - American Federation of Mineralogical Societies

AFMS Code of Ethics

I will respect both private and public property and will do no collecting on privately owned land without the owner's permission.

I will keep informed on all laws, regulations of rules governing collecting on public lands and will observe them.

I will to the best of my ability, ascertain the boundary lines of property on which I plan to collect.

I will use no firearms or blasting material in collecting areas.

I will cause no willful damage to property of any kind - fences, signs, buildings.

I will leave all gates as found.

I will build fires in designated or safe places only and will be certain they are completely extinguished before leaving the area.

I will discard no burning material - matches, cigarettes, etc.

I will fill all excavation holes which may be dangerous to livestock.

I will not contaminate wells, creeks or other water supply.

I will cause no willful damage to collecting material and will take home only what I can reasonably use.

I will practice conservation and undertake to utilize fully and well the materials I have collected and will recycle my surplus for the pleasure and benefit of others.

I will support the rockhound project H.E.L.P. (Help Eliminate Litter Please) and **Will** leave all collecting areas devoid of litter, regardless of how found.

I will cooperate with field trip leaders and those in designated authority in all collecting areas.

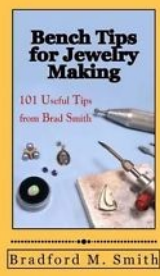
I will report to my club or Federation officers, Bureau of Land management or other authorities, any deposit of petrified wood or other materials on public lands which should be protected for the enjoyment of future generations for public educational and scientific purposes.

I will appreciate and protect our heritage of natural resources.

I will observe the "Golden Rule", will use "Good Outdoor Manners" and will at all times conduct myself in a manner which will add to the stature and Public "image" of rockhounds everywhere.



TIPS, HINTS AND SAFETY



SOLVENT DISPENSER

Bench Tip by Brad Smith

Frequently I need to fill a small bottle with alcohol, like an alcohol lamp or one of the nail polish bottles that I use for the yellow ochre anti-flux. Often I can't find a small funnel and end up spilling almost as much as I get into the bottle. It's wasteful, and the fumes can't be too good for you either.

A neat and inexpensive solution is to use a lab dispensing bottle to store small quantities of the solvents you frequently use. It has a wide mouth for filling and a fine tip for dispensing. You can get a small stream or just a drop or two. With the bottle's fine tip I don't spill a drop.

There are many suppliers on Google. One I've used is Carolina Biological Supply Company at www.carolina.com The bottle is Catalog # 716580 Unitary Wash Bottle, Low-Density Polyethylene, 125 ML at a price of \$5.35.

* Get all 101 of Brad's bench tips in "Bench Tips for Jewelry Making" at Amazon

Thanks to the East Texas Gem & Mineral Society for the article!

Cool and Fun Facts

- You were born with 300 bones. By the time you are an adult you will have only 206!
Some Native Americans used to name their children after the first thing they saw as they left their teepees after their children were born, hence the names Sitting Bull and Running Water.
Coca Cola would be green if a food colorant wasn't added. The version made in Peru is called Inca Cola - and IS green.
"Almost" is the longest word in the English language with all of the letters in alphabetical order.
One in five adults believe that aliens are hiding on our planet disguised as humans.
It is impossible to sneeze with your eyes open.

Thanks to Barnet Resnick, Esquire for these tidbits!

Maliakei Bags and Accessories



Bandanas, Handkerchiefs, Drawstring Bags, Hair Scrunchies, Hawaiian Totes - mini to jumbo sizes, Holiday & Seasonal Totes, Patriotic & Sports Totes - a perfect gift for a Rockhound!



Look for my on-line store at www.etsy.com maliakei bags or email me at pasadenalapidary@aol.com

Mary Kirmil Member, Pasadena Lapidary Society

Articles and photographs printed in this bulletin are as credited to their author. Items not so credited are written by the Editor. Photographs not credited are from the public domain or from the Editor and are used for educational purposes.

LOCAL ROCK AND GEM SHOWS

January 5th to February 28th: QUARTZSITE, AZ

It's not too soon to plan to visit Quartzsite! It is a short 3 hour drive and well worth it. Our Society will hold its January field trip there on January 24th and 25th during the Pow Wow Show (January 21st to 25th). Level primitive camping or RV sites and motels in Blythe, CA. See the web site for more information.

Look for the gem shows symbol in the calendar on page 8.



15-18 Pasadena: Pasadena Bead & Design Show, Hilton Pasadena 168 S. Los Robles Avenue. 300 Artisan Booths, Merchant Displays, Galleries, Workshops. 10am to 6pm daily. Admission \$10, good all four days. Valet or self parking \$6. www.pasadenabeadanddesignshow.com.

Please plan to attend one of the shows and businesses listed on this page, and wear your club badge and vest when you do! - Editor

16-18—DEL MAR, CALIFORNIA: Wholesale and retail show; Gem Faire Inc, Del Mar Fairgrounds; 2260 Jimmy Durante Blvd; Fri. Noon-6pm, Sat. 10am-6pm, Sun. 10am-5pm; \$7, free (ages 0-11); Fine jewelry, precious & semi-precious gemstones, millions of beads, crystals, gold & silver, pearls, minerals & much more at manufacturer's prices. Exhibitors from around the world. Jewelry repair & cleaning while you shop. Free hourly door prizes. Web site: http://www.gemfaire.com

Member - To - Member



WANTED: The loan of Society bulletins, minutes, correspondence, awards, photos, officer and member lists from before October 2009. Any condition. If you have any, bring them to a club function or email the club to arrange a pick up. We are building our Yearbook and need to know more of our history! We'll copy and return them to you.

Does your retired family or church member want a little extra income by renting a guest apartment or casita? Let's help one of our own! Dr. Davis Coghill is seeking to rent a duplex or guest accommodations. Call our editor at 909-996-1784 or email pasadenalapidary@aol.com

Wanted: Used mining ore cart with wheels. Linda Nelson - (909) 851-4407.

Members are welcome to place a FREE message here for items or services wanted, for sale or for trade.

Email submissions to: pasadenalapidary@aol.com or call the Editor.



The single source supplier for jewelers and gemologists.

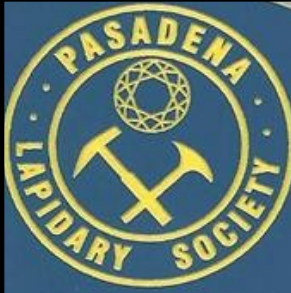
319 W. 6th St., Los Angeles, CA 90014 (213) 627-8004 Monday-Friday: 9 a.m. - 5:30 p.m. Saturday: 9a.m. - 4:00 p.m.

Supplies, displays, boxes, jewelry tools, precious metal, findings, fine jewelry, stones, settings and wedding bands. A wide variety of lighting, photography boxes, inventory software and product labeling supplies. Metalsmithing and lapidary supplies. Free catalog! www.aajewelry.com. Jewelry and Lapidary clubs are welcome!

**JANUARY
2015**

The Pasadena Lapidary Society, Inc.
Bulletin Editor:
1475 Paseo Maravilla
San Dimas, CA 91773-3908

**RETURN SERVICE
REQUESTED**



OUR MISSION

The Pasadena Lapidary Society serves to educate its members and the community in mineralogy, earth sciences and training in the lapidary and jewelry arts – while promoting sound mineral resource stewardship based on environmental awareness and ethical behavior. The Society fulfills its mission year-round which may include field trips, lapidary workshops, outreach presentations, public mineral displays, an annual show, and monthly informational meetings open to the public.



Spessartite Garnets in a gold "Victorian" Setting.



The Pasadena Lapidary Society is affiliated with the California and American Federations of Mineralogical Societies. Our editor is a member of the Special Congress Representing Involved Bulletin Editors.

January 2015

Sun	Mon	Tue	Wed	Thu	Fri	Sat
					2	3
4 Full Wolf Moon	5	6 Epiphany & Nativity 	7 National Old Rock Day 	8	9 1st U.S. Balloon Flight (1793) 	10
11 Wo	12	13 Board Meeting 	14	15 	16 	17 Benjamin Franklin Born 1706 in Boston
18 	19 Dr. Martin Luther King, Jr. Holiday 	20 Program Meeting 	21	22	23	24 Field Trip to Quartzsite, AZ
25 Field Trip to Quartzsite, AZ	26	27 HOLOCAUST Auschwitz Liberated 1945	28 Quartzsite Pow Wow	29 Liliuokalani becomes Queen of Hawaii 1891 	30 Quartzsite Pow Wow	31 2015 Field Trip Planning meeting at the Nelsons. 10am.