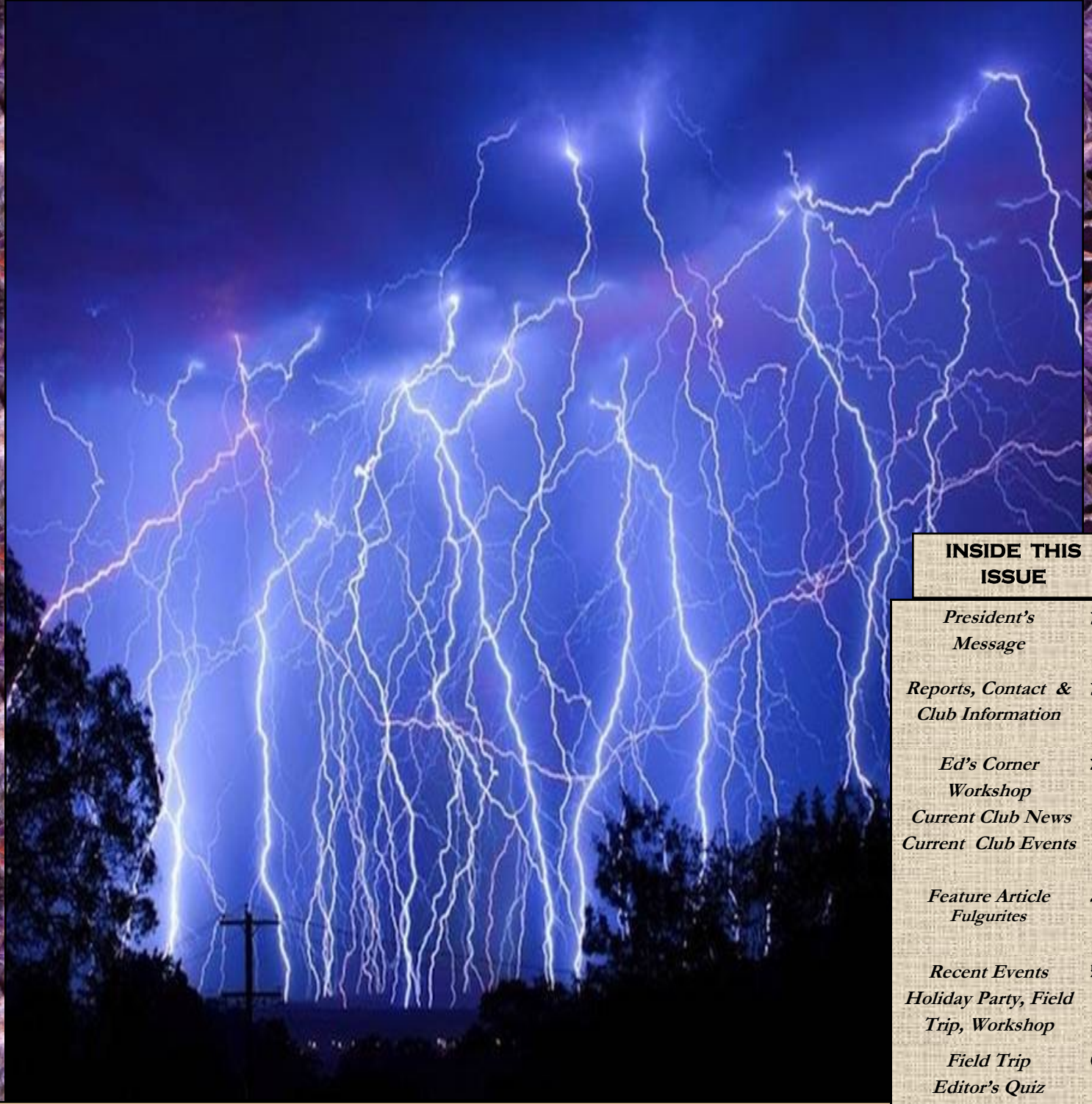


ROCKHOUND RAMBLINGS

FEBRUARY, 2015

THE NEWSLETTER OF THE PASADENA LAPIDARY SOCIETY - PASADENA, CALIFORNIA



INSIDE THIS ISSUE

<i>President's Message</i>	2
<i>Reports, Contact & Club Information</i>	2
<i>Ed's Corner</i>	3
<i>Workshop</i>	
<i>Current Club News</i>	
<i>Current Club Events</i>	
<i>Feature Article</i>	4
<i>Fulgurites</i>	
<i>Recent Events</i>	5
<i>Holiday Party, Field Trip, Workshop</i>	
<i>Field Trip</i>	6
<i>Editor's Quiz</i>	
<i>Federation Reports</i>	
<i>Tips, Safety</i>	7
<i>Rock & Gem Shows</i>	
<i>Member-to-Member</i>	
<i>Calendar</i>	8

Lightning. "Awesome". "Fascinating". "Frightening". The words used to describe one of the most powerful effects of nature on our planet don't do justice to the spectacle of lightning. How is this burst of electrostatic discharge between a cloud and the ground associated with the lapidary hobby? Read about it in this month's feature article on page 4!



President's Message



Dear Members,

I hope those of you who went to Quartzite had a great time. It is an experience and a lot of fun. Chris Kyte was the Field Trip leader for our group and he always finds great rocks!

February and March are times for us to get ready for the 57th Pasadena Lapidary Gem & Mineral Show, which will be here very soon – March 14th and 15th. The

show is always fun and it gives us an opportunity to show the public what we are about and what we do. We are proud of our club's accomplishments and our show expresses that!

I hope you all are saving the dates to come to the show and have fun with other rock hounds. The show theme is "Classical Gems and Minerals" - a theme that gives ease to figuring out what to put in your display case (the case is free to members) whether it be crystals, rough, polished, cabbed, mineral specimens or jewelry.

We will have a raffle again and are requesting a donation, please donate the same quality piece as you would like if you were to win – and you just might win...if you remember to buy a ticket! As the show gets closer we will have more information on how to sign up to put in a case display, be a demonstrator and other ways you can help make the show a great success.

See you at a meeting,

..... **Marcia**

Marcia Goetz, President

Meeting and General Club Information

Officers

Marcia Goetz, President
(626) 914-5030
joenmar1@verizon.net

Martha Wilson, Vice President
(626) 798-9085
marthaansley@gmail.com

Linda Nelson, CPA
Secretary/Treasurer
(909) 592-1322
(909) 394-1276 Fax
lnelson@verizon.net

FAIR USE NOTICE. This publication may contain copyrighted material the use of which has not been specifically authorized by the copyright owner.

We are making such material available in our efforts to advance the educational understanding of the amateur jewelry fabrication and rock collecting hobbies.

We believe this constitutes a 'fair use' of any such copyrighted material as provided for in section 107 of the U.S. Copyright Law.

If you wish to use material from this publication for commercial or purposes of your own that go beyond 'fair use', you must obtain permission from the copyright owner.

Newsletter Articles, ads or corrections should be sent to the editor: **Mark Nelson**, 1475 Paseo Maravilla, San Dimas, CA, 91773. (909) 996-1784 or by email to mnelsonair@aol.com

January Board Meeting
by Linda Nelson, Secretary

Officers/Directors present: Martha Wilson, Linda Nelson, Chris Kyte, Carolyn Duncan, Ed Imlay, Jennifer Jang, Mark Nelson. Absent: Elizabeth Weston, Marcia Goetz, Joe Goetz. Also present: Rebecca and Ralph Fregoso and Marléné Kyte. Jennifer Jang, Librarian, reported that she has catalogued all of the Society's books and reference material for lending to members. A full report of the meeting is available on the Member Tools page of the web site.

January Program Meeting

Jennifer Nishimura gave a comprehensive presentation of Chrysanthemum Stones, with oral descriptions and PowerPoint photos of various forms of this stone.

Mark and Linda Nelson recently returned from Italy. They explained how Carrara Marble is mined, cut, polished and shipped to the United States. Samples were available to members and the feedback from members was appreciated!

February Program Meeting

"Show And Tell"

This year's show is our time to display the things we value in our lapidary and jewelry collections. Award-winning exhibitor Marcia Goetz will show us a sample of a display case and how to make the case liners. Then, Sylvia Cliffe, also an award-winning exhibitor will tell us her secrets for creating a great display. There will be plenty of time for questions. Come early at 6pm and enjoy coffee and refreshments by Trudy Krose's refreshments committee.

Membership Information and Meeting Locations

Membership per calendar year is \$20, \$15 for a second adult member in the same house. Junior members and the third or more members at the same house are \$10. Initiation fee is \$2.00 per person and membership badges are \$7.50. Renewals are due by the October General Meeting and delinquent after December 31st. Mail checks for membership to P.O. Box 5025, Pasadena CA 91117-0025.

Website: pasadenalapidarysociety.org

Email: pasadenalapidary@aol.com

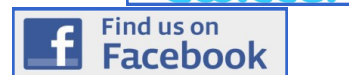
Board Meetings: 7:15 PM on the second Tuesday of the month at the Plymouth Campus of the Monrovia Adult School. Map and directions are on the website. All members are welcome to attend!

Program Meetings: 6:45 - 8:45 PM on the third Tuesday of each month at the Pasadena Central Library at 285 E. Walnut Street. Doors open at 6pm. **Guests are welcome!**

Field Trips are scheduled each month. Refer to the bulletin and website for date, location and info.

Workshop: The use of the club's equipment is available to members from 9am to 5pm on the 2nd Sunday of each month in our shop at 123 E. Montecito Ave., Sierra Madre. There are two sessions - from 9am to 1pm and 1pm to 5pm. Equipment proficiency is required and instruction is free. Fees are \$3 per session or \$5 for a full day. Bring lunch!

Safety: Liability waivers, eye protection, closed-toe-flat-heel shoes and machinery safe-practices are mandatory for all participants. Workshops and field trips are for adult members and juniors with adult supervision.



The Annual Club Show is held the second weekend of March at the Masonic Center, 3130 Huntington Drive, San Marino.

Advertising - a business card size ad is available for \$99 per year or \$10 per edition. Submit text, logos, business card or other copy to the editor at the address or email listed on this page.

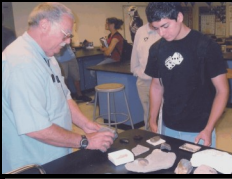


Ed's Corner

EDUCATIONAL OUTEACH

By Ed Imlay

Chair, Education Committee



Ed Imlay at a local school

Jennifer Nishimura will be helping me with presentations to youth groups! To schedule my educational presentation to your group or school contact me by phone at (626) 286-8215 or by email at edimlay@hotmail.com.

Identification: Would you like to know the name of a rock you have acquired? Set it on the table at the rear of the meeting room with a note asking "What is this?" If the interior of the stone is not evident, chip a small piece off or "window" it to reveal the interior (if it will not damage the appearance of the specimen).

Display Table: For the February meeting, please display any items of general interest, especially: workshop projects and items found on field trips. Bring some of the items you collected at the January field trip, or of February's birthstone - Amethyst. For fun, wear something to this meeting containing this month's birthstone!

The February-born shall find
Sincerity and peace of mind,
Freedom from passion and from care,
If they an amethyst will wear.

Source: Gregorian Calendar

WORKSHOP

This Month's Workshop Program:



Martha Wilson will teach a class on making ear wires and heart jewelry for Valentine's Day. The Society will provide copper wire for the class. If you want to make your project of colored, gold, silver or craft wire you should bring your own 20ga dead soft wire.

Philip Lahr needs help at the workshop bagging minerals for treasure wheel prizes. He will bring small zip-lock bags and labels. He will also be bringing a bucket with several pounds of tumbling material from the field trip at Quartzsite to start a supply for juniors who wish to tumble but don't have enough of their own stone.

The Workshop now has two new rock tumblers. These were donated by Ralph and Becky Fregoso and were earmarked for use by our Junior members. One tumbler is a single drum and one is a double drum. Any Junior member can borrow one of the tumblers for up to 8 weeks with instructions, rocks and grit for enough time to tumble the batch of rocks from rough to polished. They will be available at the workshop to the first who see me to claim them. Limit one to a family. Any member who has their own tumbler, such as those available from Harbor Freight, can receive my personal instructions and a starter set of grit from the Society. To take advantage of this, call me at 909-593-2781 to let me know you will be coming.

Carolyn Duncan

Welcome New Members !!



Welcome to Michelle Vandenbroeck, of Glendale, a jewelry designer and to Lucy Yang of Los Angeles, also a jewelry designer, and her husband Jack Yang - an actor. Share the lapidary and jewelry hobby! Invite your friends and neighbors to one of our monthly meetings to learn more about the Pasadena Lapidary Society!

Q: Did you hear the one about the geologist?
A: He took his wife for granite so she left him!



ROCK OF THE MONTH PRESENTATION

Listen to Linda Nelson talk about Amethyst - one of her favorite stones - and her birthstone!

To be scheduled to talk about an interesting rock or mineral please sign up at the monthly meeting or email Martha Wilson.



Meeting Refreshments:



Program Meeting Refreshments — Thanks to Chueie Nishimura and Joan Harrison for January's refreshments! Linda Nelson and Nadine Ishizu are scheduled for February.

To volunteer to bring refreshments ∞ Contact me at (323) 664-9598 or by email at mikekrose@roadrunner.com. Trudy Krose



Do you extend your social and professional network by using Twitter? Look at what Elizabeth Weston has done for our Twitter account!

https://twitter.com/pasalapidary



Sunshine: We are saddened by the passing of Tim Dirk's father last month.∞

Sheryl Aitken is into her regimen of chemotherapy treatment for leukemia this month and has to tame her gypsy ways - hence she is looking for an apartment in the Pasadena or foothill area (see the member-to-member on page 7.

Do you know anyone who is not feeling up to par, has been sick or lost a loved one? On the silver lining side of things, do you know who has achieved a goal, won a personal victory, or done something that deserves recognition? The Pasadena Lapidary Society has a Sunshine Committee to send cards and words of comfort and support and congratulations to those members who are in need or are deserving of it. Notify Trudy Krose at 323-664-9598 or by email at mikekrose@roadrunner.com.



FULGURITES

By Mark Nelson
Pasadena Lapidary Society

Sometimes referred to as petrified lightning, fulgurites are irregularly shaped tubes formed by fusion when lightning strikes sand. Stemming from the Latin word fulgur, meaning lightning, fulgurites are generally found in quartz sand. Most people have never seen a fulgurite, and many that have probably did not realize what it was at the time. Their shape mimics the path of the lightning bolt as it disperses into the ground.

They may be elongated and knobby hollow cones, or they may be elaborately branched networks. The tubes are usually small in diameter, and are lined with thin and shining, lightning-formed glass. Although most of those found are only a few inches in length, some have been found which are thirty feet or more in length. Small pebbles in the sand frequently cling to the fulgurites. Some fulgurites are no larger in diameter than a soda straw, and others have the diameter of a good sized carrot.

All lightning strikes that hit the ground are capable of forming fulgurites. A temperature of 1800 degrees Celsius is required to instantaneously melt sand and form a fulgurite (most lightning strikes have a temperature of 2500 degrees Celsius). Fulgurites have been found worldwide, but are relatively rare.



Elaborate fulgurite



More common sand fulgurite

Two types of fulgurites have been recognized: sand and rock fulgurites. Sand fulgurites are the most common and are generally found in beach or desert regions containing clean (free of fine-grained silt or clay), dry sand. They resemble roots or branching tube-like structures that have a rough surface, covered with partially melted sand grains.

Sand fulgurite tubes have a glassy interior, due to rapid cooling and solidification of the sand after the lightning strike. The size and length of a fulgurite depends on the strength of the lightning strike and the thickness of the sand bed. Many sand fulgurites average 1 or 2 inches in diameter and can be up to 30 inches long. Sand fulgurites have been found in deserts and on top of some of the higher mountain summits.

This rock fulgurite (on the right, circled in white) was found on quartzite at the summit of Mount Raymond in the Wasatch Range, Salt Lake County, Utah. The hammer is for scale.



Coatings or crusts of glass formed on rocks from a lightning strike are called exogenic, or rock fulgurites. These fulgurites are found as veins or branching channels on a rock surface or lining preexisting fractures within the



Glass crust from a rock fulgurite

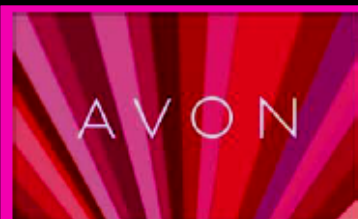
host rock. Mountain peaks are natural lightning rods that are repeatedly blasted by lightning strikes during severe weather. When one is found there may be others near it, or it may be the only one present. Fulgurites are fragile and should be dug out with extreme care and patience.



Photo of a large fulgurite on an Australian beach by Ken Smith, National Geographic

So, the next time you go hiking, rock collecting or exploring be on the lookout for fulgurites!

Sources: *Fulgurites*, by J. C. Zeitner, Lapidary Journal, April 4, 1982; Carl Ege, *Survey Notes*, v. 37 no. 1, January 2005, Utah Geological Survey. Photos via Google Images.



Elizabeth Weston

Independent Avon Sales
Representative / eRepresentative
Serving Pasadena Lapidary Society
members and the Foothill Community

For a brochure or samples, call or text: 213-308-5558
email: mstom80@gmail.com

Or shop online at:

<https://eweston.avonrepresentative.com/>



Bruce J. Lamarche
Piano Technician-Tuner

(626) 201-8710

BLamarche@Verizon.net



Lapidary Club Special
Tune any piano - in your home or business - for only \$99.



Society Activity



Jennifer Nishimura's January presentation on Chrysanthemum Stones was excellent!



Left: Marléné Kyte is happy with the chosen collecting area. Top: Davis Coghill, Marléné, Susan and Hailey Carter and Carolyn Duncan discuss their finds.,



Linda Nelson's photos and description of the Marble Quarries in Carrara, Italy, made it seem that we were there!



Above: One of the shows was offering a horse head made from scrap metal. Right: Charlotte Bane with agate and jasper. Below: The fire of a sunset was a great match with the comfort of a camp fire.



The Saguaro cactus stood like silent sentinels as we searched the desert for mineral specimens!



Jasper and agates were plentiful where Chris Kyte lead us on the field trip.



Have you seen the Society's Facebook page recently? Elizabeth Weston has been busy putting our activities on line!
www.facebook.com/pasadenalapidarysociety
Be sure to "like" it and share it with your friends!

Camping Bargains at Costco
Duracell 1000 lumen LED Flashlight 922241 \$15.99
Timber Ridge Director's Chair with side table 918070 \$28.99
GE Plus Series LED Lantern "D" cell 50 hours on high 604065 \$19.99
The stainless steel Alera "rock storage racks" are back for the season.
A variety of sizes and good prices.



DELTA ONE LAPIDARY
Serving Lapidary Interests
Carrying quality machines by Covington, Graves, Inland, Grobet and Poly-Metric.
Gemstone & Jewelry Supplies & Tools.

We offer great prices and the best technical assistance in the lapidary industry.

On-Line Catalog: www.deltaonelapidary.com. Don't see what you are looking for? Looking for technical or project advice? We sell quality materials, but we give our experience away freely! Call Jerry Hughes or Juli Dahl at (541) 563-7495 or email your question to Jerry@deltaonelapidary.com. Call (541) 961-6340 for orders from 9:00AM to 9:00 PM Pacific Time.
Decades of experience! Free Tech Support!



FOREST & SUN ARBORIST
DESIGNERS • LANDSCAPERS

Office: (909) 444-2727
Cell: (909) 455-6800
email@forestandsun.com

Armando Pedroza
Pasadena Lapidary Society
www.forestandsun.com
State License #893193

Full Tree Services, Property Maintenance, Landscape Design And Installation, Hard-scape Services, Retaining Walls, Driveways, Water Features, Outdoor Kitchens - and more! References and photos.



FIELD TRIPS

By Joe Goetz

2015 Field Trips !



FEBRUARY 15th: TAJIGUAS CREEK



Joe Goetz
Field Trip Chairman

On January 31st I met with the presidents and field trip leaders from neighboring rock clubs to develop an interesting schedule of field trips for our members in 2015. Representatives from Pasadena, Whittier, North Orange County, The Searchers, Woodland Hills, Delvers and Long Beach sat down and polled for places that are both fun and rewarding. The resulting trips will take us to some new places and to some of our favorite places. We'll see some old friends and meet new ones. I'm sure that you will be pleased! The list of trips is on page 7 and a detailed schedule is on the web site.

TAJIGUAS CREEK — There is no better time for a day of exploring the coast north of Santa Barbara for fossilized whale bone, petrified wood, etc., than after winter storms. Our first location will be at Tajiguas Creek and we'll work our way north from there. We'll meet for a briefing on Sunday, the 15th, at 10am in the parking lot of McDonalds, 6900 Market Place Drive, Goleta: use the Glen Anie Rd./Storke Road exit from U.S. 101 and turn south (away from the mountains). Please RSVP to me at (626) 914-5030 or at joenmar1@yahoo.com if you are planning to attend, so I can call you if any details change.

..Somewhere in California. . . Joe Goetz



Congratulations to Chaya Valluri for reading that the full moon in January is known as the Full Wolf Moon!

Congratulations, also, to Tim Dirks for reporting that hand cleanliness helps to avoid spreading germs and infection during "any and all activities of the club - especially during the winter months!" Collect your prizes at the February Meeting!



Editor's Quiz

Juniors: At what temperature does sand melt?

Adults: How much would it cost for Bruce Lamarche to tune your favorite piano?

The answers to this month's quiz can be found in this bulletin. The first Adult and Junior Members to correctly answer these questions will win a special prize at this month's Program Meeting. Email your answer to pasadenalapidary@aol.com or call the Editor.



Kingsley North, Inc.

P.O. Box 216 • 910 Brown Street
Norway, MI 49870-0216

**Your Complete Lapidary
and Jewelry Supply House**

FREE Catalogs

Phone: 800-338-9280

Web site: www.kingsleynorth.com

Email: sales@kingsleynorth.com

Fax: 906-563-7143



Find us on
Facebook



McAfee
SECURE

FEDERATION NEWS

By Joe Goetz

CFMS - California Federation of Mineralogical Societies



Jim Brace-Thompson

Jim Brace-Thompson is heading the California Federation in it's support of the AFMS Future Rockhounds of America merit badge program. The FRA program offers 20 badges for kids to earn by doing activities spanning the full range of our hobby - from taking field trips and collecting to lapidary work, writing newsletter articles, learning about minerals, fossils and meteorites, gemstone lore and legend, and more. Jim says that "any child earning 6 badges symbolically graduates from a "future" rockhound to a full-fledged rockhound and is awarded a Rockhound badge. Since I began the Badge Program 10 years ago, 442 kids have earned that distinction. But there is another award that is far more special and exclusive. Any child earning all 20 badges becomes a Rock Star, earning an AFMS pin and having his/her name featured on a Rock Star Hall of Fame on the AFMS website.

Our Society is interested in creating such a program here! If you are interested in leading or helping to lead this program within our Society, please let us know at pasadenalapidary@aol.com.

AFMS - American Federation of Mineralogical Societies



The American Federation operates by the income from its endowment fund. With income taxes due in a short few months please consider a tax deductible donation of cash or a raffle prize to the AFMS Endowment Fund Drawing. The drawing is at the AFMS Show in Austin, Texas on October 24, 2015. They don't need the actual prize until October. Get me a description and a good quality photo of the prize and I'll get it to them.



At its Annual Meeting in Quartzsite, last month, Mark Nelson was elected President of S.C.R.I.B.E., the national society of bulletin editors. S.C.R.I.B.E. functions to assist clubs to enlist new bulletin editors and to assist current editors in improving the quality of their publications.



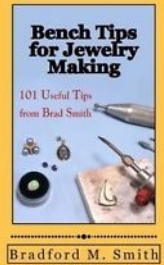
My Rockhound Valentine

I love your hair of citrine hue,
I love your eyes of sapphire blue.
Your ivory teeth are pearly white,
And I love your ruby lips so bright.
Your jade-smooth skin so soft and sleek,
A blush of rose quartz on your cheek,
Placed there from Cupid's palette board,
Makes you a prize to be adored.
You are a gem and you're all mine,
You are my
Rockhound Valentine.

Via the Las Cruces Gem Crafters & Explorer's Club's *El Gambrisiko*
Original source unknown



TIPS, HINTS AND SAFETY



TAPERED REAMERS

By Brad Smith

A tool you don't see often these days is a tapered reamer. It's not a tool you'll use every day, but they're particularly useful for making an irregular hole round or for enlarging a hole to an exact diameter. For example, the small set in the yellow pouch is for holes in the range of 0.3mm to 2.5mm. They are great for sizing a tube to fit a hinge pin. Other times when I'm drilling a hole for riveting and can't find the exact size drill, I simply drill the holes with a slightly smaller bit and enlarge them with a reamer until the wire just fits. For larger hole sizes in sheet metal up to 14 ga, I really like the reamer with the black handle. It makes quick work of sizing holes from about 3mm to 12mm. You can find them in well equipped hardware stores. You may never use the large diameter reamers, but when sawing out some rings from 4mm thick sheet, I found they worked well for rounding and sizing the hole.

* Get all 101 of Brad's bench tips in "Bench Tips for Jewelry Making" at Amazon



LOCAL ROCK AND GEM SHOWS

February 13-22 — INDIO: Shadow Mountain Gem and Mineral Society and San Geronio Mineral & Gem Society, Riverside County Fair & National Date Festival; 82-503 Highway 111; Daily 10-10; adults \$8, seniors \$7, students \$6, children (under 5) free; indoor dealers, 108 showcases, jewelry, gems, beads, crystals, geodes, jewelry repair, lapidary demonstrations, geode cutting.

Look for the gem shows symbol in the calendar on page 8.



27 - March 8 — IMPERIAL: Imperial Valley Gem & Mineral Society, Imperial Valley Expo 200 East 2nd Street. Weekends noon - 10 pm; Weekdays 4 pm - 10 pm www.IVGMS.org

Please plan to attend one of the shows and businesses listed on this page, and wear your club badge, shirt or vest when you do! - Editor

27- March 1 — COSTA MESA: Wholesale and retail show; Gem Faire Inc, OC Fair & Event Center; 88 Fair Dr; Fri. Noon-6pm, Sat. 10am-6pm, Sun. 10am-5pm; Admission \$7, Children free (ages 0-11); Fine jewelry, precious & semi-precious gemstones, millions of beads, crystals, gold & silver, pearls, minerals & much more at manufacturer's prices. Exhibitors from around the world. Jewelry repair & cleaning while you shop. Free hourly door prizes www.gemfaire.com

2015 FIELD TRIP SCHEDULE

- FEBRUARY - TAJIGUAS CREEK - fossilized whale bone
MARCH - LAVIC SIDING AREA - jasper, agate, thulite & more
APRIL - KRAMER JUNCTION - agate, bloodstone, opal, borates
MAY - PRIMM, NV - magma chamber minerals, pyrites, copper mine
JUNE - TOURMALINE DIG - tourmalines and pegmatite minerals
JULY - PALOS VERDES - glaucophane, barite, agate, petrified wood
AUGUST - LOS OLIVOS - soapstone, serpentine
SEPTEMBER - GREENHORN MOUNTAINS - rose quartz, garnet
OCTOBER - SEARLES LAKE CLUB SHOW - hanksite, pink halite
NOVEMBER - WHITTIER CLAIM AREA - agates, fossilized plants
NOVEMBER - JEWEL TUNNEL - see www.jeweltunnel.com
NOVEMBER - THANKSGIVING TRIP - Owens Valley
DECEMBER - SALTON SEA - oyster fossils, obsidian
JANUARY - QUARTZSITE ARIZONA SHOWS

Member - To - Member



From my collection: Chocolate diamond, brilliant cut, 0.23 ct, for \$70. Jim Gersbach at 626-577-6773 or tenomo@netscape.net.

Apartment Needed: Does your retired family or church member want a little extra income by renting a guest apartment or casita to a responsible single club member? Let's help our own! Dr. Davis Coghill 626-391-7296 is in need of one, as is Sheryl Aitken 818-209-6252.

Wanted: Used mining ore cart with wheels. Linda Nelson - (909) 851-4407.

Members are welcome to place a FREE message here for items or services wanted, for sale or for trade. Email submissions to: pasadenalapidary@aol.com or call the Editor.

Maliakei Bags and Accessories



Custom made Bandanas, Handkerchiefs, Drawstring Bags, Hair Scrunchies, Hawaiian Totes - mini to jumbo sizes, Holiday & Seasonal Totes, Patriotic & Sports Totes perfect gifts for a Rockhound!

Look for my on-line store at www.etsy.com maliakei bags or email me at mkirmil at yahoo.com - Mary Kirmil - Member, Pasadena Lapidary Society



The single source supplier for jewelers and gemologists. 319 W. 6th St., Los Angeles, CA 90014 (213) 627-8004 Monday-Friday: 9 a.m. - 5:30 p.m. Saturday: 9a.m. - 4:00 p.m.

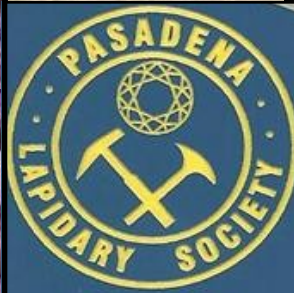
Articles and photographs printed in this bulletin are as credited to their author. Items not so credited are written by the Editor. Photographs not credited are from the public domain or from the Editor and are used for educational purposes. Articles and photographs submitted for publication are welcome and must be received by the 15th of the prior month. The Editor reserves the right to edit any article submitted for publishing.

Supplies, displays, boxes, jewelry tools, precious metal, findings, fine jewelry, stones, settings and wedding bands. A wide variety of lighting, photography boxes, inventory software and product labeling supplies. Metalsmithing and lapidary supplies. Free catalog! www.aajewelry.com. Jewelry and Lapidary clubs are welcome!

**FEBRUARY
2015**

The Pasadena Lapidary Society, Inc.
Bulletin Editor:
1475 Paseo Maravilla
San Dimas, CA 91773-3908

**RETURN SERVICE
REQUESTED**



OUR MISSION

The Pasadena Lapidary Society serves to educate its members and the community in mineralogy, earth sciences and training in the lapidary and jewelry arts – while promoting sound mineral resource stewardship based on environmental awareness and ethical behavior. The Society fulfills its mission year-round which may include field trips, lapidary workshops, outreach presentations, public mineral displays, an annual show, and monthly informational meetings open to the public.



Amethyst polished to a sphere to reveal the matrix and crystal.



The Pasadena Lapidary Society is affiliated with the California and American Federations of Mineralogical Societies. Our editor is a member of the Special Congress Representing Involved Bulletin Editors.

February 2015

Sun	Mon	Tue	Wed	Thu	Fri	Sat
1	2 Candlemas 	3 Full Moon	 Confederate States Formed 1861	5	6 Ronald Reagan born Feb. 6 1911 	7
8 Workshop 	9	10 Board Meeting 	11	12 Abraham Lincoln born Feb. 12 1809 	13 	14
15 Field Trip to Tajiguas Creek	 Presidents Day Holiday	17 Program Meeting 	18 ASH WEDNESDAY	 CHINESE NEW YEAR	20 John Glenn orbits the Earth 1962 	21 Shadow Mountain Gem & Mineral Show at Date Festival
22 Shadow Mountain Gem & Mineral Show at Date Festival	23 Japan attacks Santa Barbara - February 23, 1942	24	25	 Golden Gate Bridge Construction starts 1933	27 	28