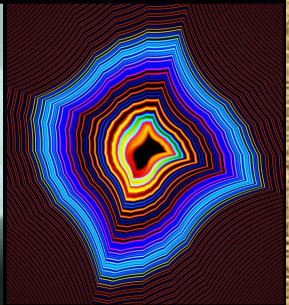


ROCKHOUND RAMBLINGS

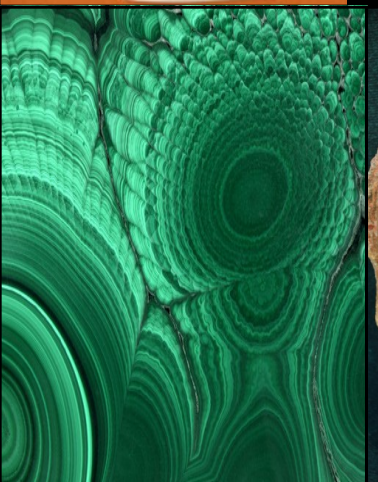
MARCH 1, 2012

THE NEWSLETTER OF THE PASADENA LAPIDARY SOCIETY - PASADENA, CALIFORNIA



INSIDE THIS ISSUE

<i>President's Message</i>	2
<i>Club News & Information</i>	2
<i>Ed's Corner, Workshop, and More Club News</i>	3
<i>Feature Article: Discover Rockhounding</i>	4
<i>Feature Articles Dinosaurs and cabochon making</i>	5
<i>Field Trips, Federation News</i>	6
<i>Articles, Shows, Local Events & Member-to-Member</i>	7
<i>Calendar of Monthly Events</i>	8



Discover Rockhounding

Continued on page 4



President's Message



Hi,
PLS Members!

We are quickly approaching March and, with it, our gem and mineral show!

We are busy "dotting our i's" and "crossing our t's" to ensure a terrific show. Please remember we will

need everyone to participate in one way or another and are looking forward to seeing all our members.

Another item is that the Board has been considering a relocation of the general meeting. The decision is up to the membership via a ballot. The options on the ballot are Pasadena Library, Sierra Madre Senior Center or Sierra Madre Recreation Center. You should have all received your

letter, ballot and self-addressed return envelope by now. We ask that you cast your vote and return them. A tally of the ballots will be made at the March Board Meeting. I will let you know the results soon afterward!

I want to end with the news that Chris Kyte is doing better and for this we are very grateful!

..... *Marcia Goetz, President*

Meeting and General Club Information

Officers

Marcia Goetz, President
(626) 914-5030
joenmar1@verizon.net

Carolyn Duncan, Vice President
(909) 593-2781
gem.quest@verizon.net

Linda Nelson, Secretary/Treasurer
(909) 592-1322
lnelsn@verizon.net

FAIR USE NOTICE. This publication may contain copyrighted material the use of which has not been specifically authorized by the copyright owner.

We are making such material available in our efforts to advance the educational understanding of the amateur jewelry fabrication and rock collecting hobbies.

We believe this constitutes a 'fair use' of any such copyrighted material as provided for in section 107 of the U.S. Copyright Law.

If you wish to use material from this publication for commercial or purposes of your own that go beyond 'fair use', you must obtain permission from the copyright owner.

Newsletter Articles, ads or corrections should be sent to the editor: **Mark Nelson**, 1475 Paseo Maravilla, San Dimas, CA, 91773. (909) 996-1784 or by email to mnelsonair@aol.com

February Board Meeting
by Linda Nelson, Secretary

Officers present: Marcia Goetz, Carolyn Duncan and Linda Nelson
Chairs/Members present: Vern Cliffe, Sylvia Cliffe, Drew Wilson, Chris Kyte, Joe Goetz, Mark Nelson, Dave Kelty and Ed Imlay.
An allowance of \$150 for two show signs was approved. The possibility of cancelling July and August meetings was discussed and tabled. It was determined that the question of moving our meeting location would be made by the membership by means of a secret ballot. Marcia will prepare them for distribution at the monthly meeting.

February Meeting

Drew Wilson announced that there are 10 display cases available. Dave Kelty showed part 2 of the club's Library on a display table and explained how to check out a book.. Carolyn Duncan won the raffle's grand prize of a rare framed "mineral postage stamp on a First Day Cover". We watched the video of Benitoite, the California State Gem.

President Goetz distributed the ballots that will determine where the club meets in future years and explained how to mark the ballot and mail it back to the club's P.O. Box.

March Meeting

The results of the voting for a meeting place will be announced. The door prize raffle prizes keep getting better. An amethyst cluster is promised for this meeting. Support the club by buying tickets!
Carolyn Duncan has obtained the fascinating video from CFMS that tells the story of a tree's journey from a prehistoric living giant through the eons of metamorphosis to enter a new life as petrified wood! Bring young minds and enjoy this presentation!

Membership Information and Meeting Locations

Membership per calendar year is \$20, \$15 for a second adult member in the same house. Junior members and third or more members at the same house are \$10. Initiation fee is \$2.50 per person and membership badges are \$7.50. Renewals are due by the October General Meeting and delinquent after December 31st. Mail membership checks to P.O. Box 5025, Pasadena CA 91117-0025.

Board Meetings: 7:00pm on the first Wednesday of the month at the One West Bank, 1 E. Foothill in Arcadia. All PLS members are welcome to attend.

General Meetings: 7:00 PM each month on the third Wednesday at the Pasadena Central Library at 285 E. Walnut Street. Guests are welcome!

Field Trips are scheduled each month. Refer to the bulletin for date, location and information.

Workshops and instructions are offered in our well-equipped shop in Pasadena to all club members - normally on the 2nd Sunday of each month. Refer to the bulletin for hours and the calendar for date changes. Eye protection, closed-toe shoes and machinery safe practices

are mandatory for all participants. Call a board member for the workshop address

Workshops and field trips are for adult members and children with direct parental supervision.

The Annual Club Show is held the second weekend of March at the Masonic Hall, 3130 Huntington Drive, San Marino.

Advertising - a business card size ad is available for \$99 per year or \$10 per edition. Submit text, logos, business card or other copy to the editor at the address or email listed on this page.

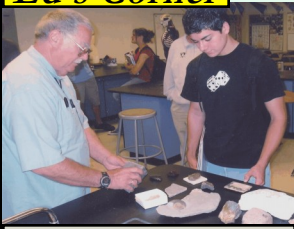


Ed's Corner

EDUCATIONAL OUTEACH

By Ed Imlay

Chair, Education Committee



Ed Imlay at a local school

The beginning of the calendar year is a perfect time to schedule school visits. Contact me at (626) 286-8215 or at edimlay@hotmail.com for details.

Please bring items to display at the March meeting. Members can display any items of general interest or for identification, workshop projects, material from locations of recent or upcoming field trips, and the birthstone of the month: Aquamarine



WORKSHOP

Since the second Sunday is our annual Show, this month's Workshop is on the first Sunday of the month. This would be a good time to bring items for the silent auction or treasure wheel - or we'll come by and pick them up this day. Workshop hours are from 1:30 until 5PM. Parking is on the west side of street - please park compactly along the curb so that others will have room to park behind you. Alternate parking is available next door to the workshop in a paved lot behind the buildings on Foothill Boulevard. Call 909-996-1784 for directions.

2012 SHOW



Mark Nelson
Co-Chair

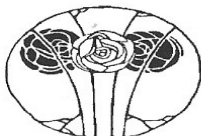
The next show meeting is on March 4th at 10 am at Drew's (before the workshop), if you feel like joining us, please do! We would like to get your input to make the show the best we can!

As of the end of February, these are the areas where we still need volunteers in these areas:

Selling raffle tickets. I'm asking every member to sell \$100 worth of raffle tickets. This is a make-or-break time for our club's finances. Again this year the club will award a special prize to the person who sells the most tickets. I hope it is YOU! Sell them for 6 for \$5 or 120 tickets for only \$100. If you need tickets to buy, call or email me and someone will get them to you! .

Ed Imlay is still needing people to help with the demonstrations so let him know if you can demo. **Drew Wilson** needs prizes for the sand scoop. **Carolyn Duncan** is looking for pleasant people to be greeters and grab bag sellers.

THE SAN GABRIEL BEAD COMPANY



Create your own jewelry!

325 E. Live Oak Ave.
Arcadia CA 91006

(626) 447-7753

www.beadcompany.com

Hours: Tue-Thurs 12-9pm, Fri 12-6pm, Sat 10am-6pm, Sun 12-5pm

beads, books, gourds, tools, workshops, metals & friendly advice

**Welcome
New Members !!**



Share the lapidary and jewelry hobby. Invite your friends and neighbors to become members of the Pasadena Lapidary Society!

You Can Display At The Show!

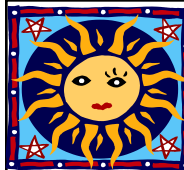
You were attracted by the fine display of minerals and jewelry the first time you attended the club's annual show! These display cases are lighted, locked and brought out of storage each year for our members to use at the show. Did you know that these are available to **you**, on a first-come basis, **at no cost**? Display your interesting finds or creations! Call or email Drew Wilson today and reserve your case. 626-449-4910 or todrew@sbcglobal.net.

Show Display Tip

In some displays you want a slab to show how it looks before polishing. Water wont stay wet, grease looks greasy, some waxes turn white under heat. If you rub the surface with liquid detergent and wipe it off, there is no shine and the pattern will show. (Courtesy of Breccia and The Rockhound 2/12)



Both James Madison and Grover Cleveland were United States Presidents, had birthdays in March and are on our currency. What man who was born in March and has his portrait on our common currency was not a president of our country? For other interesting trivia, see the calendar on page 8. Submit interesting trivia for the newsletter to the editor at the contact on Page 2.



Thanks to Jim Gersbach for his generous gift of valuable lapidary research books to our lending library. If you are interested in the titles or in checking out the books, contact our Librarian, Dave Kelty, at 909-337-2047 or at davidakelty@hotmail.com.

Past President Chris Kyte continues his recovery from back surgery. He was seen at the February Workshop.

President Marcia Goetz' step-father passed away this month and she is involved with caring for her mother and the family.

If you know anyone who is not feeling up to par, has been sick or lost a loved one? On the silver lining side of things, do you know who has achieved a goal, won a personal victory, or just something that deserves recognition? The Pasadena Lapidary Society has a Sunshine Committee to send cards and words of comfort and support and congratulations to those members who are in need or are deserving of it. Notify Trudy Krose at 323-664-9598 or at mikekrose@roadrunner.com.



(Continued from page 1)

DISCOVER ROCKHOUDING is the theme of our club's show this year. Let's take this opportunity to introduce others to the interesting science, art and hobby that is Rockhounding.

Our club's Mission Statement states that the Pasadena Lapidary Society serves to educate its members and the community in mineralogy, earth sciences, and training in the lapidary and jewelry arts – while promoting sound mineral resource stewardship based on environmental awareness and ethical behavior. It further states that the Society fulfills its mission through field trips, lapidary workshops, outreach presentations, public mineral displays, an annual show, and monthly informational meetings open to the public.

Our world abounds with many different and interesting rocks and minerals. Our show this year gives us the opportunity to showcase to the public those which we have collected in our travels. Would you like to show people what you have collected? Put them into a display case at the show. Want to explain your exhibit? Volunteer to be a "docent" in the show case room! Want to do a technical display? Do a display of minerals of the MOHS Scale and show our visitors how a knife or steel nail will scratch minerals of a hardness of 5 or less.

Many of our guests will have lived their entire lives in the urban environment. They would not get out to see things and collect minerals unless they were guided. This is where our Field Trip Program comes in. Our field trips enable people to take advantage of the experience of a



variety of trip leaders to take them to places where they can enjoy the natural world and collect mineral specimens for themselves - all this while promoting environmental awareness and stewardship.

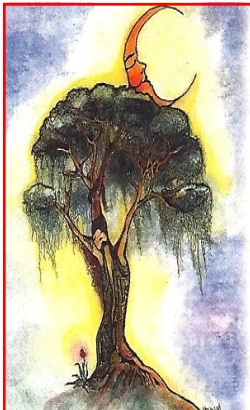
Our Annual Show needs your participation!. This is our opportunity to show the public what a fun and rewarding experience it is to DISCOVER ROCKHOUDING.

Q: Why are many coin banks shaped like pigs?

A: Long ago, dishes and cookware in Europe were made of a dense orange clay called 'pygg'. When people saved coins in jars made of this clay, the jars became known as 'pygg banks.' When an English potter misunderstood the word, he made a bank that resembled a pig. And it caught on!



We will be encouraging people to get involved in the lapidary and jewelry arts. We'll be demonstrating these skills at the show. Hopefully they will be moved to join the club and try their hand at these skills at our Workshop.



Rocks & Runes
 Your Place For Crystals
 1006 N. Lima St.— Burbank, CA 91505
 (818) 846-0108
 We carry gemstones from A to Z.
 Let us show you how to use gems and crystals for health as did the ancients.
 Classes, Meditation, Cards of Destiny.
 Tue-Sat. 11am-7pm, Sun 12pm-5pm
 email: rocksandrunes@yahoo.com
 web: www.rocksandrunes.com
Wendy Ansel
 A Pasadena Lapidary Society Member

Dinosaur Updates

North America's Biggest Dinosaur Found in New Mexico

A dinosaur belonging to the sauropods that were related to the *Diplodocus* were found in New Mexico. It is known as *Alamosaurus sanjuanensis*. It lived about 69 million years ago and was described to be as large as the *Titanosaurs* sauropods discovered in South America which included *Argentinosaurus* and *Puertasaurus* which weights up to 80 - 100 metric tons.

Nate Carroll, left, and Liz Freedman of Montana State University with the complete reconstruction of the neck vertebra.



Dinosaur Footprints Discovered in Arkansas



Researchers discovered a field of 120 million-year-old footprints in southwestern Arkansas. Included were three-toed dinosaur tracks, measuring 24 inches long by 12 inches wide. Researchers, at the University of Arkansas, Fayetteville, believe the three-toed print may belong to *Acrocanthosaurus atokensis* - a large predator. The site also contains the giant prints of sauropods -- large, long-necked, plant-eating dinosaurs such as *Pleurocoelus* and *Paluxysaurus*.

From the Livermore Lithogram Feb 2012

How To Create A Gem Stone

By Dick Peterson
Timpanogos Gem & Mineral Society



Terms I use will be *cab* or *cabochon* (which is any domed gemstone); *cabbing* (the art of shaping a gem stone); *cabber* (the person doing the work); *free form* (creating a cabochon without the use of a template or pattern). I don't consider myself as being a professional cabber, but still a good one.

I will start by using my Genie as an example. I like doing *free form* the best. I will choose an Agate, Jasper or whatever and start by grinding the edges until I get the shape I want or whatever it lets me make. There is no doming at this point. It might look like a tear drop or somewhat round or whatever. This is all done on the first Diamond wheel, which is 80 grit. This wheel is your work horse. Now you have a choice of starting the dome free hand or attaching a dop stick. I prefer the dop stick as it give you a better view of the cab and saves a lot on fingernails and fingers.

You stay on the 80 grit wheel and start your dome, but first take your aluminum pencil and put a small x where you want the peak of the dome. When the x is ground off, you have your dome. Leave about 1/16 of an inch (more or less) for an edge. You slope the cab from here to your x on the dome.

When you are satisfied with the shape, you go to your next wheel (220 grit) and start sanding your cab to get all the scratches and marks out. You can still do some fine tuning of your cab here. After you are satisfied with your sanding go to the next finest wheel to start your fine sanding. Then to the next and keep going until you are through all 6 wheels.

Now go to your polish wheel. After this process, if you see any sand marks go back to your third or fourth wheel and do it again.

One thing to remember—DO NOT USE A LOT OF PRESSURE ON YOUR CAB, and especially even less on the last four wheels as a light pressure will usually give you a better polish. Moderate pressure on your 80 grit wheel is best because a lot of pressure can damage your wheel or shorten its working life. It can cause your cab to chip or even break. I have tried to give you some ideas, but the best teacher of all is doing it yourself. Make your own mistakes and learn from them by doing your own cabbing on your way to becoming a GOOD CABBER. Keep trying — don't give up — you can do it! **Dick**

NOW FOR A QUICK TIP — If you have a spray bottle of water that you use to wet your polishing wheel, put about 1/3 cup of vinegar in your spray bottle and fill the bottle with water. Use this vinegar/water mixture like you would normally wet your wheel. After a little use — you will notice a little better shine on your cabochons!



FIELD TRIPS

By Joe Goetz



Joe Goetz, Field Trip Chairman

**Lavic Siding Collecting Area
March 24th & 25th**

Wouldn't be nice to go to a place where you could camp and collect in the same spot? Well that place is Lavic siding off the I-40! After a good night's sleep you step out of your tent or RV with a cup of coffee in hand and you wonder where you'll go to do some collecting. It's then you realize all you really need to do is bend over and pick-up the very stone you're there to collect. That's right, the stone is jasper: it comes in green, red, orange, various shades of brown, yellow and some are mixes of these colors and others have agate "windows" with flecks of color in them.



You'll have this chance on this fieldtrip! Now you may think you're limited to this one area, well this isn't true at all. If you go up the road where you had driven down the day before and check the washes that run north to south, you'll probably find larger pieces of jasper.

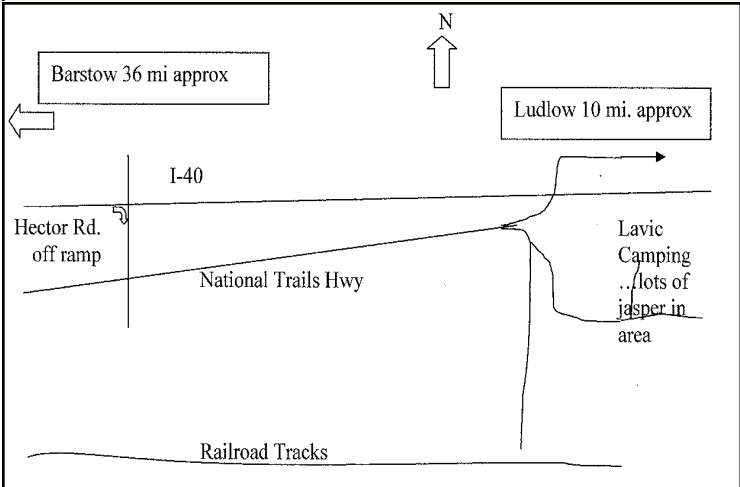
Across the freeway are the Cady mountains, a treasure trove of stones and minerals to collect. Minerals such as psilomelane, gypsum and copper to name a few. Agates of plume, moss, banded and fortification, as well as jaspers of all colors possible, similar to what is found in camp. You could quite literally spend a week or two exploring and still not find everything that is out there.

This is a good trip for the first timer or the veteran rockhound; there is lots of stuff to collect. On Saturday evening we will have a potluck dinner at 4:30PM. Typically we will be leaving camp around 8:30AM and monitoring FRS radio frequency 14-0. Hope to see you there!

Call or email me to let me know you are coming in case there is a change of plans or for detailed directions - 626-914-5030 or joen-mar1@verizon.net.

..... Lost somewhere in California

Wrong way Joe.....



FEDERATION NEWS

CFMS - California Federation of Mineralogical Societies

There is still space open at the 2012 Earth Science Seminar at Soda Springs (Zzyzx) for those who have an RV to sleep in. Call Marion Roberts at (209) 538-0197.



Burl LaRue, CFMS Safety Chair reminds us to prepare our vehicles for a year of field trips: I know a few of us haven't checked our cars for the following: proper antifreeze for places to which you plan to travel and a new set of windshield wipers. Check your brakes - brakes that stop your vehicle on a dry surface may not do the job if it's wet. Check your tires - the proper tread on tires will keep your family safe. I hope you never get stranded but, just in case, the following items will only take up a small amount of space in the trunk: tire chains, tow strap, first aid kit, jumper cables, a warm blanket, one or two days of your meds, some food bars and water.

Save The Date: The 2012 CFMS Show and Convention will be held July 13-15, 2012 in Riverside, California.

Read the entire articles at: www.cfmsinc.org/newsletters

AFMS - American Federation of Mineralogical Societies

AFMS International Relations Chair Bob Jones is no stranger to the world of travelling and writing. As Senior Consulting Editor for Rock & Gem Magazine, his contributions are always eagerly awaited and often the first thing read by subscribers. Now, he's taken some of his magazine articles, expanded them, added numerous anecdotes and photographs and produced "The Frugal Collector, Volume I", a fabulous new book. Chapters include information about a variety of minerals that most mineral lovers would want in their own collection with an eye towards keeping acquisitions affordable for all.

Bob's easy writing style, selection of photographs and comments, make this volume a "must have" for any home library. The volume is available from Rock & Gem, the official magazine of the AFMS.

The AFMS Convention will be held in Minnetonka, MN the weekend of July 26-29. Read the latest AFMS newsletter at: <http://www.amfed.org/news>



**FARRIN O'CONNOR
DESIGN**



146 W. Bellevue Drive, Pasadena

This is a true "hidden gem" for those interested in lapidary and jewelry work. A fully-stocked store with books, tools, beads and findings awaits you. Learn how to make jewelry from nothing-to-finished in their one-day classes. See upcoming classes and instructors at www.farrinoconnordesign.com/classes Or call them at (626) 796-5300. Free fenced parking.



The February Fieldtrip Report
By Joe Goetz

Friday was the day to leave to the great adventure, which was to get out to the high desert. In no time we were at the Stoddard off-ramp and heading toward camp, stopping only long enough to put out signs. At camp we found Vern and Sylvia already there as were Ed, Corrine, Carolyn and Charlotte. We talked a little bit and we looked around some but didn't find much.

On Saturday morning the group was joined by Rex and Cheui and family, Mark, Linda, Art, Ginger and Debra - a guest from Vermont. The first place we went to was the blue dolomite area and everyone found some. Mark changed a flat tire, made easier by the help of people and equipment.

Next was the tri-color marble area, where we collected a lot of promising material and it was Jay's turn to change a tire. From there we went to an extensive talc mine. The talc was in layers as opposed to solid thicker pieces, but it may be carveable. The day was a good one, we had been to some of the known locations and it wasn't hot and not too windy. These are some of what I thought about as I drifted off to sleep.

Sunday after breakfast we gathered to head out for the Grand View Mine and the bug eye rhyolite. We found rhyolite everywhere. I finally hiked up to the ridge. I looked down into the mine and thought how scary it appeared from this angle. I can tell you we had fun and look forward to the next trip, which is to the Lavic area for jasper on March 24 & 25.

LOCAL ROCK AND GEM SHOWS:


March 3-4: ARCADIA, CA: Monrovia Rock-hounds; County Arboretum and Botanic Garden; Ayres Hall, 301 S. Baldwin Ave.; Sat. 9-4:30, Sun. 9-4:30.

Look for the gems in the calendar on page 8.



3 - 4: VENTURA, CA: Ventura Gem & Mineral Society. Ventura County Fairgrounds
10 W. Harbor Blvd. Hours: Sat 10 - 5; Sun 10 - 4.

8-9: VICTORVILLE, CA: 35th annual tailgate; Victorville Gem & Mineral Club; Stoddard Wells ; Stoddard Wells Rd., 7 miles east of I-15; Thu. 8-dusk, Fri. 8-dusk. On Saturday and Sunday, come to the Pasadena Show! :)

 **10 - 11: PASADENA LAPIDARY SOCIETY.**
Masonic Hall 3130 Huntington Drive, San Marino, CA 91108 Hours: Sat 10 - 6, Sun 10 - 5

Please plan to attend one of the shows listed on this page, and wear your club badge when you do! - Editor

16 - 18: SAN BERNADINO, CA. Orange Belt Mineralogical Society. Western Regional Little League Ball Park 6707 Little League Drive 9am to Dusk daily.

Member - To - Member

Field Trip: We want to take a rock trip deeper into AZ this month, maybe in the Burro Creek area. We are planning on at least 4 days for this excursion. We have a few leads we might check out. Does anyone have any recommendations as to where to go? Would anyone like to go with us? Rex Nishimura (818) 720-6042 or at rexch8@yahoo.com.

Jim Gersbach is looking for a used faceting machine. Contact him at (626) 577-6773 or at tenomo@netscape.net.

Members are welcome to submit an ad for items wanted, for sale or free to other members. Submit a non-commercial ad of three lines to the editor by email at mnelsonair@aol.com or to the address on page 8.



DELTA ONE LAPIDARY
WALDPOR, OREGON
Serving Lapidary Interests

Carrying quality machines by Covington, Graves, Inland, Grobet and Poly-Metric equipment.
Gemstone & Jewelry Supplies & Tools.

We offer great prices and the best technical assistance in the lapidary industry.

On-Line Order Catalog: www.deltaonelapidary.com. Don't see what you are looking for? Looking for technical or project advice? We sell quality materials, but we give our experience away freely! Call Jerry Hughes or Juli Dahl at (541) 563-7495 or email your question to Jerry@deltaonelapidary.com. Call (541) 961-6340 for orders from 9:00AM to 9:00 PM Pacific Time.



Decades of experience! Free Tech Support!



The single source supplier for jewelers and gemologists.
319 W. 6th St., Los Angeles, CA 90014 (213) 627-8004
Monday-Friday: 9 a.m. - 5:30 p.m. Saturday: 9a.m. - 4:00 p.m.

Supplies, displays, boxes, jewelry tools, precious metal, findings, fine jewelry, stones, settings and wedding bands. A wide variety of lighting, photography boxes, inventory software and product labeling supplies. Metalsmithing and lapidary supplies. Free catalog! www.aajewelry.com.

We carry the best quality tools and equipment available in the industry, at the best prices in the United States! We can confidently say that no supplier has lower prices. Jewelry and Lapidary clubs are welcome!

First Class Mail



**March
2012**

The Pasadena Lapidary Society, Inc.
Bulletin Editor:
1475 Paseo Maravilla
San Dimas, CA 91773-3908

**RETURN SERVICE
REQUESTED**



Pasadena, California
U.S.A.



Vice President - CFMS South

The Pasadena Lapidary Society is affiliated with the California and American Federations of Mineralogical Societies. Our editor is a member of the Special Congress Representing Involved Bulletin Editors.

March 2012

Sun	Mon	Tue	Wed	Thu	Fri	Sat
The name of March comes from ancient Rome, when March was the first month of the year and named Martius after Mars, the god of war. In Rome, where the climate is Mediterranean, March was the first month of spring, a logical point for the beginning of the year as well as the start of the military campaign season.				1 1961 	2	3
4 Workshop	5	6 1836	7 Board Meeting	8 Full Moon	9 Purim 8th & 9th	10 PLS Show
11 PLS Show	12 100 Years of Girl Scouting	13	14 Pi Day	15 Julius Caesar 44 BC	16	17 HAPPY ST. PATRICK'S DAY!
18 	19	20 First Day of Spring	21 Meeting General	22	23	24 Field Trip
25 Field Trip	26	27	28	29	30 Alaska Purchase 1867 ALASKA 1867 BPH 938 The Last Frontier	31 Cesar Chavez Birthday 1927