

ROCKHOUND RAMBLINGS

FEBRUARY 1, 2012

THE NEWSLETTER OF THE PASADENA LAPIDARY SOCIETY - PASADENA, CALIFORNIA

INSIDE THIS ISSUE

<i>President's Message</i>	2
<i>Club News & Information</i>	2
<i>Ed's Corner, Workshop, and More Club News</i>	3
<i>Feature Article: Meteor Impact Minerals.</i>	4
<i>Field Trip Report and Member To Member</i>	5
<i>Field Trips, Federation News</i>	6
<i>Articles, Shows & Local Events</i>	7
<i>Calendar of Monthly Events</i>	8



METEOR CRATER, located approximately 43 miles east of Flagstaff in the northern Arizona desert, is possibly the best preserved meteorite impact crater on Earth! While the object that created this crater was a nickel-iron meteorite about 162 feet across, the minerals created by the tremendous impact are finding their way into jewelry and lapidary uses. At this site it was proven in 1960 that certain minerals are found naturally only at the occurrence of meteor impacts. Because these minerals are only found at impact sites they are both rare and unique. **Coesite**, a form of silicon dioxide, is formed when very high pressure and high temperature are applied to quartz. Naturally

Continued on page 4



President's Message



PLS Members,

I write this message to you after our first general meeting in 2012.

We had a great meeting with the program on show display cases. I demonstrated how to cover the cardboard to have a nice looking liner. Sylvia graciously described how best to set up your items in a case taking into consideration sizes, placement and balance. Other considerations

were labeling and the color of the case liner.

There are still cases available for you to do a display. Drew Wilson is signing up people for the club display cases and has about 8 left. Call Drew at 626-449-4910 or at drew@sbcglobal.net. Since the theme is "Discover Rockhounding" you can put your favorite rocks and creations on display! I am going to be picking up some cardboard for lining the cases and if anyone needs some please let me know soon.

Ed Imlay is in charge of The Club Case. This is a large case where members can display items that they may not want in their individual case, or for those who don't want

to have a case but want to show a couple items. Contact Ed at edimlay@hotmail.com or at (626) 286-8215 for details.

In January' we also had the club library at our meeting for the first time in many years. You may not have even known we have one...but we do and the books are a great resource for helping you learn more about lapidary! Dave Kelty is our librarian and will have a list of our books along with a sampling of them for check out. If there is any on the list you would like to check out he will bring it to the next meeting.

..... *Marcia Goetz, President*

Meeting and General Club Information

Officers

Marcia Goetz, President
(626) 914-5030
joenmar1@verizon.net

Carolyn Duncan, Vice President
(909) 593-2781
gem.quest@verizon.net

Linda Nelson, Secretary/Treasurer
(909) 592-1322
lnelsn@verizon.net

January Board Meeting
by Linda Nelson, Secretary

Officers present: Marcia Goetz, Carolyn Duncan and Linda Nelson
Chairs/Members present: Vern Cliffe, Sylvia Cliffe, Drew Wilson, Chris Kyte, Joe Goetz, Mark Nelson and Ed Imlay.
Upcoming meeting programs were discussed and approved, as was the transfer of \$500 to our CD. Field trips and bylaws revisions were discussed, as were committee chairs. A committee was formed to look into relocating future club meetings to Sierra Madre and to report their findings to the Board.

January Meeting

Marcia Goetz and Sylvia Cliffe demonstrated how to cut and prepare liners for the club's member show display cases. A discussion was held as to what makes the best liners, how to add display platforms inside, and how to make the case attractive. Marcia offered to provide cardboard for the liners at her cost.
Drew Wilson announced that there are cases available, and Dave Kelty showed part of the club's Library on a display table. Carolyn Duncan won a rare framed "mineral postage stamp on a First Day Cover" at the door prize drawing.

February Meeting

The CALIFORNIA STATE GEM is the program this month! Little known but increasingly rare, this blue barium titanium silicate mineral is found with an unusual set of host rock minerals like natrolite, neptunite, joaquinite, serpentine and albite. It fluoresces under short wave ultraviolet light, appearing bright blue to bluish white in color. Come to the program to learn the name of this rare stone! Bring some to show the club if you have any!



FAIR USE NOTICE. This publication may contain copyrighted material the use of which has not been specifically authorized by the copyright owner.

We are making such material available in our efforts to advance the educational understanding of the amateur jewelry fabrication and rock collecting hobbies.

We believe this constitutes a 'fair use' of any such copyrighted material as provided for in section 107 of the U.S. Copyright Law.

If you wish to use material from this publication for commercial or purposes of your own that go beyond 'fair use', you must obtain permission from the copyright owner.

Newsletter Articles, ads or corrections should be sent to the editor: **Mark Nelson**, 1475 Paseo Maravilla, San Dimas, CA, 91773. (909) 996-1784 or by email to mnelsonair@aol.com

Membership Information and Meeting Locations

Membership per calendar year is \$20, \$15 for a second adult member in the same house. Junior members and third or more members at the same house are \$10. Initiation fee is \$2.50 per person and membership badges are \$7.50. Renewals are due by the October General Meeting and delinquent after December 31st. Mail membership checks to P.O. Box 5025, Pasadena CA 91117-0025.

Board Meetings: 7:00pm on the first Wednesday of the month at the One West Bank, 1 E. Foothill in Arcadia. All PLS members are welcome to attend.

General Meetings: 7:00 PM each month on the third Wednesday at the Pasadena Central Library at 285 E. Walnut Street. Guests are welcome!

Field Trips are scheduled each month. Refer to the bulletin for date, location and information.

Workshops and instructions are offered in our well-equipped shop in Pasadena to all club members - normally on the 2nd Sunday of each month. Refer to the bulletin for hours and the calendar for date changes. Eye protection, closed-toe shoes and machinery safe practices

are mandatory for all participants. Call a board member for the workshop address

Workshops and field trips are for adult members and children with direct parental supervision.

The Annual Club Show is held the second weekend of March at the Masonic Hall, 3130 Huntington Drive, San Marino.

Advertising - a business card size ad is available for \$99 per year or \$10 per edition. Submit text, logos, business card or other copy to the editor at the address or email listed on this page.

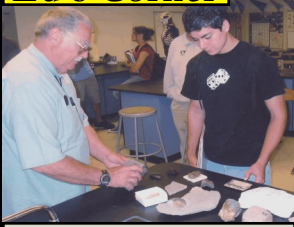


Ed's Corner

EDUCATIONAL OUTEACH

By Ed Imlay

Chair, Education Committee



Ed Imlay at a local school

The beginning of the calendar year is a perfect time to schedule school visits. Contact me at (626) 286-8215 or at edimlay@hotmail.com for details.

Please bring items to display at the February meeting. Members can display any items of general interest or for identification, workshop projects, material from locations of recent or upcoming field trips, and the birthstone of the month: Amethyst →



WORKSHOP

We are going to work on show things at the next two workshops and can use your help. We'll be filling grab bags, cutting and mounting prizes and the like. This would be a good time to bring items for the silent auction or treasure wheel - or we'll come by and pick them up this day. Workshop hours are from 1:30 until 5PM. Parking is on the west side of street - please park compactly along the curb so that others will have room to park behind you. Alternate parking is available next door to the workshop in a paved lot behind the buildings on Foothill Boulevard. Call 909-996-1784 for directions.

2012 SHOW



Mark Nelson
Co-Chair

The next show meeting is on February 12 at 10 am at Drew's (before the workshop), if you feel like joining us, please do! We would like to get your input to make the show the best we can!

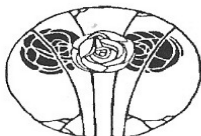
As of the first of February, these are the areas where we still need volunteers in these areas:

Selling raffle tickets. I'm asking every member to sell \$100 worth of raffle tickets. This is a make-or-break time for our club's finances. Again this year the club will award a special prize to the person who sells the most tickets. I hope it is YOU! Sell them for 6 for \$5 or 120 tickets for only \$100. If you need tickets to buy, call or email me and someone will get them to you! .

Ed Imlay is still needing people to help with the demonstrations so let him know if you can demo. Drew Wilson needs prizes for the sand scoop.

(Continued on page 7)

THE SAN GABRIEL BEAD COMPANY



Create your own jewelry!

325 E. Live Oak Ave.
Arcadia CA 91006

(626) 447-7753

www.beadcompany.com

Hours: Tue-Thurs 12-9pm, Fri 12-6pm, Sat 10am-6pm, Sun 12-5pm

beads, books, gourds, tools, workshops, metals & friendly advice

**Welcome
New Members !!**



Share the lapidary and jewelry hobby. Invite your friends and neighbors to become members of the Pasadena Lapidary Society!

You Can Display At The Show!

You were attracted by the fine display of minerals and jewelry the first time you attended the club's annual show! These display cases are lighted, locked and brought out of storage each year for our members to use at the show. Did you know that these are available to **you**, on a first-come basis, **at no cost**? Display your interesting finds or creations! Call or email Drew Wilson today and reserve your case. 626-449-4910 or todrew@sbcglobal.net.



Sunshine: Member Dominic Black has been honored by the City of San Dimas for his part in creating a series of beautiful murals depicting San Dimas citrus packing labels. As the

head of San Dimas High School's Art Department, he made the large wall murals a class project. The murals were dedicated to the community by Mayor Curt Morris in a ceremony at the City Maintenance Yard, 301 S. Walnut, San Dimas where they can be viewed. More about the mural project can be found at: www.sandimasarts.com/2008_SD_Maintenance_Wall.htm



Dominic Black



Past President Chris Kyte is recovering from back surgery he underwent on January 25th. Your thoughts and prayers are welcome! He can be reached at 626-794-0519 or ckyte60@att.net or by mail at 835 W. Mountain View Street, Altadena CA 91001-4926

President Marcia Goetz' step-father suffered a stroke at the end of January. She may be away from her duties while caring for her mother and the family.

Our Editor, Mark Nelson was awarded Second Place at Quartzsite this month, in the judging of technical articles by the Special Congress Representing Involved Bulletin Editors. SCRIBE is a network of editors of lapidary publications. The article he authored was titled "Bulletin Standards For Exchanges".



If you know anyone who is not feeling up to par, has been sick or lost a loved one? On the silver lining side of things, do you know who has achieved a goal, won a personal victory, or just something that deserves recognition? The Pasadena Lapidary Society has a Sunshine Committee to send cards and words of comfort and support and congratulations to those members who are in need or are deserving of it. Notify Trudy Krose at 323-664-9598 or at mikedrose@roadrunner.com.



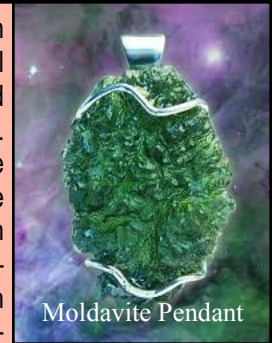
(Continued from page 1)

occurring Coesite was first found inside Meteor Crater (also called Barringer Crater) in 1960. In that same time scientists discovered sand-grain sized **diamonds** in the crater, likely formed as a result of a high pressure and temperature impact. In the 35-mile-wide Popigari crater in Siberia, the result of a huge impact 35 million years ago, Russian researchers unearthed polycrystalline diamond clusters reaching nearly half an inch across. Years later the mineral **Stishovite**, an even higher temperature, higher pressure polymorph of quartz, was found in the Arizona Crater



Arizona Coesite

of Moldauthein in Bohemia, Czech Republic, where it is found. The total amount of Moldavite scattered around the world is estimated at 275 tons. There are now only four moldavite mines that are in full operation in the Czech Republic. It is predicted that in less than ten years from now commercial Moldavite mining will come to an end. After this time, there will be virtually no appreciable amount of gem-grade Moldavite left in the ground.



Moldavite Pendant

Editor: Research sources for this article include Wikipedia.com

Tektites are being found at more gem and mineral shows. From the Greek tektōç or tektos (molten), they are natural glass rocks which most scientists argue were formed by the impact of large meteorites on Earth's surface. Tektites are typically black or olive-green and their shape varies from rounded to irregular. Among the names given to tektites is Bediasite, found around Bedias, Texas. Darwin Glass was first reported on Mount Darwin in Tasmania and later at Darwin Crater. Georgiaite tektites are found in two very small regions of the U.S., including one in the state of Georgia.



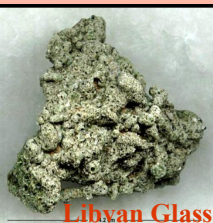
Tektites

Australite or Indochinite tektites are distinctly dark black, estimated to be 700,000 years old, and are found in the Australasian Tektite Strewnfield which includes the Indochinese peninsula.



Australite

Lechatelierite tektites from the Sahara Desert in Libya and Egypt, known as Libyan desert glass, are composed of almost pure silica - that is almost pure lechatelierite. Lechatelierite was probably formed by the impact of a meteorite 28 - 30 million years ago near the Gifl Kebir plateau in southwest Egypt. It has also been found in Coconino Sandstone at Meteor Crater in Arizona where it was puffed up to more than twice its size by steam and can now float on water. Lechatelierite may also form artificially, a unique example being the Trinitite produced by melting of quartz sand at the first nuclear bomb explosion at Trinity Flats, White Sands, New Mexico.



Libyan Glass

Trinitite



Trinitite

Moldavite, an olive-green glassy material, is a rarity at lapidary shows. It is sometimes cut and polished as an ornamental stone under the name of pseudo-chrysolite. It was named for the town

of Moldauthein in Bohemia, Czech Republic, where it is found. The total amount of Moldavite scattered around the world is estimated at 275 tons. There are now only four moldavite mines that are in full operation in the Czech Republic. It is predicted that in less than ten years from now commercial Moldavite mining will come to an end. After this time, there will be virtually no appreciable amount of gem-grade Moldavite left in the ground.

Editor: Research sources for this article include Wikipedia.com

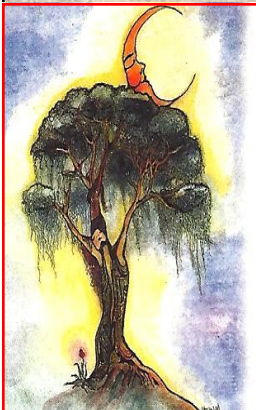


Amethyst Crystal

Amethyst is one of the most sacred and famous stones of all time. Previously abundant and now becoming scarcer are the giant cathedrals of Amethyst clusters, perfectly suitable to house a queen, fairies and nature spirits alike. It is a highly spirited stone, emitting various shades of purple, based on the mineral content of manganese and iron.

One observation I recently made was at the Quartzsite Gem and Mineral Show. Miners once presented numerous Amethyst cathedrals arriving by the container load. That reality is now becoming a shadow of bygone times. So cherish your Amethyst, the earth has limited resources!

..... Wendy Ansel, Rocks & Runes



Rocks & Runes

Your Place For Crystals

1006 N. Lima St.— Burbank, CA 91505
(818) 846-0108

We carry gemstones from A to Z.
Let us show you how to use gems and crystals for health as did the ancients.
Classes, Meditation, Cards of Destiny.
Tue-Sat. 11am-7pm, Sun 12pm-5pm
email: rocksandrunes@yahoo.com
web: www.rocksandrunes.com

Wendy Ansel

A Pasadena Lapidary Society Member



January Field Trip Report By Philip Lahr

In January, a some of us who spent the weekend at Quartzite met up a mountain range or two east of town to search the desert for treasure. Rex insisted he wasn't a local expert, but he had the copy of Gem Trails, brought along a couple carloads of friends, and drove the lead car - so we followed!



Quartzite At Sunset Photo by Philip Lahr

The first stop was an area noted for copper minerals south of Interstate 10 . We found many old excavations, great scenery, lots of interesting desert plant life, and some interesting copper mineralization in quartz veins.

Next stop was a series of bare dome shaped rocky hills north of the highway said to contain some fire agate. The agate was either clear or a rich reddish brown, and most was found as small pieces in the gravel at the bottom of the slopes and near the road. A few pieces of nice material were found and broken out of the host rock as well.

Continuing north, we parked in a wash at the base of some small steep rocky hills. The kids in the group immediately set out to climb the rocks and "conquer the mountain". Bits of chalcedony could be found all around the hills at this location with the better pieces found farther from the parking area. A few nice pieces of jewelry may eventually take shape from material collected here, and there was some nice material for grab bags and other show prizes collected at all three sites.

Field Trip Schedule for 2012

Jan 18-22 Quartzsite, AZ	Aug 11 L.A. Museum (day trip)
Feb 18-20 Stoddard Wells	Aug 31 - Sept 2 Snyder's Ranch
Mar 24-25 Ludlow/So. Cady Mtns:	Oct 6 Trona - Searles Lake
Apr 21-22 Castle Butte	Nov 3-4 Whittier Club Claim (Barstow)
Apr 28 Pala Tourmaline mines (fee required)	Nov 22-25 Stonewall Pass, NV
May 26-28 Lone Pine/Cerro Gordo Mine	Dec 8 Pinto Mountains copper minerals
Jun 16 Wrightwood (day trip): Actinolite and possibly rhodonite	Jan 19-20 Quartzsite
July 28 Palos Verdes (day trip):	Bonus: Numerous scouting trips open to all club members!

Bench Tips By Brad Smith

Question: In making the ends of a necklace, is there a standard for which side gets the clasp? I've been making pendants, and just randomly chose where to put the clasp.



Answer: Did you know that statistics say there are more right-handed people than left-handed? The percentages I found say that only 10 to 20% of the world's population is left-handed. I know that I have worked with several people who seem to work better with the left hand, but had been encouraged to use the right at an early age. Most of these folks could be ambidextrous, if they will let themselves, enjoying the best of both!

Most of those in the jewelry making industry design necklaces with the clasp on the right side, so that a right-handed person can easily take them on and off. The beauty of making jewelry yourself is that you are free to also create necklaces for those who are left-handed! Here is a marketing idea that I occasionally use: make a necklace that is either reversible, or easily changed, so you can switch the clasp from one end to the other in a few minutes. This is a great way to be able to customize your work, and customers love it!

Keep your eye on the ball! An early use of this phrase is said to refer to the Time Ball at the Royal Observatory in Greenwich, England. In the age of sail knowing the exact time was very important for navigation and to set their navigational chronometers which were often inaccurate. Ship captains on the Thames River gave instructions to "keep your eye on the ball". At 12.55 the ball is raised halfway up its mast and at 12.58 it is sent all the way to the top. At 1pm exactly, it falls.



Member - To - Member

Field Trip: We want to take a rock trip deeper into AZ this month, maybe in the Burro Creek area. We are planning on at least 4 days for this excursion. We have a few leads we might check out. Does anyone have any recommendations as to where to go? Would anyone like to go with us? Rex Nishimura (818) 720-6042 or at rexch8@yahoo.com.

Jim Gersbach is looking for a used faceting machine. Contact him at (626) 577-6773 or at tenomo@netscape.net.

Free furnace filters - 14"x25"x1". Check your filter's size and contact the editor.

Members are welcome to submit an ad for items wanted, for sale or free to other members. Submit a non-commercial ad of three lines to the editor by email at mnelsonair@aol.com or to the address on page 8.



Navarro's Creations
18 N. Mentor, Pasadena
(626) 577-2077



Designer and Unique Jewelry

Let Emilly Navarro create something for you! Bring her a picture or sketch of your dream design for a free quote. Open Monday - Saturday, 10am - 6pm



FIELD TRIPS

By Joe Goetz



Joe Goetz, Field Trip Chairman

**The February Fieldtrip
President's Weekend 18th through 20th 2012**

In the spirit of those in history who were explorers such as Daniel Boone and Davy Crocket we are going to explore! While there will be things to collect, we are going to explore and see if we can find other materials within a 30 mile radius of camp. Camp will be at the Stoddard Wells area shown on the map, below, marked by a star.

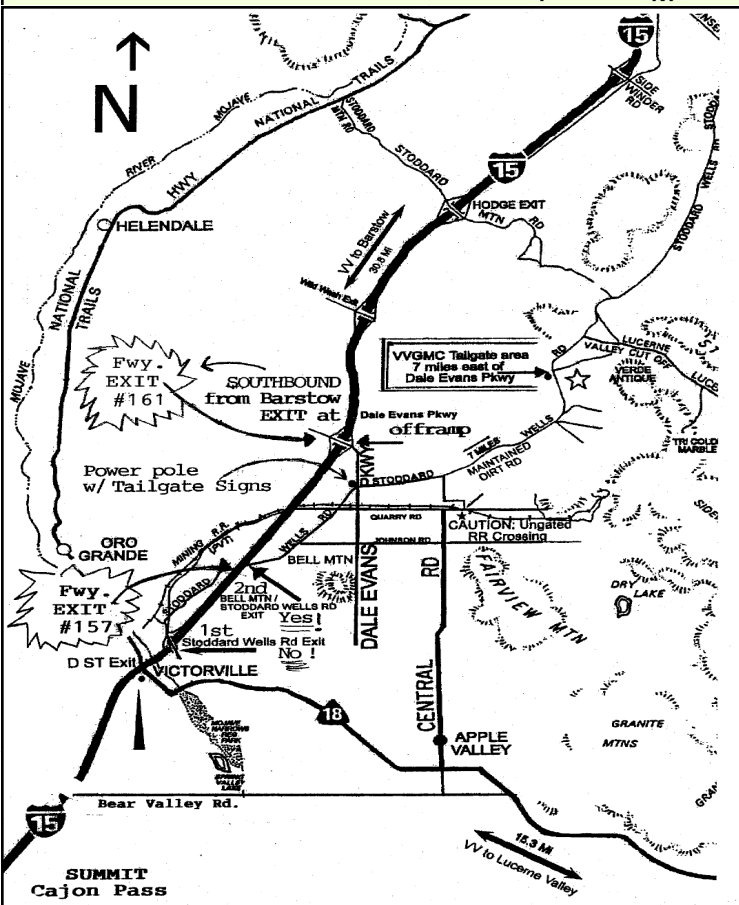
If you have old maps to collecting sites in the area, bring them. We'll see how many sites we can find and visit. Some people may say the area is worked out. Then again, 10 to 60 years of erosion can bring a lot of material to light.

As for the known materials... there is Verde Antique, Black jade with marcasite, tri colored marble, blue dolomite, "bug-eye" rhyolite and actinolite. There is also a talc mine to the west of camp. So there is actually quite a bit out there. I believe that they have begun working on the Barstow Road. If I'm remembering this correctly, there could be all sorts of material to be collected out there next to the road. The last time they improved a road people found all sorts of petrified palm and wood.

So come on out to the fieldtrip. If you don't camp, Victorville motels are just a few miles away. Or if you do camp you should know it's a dry camp, but supplies can be found in Victorville. Our exploring is much easier than that of Daniel Boone or Davy Crocket and probably more fun! Call or email me to let me know you are coming in case there is a change of plans or for detailed directions - 626-914-5030 or joenmar1@verizon.net

..... Lost somewhere in California

Wrong way Joe.....



FEDERATION NEWS

CFMS - California Federation of Mineralogical Societies

The CFMS has announced the dates for the 2012 Earth Science Seminar to be held at Soda Springs (Zzyzx) located approximately 50 miles northeast of Barstow, CA, off 1-15 at Zzyzx Rd. The date is April 1st through 8th. The Seminar is actually a hands-on instruction of jewelry and lapidary techniques where students really learn skills that they may not have an opportunity to learn elsewhere. This year's courses include Lapidary, Silver Fabrication, Beading, Soft Stone Carving & Scrimshaw, Advanced Wire Art, Wire Art, Field Trips, Precious Metal Clay, Faceting and Alternative Casting.

The cost for the week is \$375.00 per person and includes quarters or RV space, three meals per day, and classes. For more information and an application - see the October CFMS Bulletin at www.cfmsinc.org/newsletter/news2011/010oct11/newsoct11.pdf or call Marion Roberts at (209) 538-0197.

Save The Date: The 2012 CFMS Show and Convention will be held July 13-15, 2012 in Riverside, California.

Read the entire articles at: www.cfmsinc.org/newsletters

AFMS - American Federation of Mineralogical Societies

The AFMS' Endowment Fund drawing will be done a little bit differently this year. The top four prizes will be from Hi-Tech Diamond Company: #1 CABKING-6V3 MACHINE is a direct drive 6" diamond wheel grinding and polishing unit - value \$1,500; #2 SLANT CABBER MACHINE is an angled lap machine in a 8" diameter size - value \$600; #3 ALL-U-NEED MACHINE is a horizontal lap machine in a 6" diameter size - value \$490; #4 TRIM SAW MACHINE is a 6" machine with a diamond blade - value \$440.

Order tickets from Colleen McGann and, on your ticket, put the number of the machine you want. If your ticket is drawn - you will win that item. Tickets are \$5 each or 5 for \$20. Mail your check with your name, address, phone number and equipment in order of preference to Colleen McGann, PO Box 224; Santa Clara, CA 95052. Email questions to her at Colleen.mcgann@hds.com.

Next year the AFMS Convention will be held in Minnetonka, MN the weekend of July 26-29. Read the latest AFMS newsletter at: <http://www.amfed.org/news>



**FARRIN O'CONNOR
DESIGN**



146 W. Bellevue Drive, Pasadena

This is a true "hidden gem" for those interested in lapidary and jewelry work. A fully-stocked store with books, tools, beads and findings awaits you. Learn how to make jewelry from nothing-to-finished in their one-day classes. See upcoming classes and instructors at www.farrinoconnordesign.com/classes Or call them at (626) 796-5300. Free fenced parking.



(Continued from page 3)

Carolyn Duncan is looking for pleasant people to be greeters and grab bag sellers.

Raffle Donations - we need nice jewelry or lapidary creations for the Raffle. Currently we have an adult metal detector, a child's metal detector, a carved fish, an inlaid turquoise and coral letter opener and a lapis wire-wrapped necklace. If you are unsure of what would be a good prize, give Sylvia a call (626-792-9078) and she will help you out.

Treasure Wheel - Philip Lahr is coordinating this fun event, and needs volunteers to help spin the wheel! It is fast-paced and fun. Just 50¢ allows our guests to participate in a game and walk away with an interesting rock, fossil or other item. Every spin results in a win! They need donations for the game of polished, drusy or interesting rocks that children would enjoy.

Silent Auction - Dr. Ralph Fregoso has the spot of honor in the main hall. He needs volunteers to work with him refilling the auction table and also the donation of things like slabs, crystals, rock hammers, videos, books, tools and identified rock specimens that the public and other rock collectors would like to bid on.

Snack Bar - Helping Chris Kyte and his team prepare and sell simple food and drinks in the Snack Bar and helping to keep the area clean and litter-free is a great way to help make the show a success.

Membership Information Table - To my way of thinking, this is one of the most important and enjoyable jobs. This job simply gives our visitors someone to tell them how PLS can help them enjoy the hobby!

Most importantly, we need help with set up and take down. This year we are getting our stuff for the show out of storage a day early so we can do maintenance on the club cases. We will have about 8 hours on Thursday to do some sanding to get the rough spots smoothed out and, hopefully, we will be changing out some of the lights to utilize LED's that use less energy. We can use your help...put it on your calendar...Thursday, March 8th at 8:00AM.

Please let me know if you have a specific place that you would like to help during the show. You can call me at (909) 996-1784 or at mnelson-air@aol.com.

..... **Mark Nelson**



DELTA ONE LAPIDARY

WALDPOR, OREGON

Serving Lapidary Interests

Carrying quality machines by Covington, Graves, Inland, Grobet and Poly-Metric equipment.
Gemstone & Jewelry Supplies & Tools.

We offer great prices and the best technical assistance in the lapidary industry.

On-Line Order Catalog: www.deltaonelapidary.com. Don't see what you are looking for? Looking for technical or project advice? We sell quality materials, but we give our experience away freely! Call Jerry Hughes or Juli Dahl at (541) 563-7495 or email your question to Jerry@deltaonelapidary.com. Call (541) 961-6340 for orders from 9:00AM to 9:00 PM Pacific Time.



Decades of experience! Free Tech Support!

LOCAL ROCK AND GEM SHOWS:

1-29—QUARTZSITE, ARIZONA Wholesale and retail show; Desert Gardens RV Park; 1064 Kuehn St.; I-10 Exit 17; Wed. 9-6 daily; free admission; crystals, minerals, rough, polished, jewelry, lapidary equipment.

Look for the gems in the calendar on page 8.



17-26—INDIO, CA Annual show; San Geronio Mineral & Gem Society; Riverside County Fair & National Date Festival; Gem & Mineral Bldg, Bldg. #1, 46-350 Arabia St.; Fri. 10-10, Sat. 10-10, Sun. 10-10, Mon. 10-10; adults \$8, seniors \$7, students \$6, children (under 5) free.

21 - TREE OF LIFE Jewelry Design class by Jill Morrison. 12:30 - 5:30pm. All levels of experience can complete this beautifully pendant. Sawing, piercing and soldering. Cost is only \$86 at Farrin O'Connor Design. Call today to reserve a place! Information at www.farrinconnordesign.com/classes_winter_2011_2012.pdf See ad on page 6.



Please plan to attend one of the shows listed on this page, and wear your club badge when you do! - Editor

24-25—NORTHRIDGE, CA Annual show; Del Air Rockhounds Club; United Methodist Church; 9650 Reseda Blvd.; Fri. 3-9, Sat. 10-5; free admission; contact Julia Marin, (818) 886-7190; Web site: www.delairrockhounds.org

24-26—COSTA MESA, CA Wholesale and retail show; Gem Faire Inc.; OC Fair & Event Center; 88 Fair Dr.; Fri. 12-6, Sat. 10-6, Sun. 10-6; adults \$7, children (11 and under) free; jewelry, gems, beads, crystals, silver, rocks, minerals, exhibitors from all over the world. Free tickets at the PLS February meeting.

MARCH 10-11—PASADENA, CA 54TH Annual Show "Discover Rockhounding"; San Marino Masonic Hall, 3130 Huntington Drive, San Marino CA; Sat. 10-6, Sun. 10-5; Free admission, Free parking, Free rocks for kids, Faceted Gems, Jewelry, Minerals, Equipment, Books, Sand Scoop, Beads, Fossils, Petrified Wood, Lapidary Material, Supplies, Treasure Wheel, Grab Bags, Fabulous Raffle Prizes, Live Demonstrations, Silent auction. Contact Marcia Goetz, PO Box 5025, Pasadena, CA 91117 (626) 914-5030; e-mail: joenmar1@verizon.net.



A & A JEWELRY SUPPLY
DIVISION OF ADFA INC.

The single source supplier for jewelers and gemologists.
319 W. 6th St., Los Angeles, CA 90014 (213) 627-8004
Monday-Friday: 9 a.m. - 5:30 p.m. Saturday: 9a.m. - 4:00 p.m.

Supplies, displays, boxes, jewelry tools, precious metal, findings, fine jewelry, stones, settings and wedding bands. A wide variety of lighting, photography boxes, inventory software and product labeling supplies. Metalsmithing and lapidary supplies. Free catalog! www.aajewelry.com.

We carry the best quality tools and equipment available in the industry, at the best prices in the United States! We can confidently say that no supplier has lower prices. Jewelry and Lapidary clubs are welcome!

**February
2012**

The Pasadena Lapidary Society, Inc.
Bulletin Editor:
1475 Paseo Maravilla
San Dimas, CA 91773-3908

First Class Mail

**RETURN SERVICE
REQUESTED**



Pasadena, California
U.S.A.



Vice President - CFMS South

The Pasadena Lapidary Society is affiliated with the California and American Federations of Mineralogical Societies. Our editor is a member of the Special Congress Representing Involved Bulletin Editors.

February 2012

Sun Mon Tue Wed Thu Fri Sat

1 Board Meeting
2

3

4 The Day
The Music
Died 1959



5



Super Bowl Sunday

6 Ronald
Reagan
Born 1911



7 Full
Moon



8 Boy
Scouts
1910



9

10

11

12



Workshop

13

14



Happy
Valentine's
Day!

15



General Meeting

16

17

Battery
Inventor
Count Volta
born 1745



18



19



20



Presidents Day

21

22



George Washing-
ton Born 1732



23

24

25



26



27

28

29

February was named after the Latin term februum, which means purification, via the purification ritual Februa held on February 15 (full moon) in the old lunar Roman calendar.