

ROCKHOUND RAMBLINGS

SEPTEMBER 1, 2011

THE NEWSLETTER OF THE PASADENA LAPIDARY SOCIETY, PASADENA CALIFORNIA



INSIDE THIS ISSUE

<i>President's Message</i>	2
<i>Club News</i>	2
<i>Ed's Corner, Workshop, Harry and Arlene Billheimer</i>	3
<i>Californite, West Nile Virus</i>	4
<i>Billheimer, Fake Jade, Member to Member</i>	5
<i>Field Trips, Joint Field Trip Report Federation News</i>	6
<i>Silver Filled Wire, Light Bulb Ban, Shows & Events</i>	7
<i>Calendar of Monthly Events</i>	8

CALIFORNITE was first described in 1904 by George Kunz, a mineralogist for Tiffany and Company as a new ornamental gemstone in the American Journal of Science. A variety of vesuvianite, it is sometimes called American jade, California jade or Happy Camp jade.

A mining report entitled **GOLD, SILVER, COPPER, LEAD, AND ZINC IN THE UNITED STATES IN 1911** describes a deposit near Watts Creak northeast of Sanger, California. "Lenses, nodules, and streaks of Californite are irregularly scattered through

Continued on page 4



President's Message



How time flies! Here it is almost time for the kids to go back to school! We have been lucky in having a cooler than usual summer and I look forward to an even cooler fall so we can get back out to collect material.

The nominating committee

has met and is still putting together the candidates for club officers for the next two years. Please consider volunteering to fill a position. There are jobs as easy as Meeting Host, who asks people to bring refreshments for the monthly club meeting. Another is Vice President, who fills in for the president and arranges the presentations for the club meetings. Our club cannot function without the participation of every member!

The committee to rewrite our club bylaws and our operating regulations is also meeting and will be presenting their recommendations to the club in the next month or two.

In September there will be two workshops, on the 11th and 17th so come on out and work on your projects. I look forward to seeing everyone at the upcoming workshops and field trips!

... Chris Kyte, President

Meeting and General Club Information

Officers

Chris Kyte, President
(626) 794-0519
ckyte60@att.net

Cheryl Lopez, Secretary
(626) 351-6283
rclopez002@verizon.net

Mark Nelson, Treasurer
(909) 996-1784

FAIR USE NOTICE. This publication may contain copyrighted material the use of which has not been specifically authorized by the copyright owner.

We are making such material available in our efforts to advance the educational understanding of the amateur jewelry fabrication and rock collecting hobbies.

We believe this constitutes a 'fair use' of any such copyrighted material as provided for in section 107 of the U.S. Copyright Law.

If you wish to use material from this publication for commercial or purposes of your own that go beyond 'fair use', you must obtain permission from the copyright owner.

Newsletter Articles or corrections should be sent to the editor: **Mark Nelson**, 1475 Paseo Maravilla, San Dimas, CA, 91773. (909) 996-1784 or to mnelsonair@aol.com

August Board Meeting
by Mark Nelson, Treasurer

Officers present: C. Kyte, M. Nelson. Absent: C. Lopez. .
Chairs/Members present: V. Cliffe, S. Cliffe, J. Goetz, M. Goetz, M. Kyte, E. Imlay, D. Wilson. Absent: D. Kelly. Upcoming workshop programs and field trips were scheduled. There was a discussion about the bylaws update and ways to enhance the club's activities..

August Meeting

CFMS President Jim Brace-Thompson, who instituted the CFMS Year Of The Child, described the children of our community as "a perishable commodity" because they grow up and our opportunity to get them interested in a wholesome activity



such as rock collecting will pass. Members enjoyed prizes donated by Sylvia and Vern Cliffe and \$60 was collected.

September Meeting

Ed Imlay, the Education Committee Chair is scheduled to present his Rockhound Talk which has captivated young audiences at schools throughout Los Angeles County.

Membership Information and Meeting Locations

Membership per calendar year is \$20, \$15 for a second adult member in the same house. Junior members and third or more members at the same house are \$10. Initiation fee is \$2.50 per person and membership badges are \$7.50. Renewals are due by the December General Meeting. Mail membership checks to P.O. Box 5025, Pasadena CA 91117-0025.

Board Meetings: 7:00pm on the first Wednesday of the month at the One West Bank at the northeast corner of Santa Anita and Foothill in

Arcadia. All PLS members are welcome to attend.

General Meetings: 7:00 PM each month on the third Wednesday at the Pasadena Central Library at 285 E. Walnut Street. Guests are welcome!

Field Trips are scheduled each month. Refer to the bulletin for date, location and information.

Workshops are offered in our well-equipped shop in Pasadena to all members for a nominal fee - normally on

the 2nd Sunday of each month. Refer to the bulletin for hours and the calendar for date changes. Eye protection and closed-toe shoes are mandatory for all participants. Call a board member for the location.

Workshops and field trips are for adult members and children with direct parental supervision.

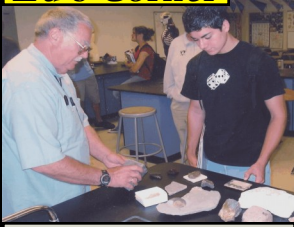
The Annual Club Show is held the second weekend of March at the Masonic Hall, 3130 Huntington Drive, San Marino.



Ed's Corner

EDUCATIONAL OUTEACH

BY ED IMLAY



Ed Imlay at local schools

Members are encouraged to display any items of general interest, workshop projects, material from locations of recent or upcoming field trips, and the birthstone of the month - Sapphire. If you have a rock you are trying to identify - set it out with a paper asking "What Is This"? It's a great challenge for other members!

With school starting, ask your child's teacher if Ed can be scheduled to present his Rockhound talk to the class. It is a hands-on program, the children leave with a rock of their own and it is so popular that many schools schedule him back year after year.

**Welcome
New Members !!**



Share the joy and knowledge of the lapidary and jewelry hobby. Please invite your friends and neighbors to become members of the Pasadena Lapidary Society!

WORKSHOP

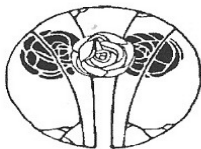
TWO WORKSHOPS this month! 1. Sunday (September 11th) from 1:30 to 5:30 PM. 2. Saturday (September 17th) from noon until 5pm.

On Saturday the 17th, Kathleen Griffy will begin her series of classes in bead weaving. At this class she will teach an odd-count technique for making a bracelet with a peyote stitch and peyote toggle clasp. Those attending should bring: 6 gms Color A #8 seed beads, 6 gms Color B #8 seed beads, 6 lb test fireline thread (color to go with bead choice), Size #12 needles, thread conditioner, scissors or snips, working container for your beads to keep them separate and easy to access. She will have handouts for attendees, complete with a bead graph to follow. This is going to be a beginner introduction to the peyote stitch but anybody who beads can bring their projects along and come join us. The more, the merrier!

Materials are available at the San Gabriel Bead Company. Kathleen can be contacted at cakgriffy@yahoo.com or at 626-319-3367.

2012 PLS Show dates have been confirmed! March 10 and 11, 2012. The first show planning meeting will take place at 10am on Saturday, September 17th at Drew Wilson's home - preceding the workshop. All members are invited. — *Marcia Goetz, Show Chair.*

THE SAN GABRIEL BEAD COMPANY



Create your own jewelry!

325 E. Live Oak Ave.
Arcadia CA 91006
(626) 447-7753
www.beadcompany.com

Hours: Tue-Thurs 12-9pm, Fri 12-6pm, Sat 10am-6pm, Sun 12-5pm

beads, books, gourds, tools, workshops, metals & friendly advice



Arlene Billheimer

MAKING A DIFFERENCE

Harry and Arlene Billheimer

Occasionally you meet a person who, because of their energy and leadership, makes a real impact on those around them. Arlene and Harry Billheimer were such people. Those who knew them say that they "gave so much to so many".

They joined the Pasadena Lapidary Society in 1958. Their son, David, relates how he and his father were impressed by George Snyder, David's Boy Scout Leader and PLS member. This was at a Boy Scout camping event near Stoddard Wells that turned into a rock field trip. Following this, father and son restored an old 1945 Willys MB army truck to use for seeking rocks out in the desert. David says he learned from his parents how, when out on field trips, to select only the specimens that they would use for projects and leave the rest for other collectors to find and enjoy!

Arlene taught jewelry making and Harry was an avid photographer. They were passionate about exhibiting and were the ones to demonstrate at club meetings how to put together an exhibit case - with lining, risers, mounts for specimens, labels, and showing what could be used and what was unacceptable - and all the little things that go in to putting together an exhibit. Harry was the PLS show chairman for decades! He and Arlene were key to the show's success for many years. Friends remember fondly seeing Arlene and Harry at a show in the 80's with kids all around them. Arlene and Harry were demonstrating rock

(Continued on page 5)



Sunshine: Cheryl Lopez is recovering from an illness that had limited her participation. Ed Imlay was at the August meeting showing off his scar from knee surgery.

Dave Kelty reports that Junior Member Ceres Black was a real hit as an actress in the August musical performance of SEUSSICAL at the Candlelight Pavilion Dinner Theater in Claremont

If you know anyone who is not feeling up to par, has been sick or lost a loved one? On the silver lining side of things, do you know who has achieved a goal, won a personal victory, or just something that deserves recognition? The Pasadena Lapidary Society has a Sunshine Committee to send cards and words of comfort and support and congratulations to those members who are in need or are deserving of it. Notify the editor or Cheryl Lopez at (626) 351-6283 or at rclopez002@verizon.net.



WEST NILE VIRUS

by Mark Nelson, Emergency Medical Technician

West Nile Virus (WNV) is a concern for rock collectors during field trips and knowledge of the causes and prevention can help us all enjoy our hobby more fully! WNV is a mosquito-borne disease that was originally found in Africa. In 1999, it was detected in the eastern United States. Since then the virus has spread throughout the United States and is well established in most states. WNV is spread by the bite of a mosquito that becomes a carrier ("vector") when it feeds on infected birds or squirrels. Infected mosquitoes can then spread WNV to humans and other animals when they bite.

California's first case of human infection for 2011 occurred in Santa Barbara County in July. Infection with WNV can produce serious, life threatening, illness and should be taken seriously. While most people (80%) who are infected with WNV will not show any symptoms, the other 20% will display symptoms. In its mildest form, these symptoms can include fever, headache, body ache, nausea, vomiting, and sometimes swollen lymph glands or a skin rash on the chest, stomach and back. Symptoms generally last for just a few days, although even previously healthy people have been sick for several weeks.

Residents are cautioned to take precautions now to avoid mosquito bites and eliminate standing water sources to break the mosquito life cycle. The CDC and the California Department of Public Health recommend the "4 D's":

- DEET - Apply insect repellent containing DEET, picaradin, oil of lemon eucalyptus or IR3535 (according to label instructions) on exposed skin when you go outdoors. Repellants keep the mosquitoes from biting you. DEET can be used safely on infants and children 2 months of age and older.
- DRESS - Wear clothing that reduces the risk of skin exposure to mosquito bites. Wear long-sleeves, long pants and socks when outdoors. Mosquitoes may bite through thin clothing, so spraying clothes with repellent will give extra protection. Don't apply repellents containing permethrin directly to skin. Do not spray repellent on the skin under your clothing.
- DAWN AND DUSK - Mosquitoes bite in the early morning and evening so it is important to wear repellent at this time. Make sure that your doors and windows have tight-fitting screens to keep out mosquitoes. Repair or replace screens with tears or holes.
- DRAIN - Mosquitoes lay their eggs on standing water. Eliminate all sources of standing water on your property, including flower pots, old car tires, rain gutters and pet bowls. If you have a pond, use mosquito fish (available from your local mosquito and vector control agency) or commercially available products to eliminate mosquito larvae.

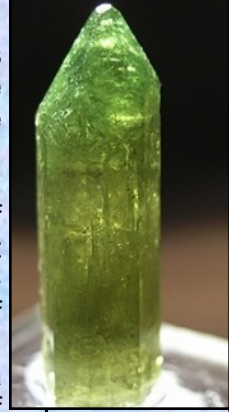
You can help track down the West Nile Virus by reporting all dead birds and squirrels, which often die as a result of the WNV infection. Call 1-877-747-2243. To find the WNV reporting agency for other states call the U.S. Center for Disease Control, which was the source of the information contained in this article, at (800) CDC-INFO (232-4636) or go online to www.cdc.gov/westnile.

(Continued from page 1)

the gem lead. The streaks range from less than an inch to several inches thick and the nodules and lenses also range from the same small size to nearly 3 feet thick."

Californite was formed in the contact zone of hot magma and limestone. It was first observed as vesuvianite in xenoliths of limestone in or adjacent to the lava flows of Mt. Vesuvius in Italy. Californite is found in similar deposits as skarns where magma has intruded limestone. Some varieties of vesuvianite that are of gem quality used to be referred to as idocrase, a Greek word meaning 'mixed' because of its crystal habit that can mimic many other minerals.

The finest specimens of Californite or vesuvianite are in the crystal form with the more common form being semi-opaque and 'massive'. Specimens are found in California near Crestmore, Georgetown, along Indian Creek in Siskiyou County and in Butte and Fresno counties. U.S. vesuvianite crystals are also found in Nevada, Arkansas, Vermont and in New York. At the Jeffrey Mine, Asbestos City, Quebec, vesuvianite forms loose aggregates of pale green crystals.

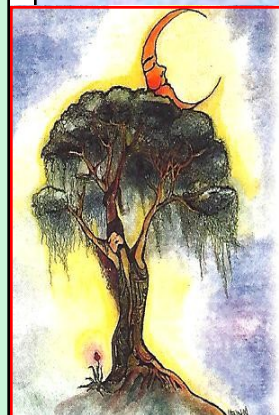


Jeffrey Mine Specimen



The hardness of Californite of 6.5 to 7 on the Mohs scale puts it on par with many other conventional gems used in jewelry. It is partly the rarity and the lack of knowledge about Californite or vesuvianite that has kept this gem stone on the sidelines. But for gem enthusiast and those looking for gems with excitement it will make a great attraction. If you are looking for good quality to facet limit your search to 1.5 carat or smaller pieces.

Photos courtesy of www.irocks.com and www.davidkjoyceminerals.com and are used with their permission.



Rocks & Runes

Your Place For Crystals

1006 N. Lima St.— Burbank, CA 91505
(818) 846-0108

We carry gemstones from A to Z. Let us show you how to use gems and crystals for health as did the ancients. Classes, Meditation, Cards of Destiny. Tue-Sat. 11am-7pm, Sun 12pm-5pm
email: rocksandrunes@yahoo.com
web: www.rocksandrunes.com

Wendy Ansel

A Pasadena Lapidary Society Member



(Continued from page 3)

carving and encouraging the kids to take a piece of soft stone, a file and to "do something with it."

When they saw how pitiful the Mineral & Gem Section of the Los Angeles County Fair was - they took charge and built it into something memorable. Arlene went to all the clubs in the Los Angeles area and pleaded with them to participate in the Fair - reminding them that it would help each club gain more members - and it worked! She was successful in this endeavor for nineteen years. Unfortunately, when she retired in 2001 because of health, there was no one to take over her huge task and the mineral & gem section was discontinued.

Both Harry and Arlene served in all the PLS positions, including as our President, and were active in the CFMS. Arlene became the CFMS President in 1991. In 2002 Harry and Arlene Billheimer were named as the Pasadena Lapidary Society's **Rockhounds Of The Year** in recognition of their forty-four years of dedicated service.

Arlene passed away in 2008 and Harry left us this year. They are remembered by their four children - David, Thomas, Ken and Nancy, six grandchildren, and three great grandchildren and a grateful Pasadena Lapidary Society. We could not serve our members and the community today without the energy and vision of Harry and Arlene Billheimer. May their dedication and service to the society continue to serve as an example to us all!

The family will have a sale of Harry and Arlene's rocks and equipment on Saturday, September 10th from 8am to 3pm at 3163 N. Maiden Lane, Altadena. Wear your member badge! — Editor



Member - To - Member

Jim Gersbach is looking for a used faceting machine. If you know of one available please let him know at (626) 577-6773 or at tenomo@netscape.net

Linda Nelson is looking for a small, used, mining ore cart. (909) 592-1322 or lnelsn@verizon.net.

Members are welcome to submit an ad for items wanted, for sale or free to other members. Submit a non-commercial ad of three lines to the editor at the address on page 2.

Identifying Fake Jades - Description & eBay Examples

By Molly Kalafut <http://molly.kalafut.org/jade/fake.html> June 2009

Many merchants and antique dealers have a tendency to call any green-looking stone "jade", when it may really just be serpentine, glass or even plastic. Here are a few ground rules and warnings about fake jades: 1. Just because something is green doesn't make it "jade". 2. Location names are almost a dead giveaway that something is not jadeite or nephrite.

Note About eBay: Be very careful when purchasing jade from sellers on eBay! As illustrated below in examples, some dishonest or ignorant sellers are more than willing to use the word "jade" in many misleading ways. Try to make sure the seller specifies "jadeite" or "nephrite" and offers a guarantee. At any given time there are dozens to hundreds of fake jades for sale. Beware! Listed here are a number of common fakes and frauds.

"Afghanistan jade" or "Afghan jade" is a variety of serpentine called bowenite. It can vary from white to light and dark green and can occur with black or pink.

"African jade" (shown at right) is actually a green variety of garnet called "grossular" and not jade.



Not surprisingly, "Agate jade" (shown at left) is in fact agate and not jade. Sometimes the color varieties are misrepresented and called "red agate jade".

"Amazon jade" is actually a variety of green feldspar called "amazonite" and is not jade.



"Mexican Jade", shown at left, is usually just onyx or calcite that is dyed green.

"Happy Camp Jade" is actually made of Californite (see cover story) from the Happy Jack mine - not jade.



Navarro's Creations
18 N. Mentor, Pasadena
(626) 577-2077



Designer and Unique Jewelry

Let Emily Navarro create something for you! Bring her a picture or sketch of your dream design for a free quote. Open Monday - Saturday, 10am - 6pm



FIELD TRIPS

By Joe Goetz



This month we will escape the heat and head for Gaviota and Refugio Beaches for fossil whalebone! The fieldtrip is scheduled for Saturday, September 24th and Sunday, September 25th. Refugio Beach is a 2 hour drive from Pasadena. We will be meeting Saturday at Refugio Beach at 10:30AM, then at Gaviota Beach at 1PM for the 1:58PM low tide. On Sunday we will have the option of reversing the order and to search some new areas. In the past we have found petrified whale bone and fish fossils on these beaches, so come and join us for a family friendly excursion to the beach!

There is a \$10 per car fee for the beach (paying at one covers both). Dress in layers - as it may be cold and we will get wet. Bring food and beverages. Bring a bucket or bag for your findings, maybe a sturdy knapsack. Small gardening hand tools can come in handy to pry up petrified bone.

I will have details and maps at the September 21st Monthly Meeting. If you will be attending or are looking for more information, please call me at 626-914-5030 or by email at joenmar1@verizon.net.

Somewhere in California
..... going the wrong way ... Joe Goetz

FEDERATION NEWS

CFMS - California Federation of Mineralogical Societies

CFMS/PLS FIELD TRIP REPORT

By Philip Lahr

CFMS sponsored a collecting trip to the Greenhorn Mountains July 29 through 31. The group camped at and filled Panorama Campground, a nearly unimproved site ("primitive campground") about 8 miles north of Alta Sierra - west of Lake Isabella. I left home at 5 am and arrived at the campsite just as the first group pulled out for the quartz claim at 9. Being in unfamiliar and remote mountains, I was thankful to have done a little research and printed out the relevant USGS quad sheets before leaving home. The road to the claim was passable with only one muddy rutted section that threatened me with the prospect of spending the day digging out my small 2WD pickup. Later in the day a guy made it across the same spot in a sedan.

Wildflowers were in full bloom and the vistas along the drive were great. The quartz outcrop was impressive, a rock face at least 50 feet wide and high with quartz varying from white opaque to rich clear pink, some almost purple. It was quite a challenge to break off good pieces with hand tools, but some talented masons extracted boulders and split them into pieces that only a strong determined man (person, amazon...??) could carry back up to the road. There were also lots of material on the slope below - although it took lots of pawing through the bushes to find the better stuff.

The potluck was delicious with lots of chile, salads and a great soup. I counted about 40 people around the tables at meal time. Most were from the Oxnard or Ventura clubs. There were quite a few kids and young adults in the mix and it was a friendly, welcoming group. About the time dinner was finishing, the

clouds let loose and everybody ran for cover. This cancelled the planned evening rockhounding expedition. A few got umbrellas and ponchos and hung out by the fire and then, as the rain faded, the crowd grew again.

Sunday morning the rain held off long enough to get breakfast in and start tearing down camp, but started before another rock collecting trip could be started. Most of the group left toward the south, but I decided to explore a little and headed north toward Johnsondale.

Visibility was low and there were a couple spots where the road appeared ready to slide to the bottom of the hill, but the driving went well. From the swollen Kern River, I continued taking the long way home by heading east up Sherman Pass and then down to Kennedy Meadows. At Kennedy Meadows, I saw a very interesting orange to red banded rock being used for landscaping at a restaurant called Grumpy Bear's. I wish I had asked where to get it. Although not cab quality, it might be interesting cut into larger pieces or thick slabs. Maybe that will be another reason to go back.Philip

AFMS - American Federation of Mineralogical Societies

The California Federation of Mineralogical Societies (CFMS) submitted the highest-rated club bulletins in each category to be entered into the **AFMS Bulletin Contest**. This included the bulletin of the Pasadena Lapidary Society - *ROCKHOUND RAMBLINGS*. At the PLS August Meeting, CFMS President Jim Brace-Thompson announced that from over 600 clubs nationwide, Rockhound Ramblings was awarded the 2nd Place Trophy in its class. President Brace-Thompson presented editor Mark Nelson with the trophy before the group of members and guests. Jim and his wife, Nancy were a great hit with the members.

Jim and Nancy brought a copy of the PLS August Bulletin with tourmaline on the cover and showed rough and faceted pieces of tourmaline they collected from the Pala mines.



Editor Mark Nelson, left with CFMS President Jim Brace-Thompson



FARRIN O'CONNOR DESIGN

146 W. Bellevue Drive, Pasadena

This is a true "**hidden gem**" for those interested in lapidary and jewelry work. A fully-stocked store with books, tools, beads and findings awaits you. Learn how to

make jewelry from nothing-to-finished in their one-day classes. See upcoming classes and instructors at

www.farrinoconnordesign.com/classes

Or call them at (626) 796-5300. Free fenced parking.



What is Sterling Silver Filled Wire?

By Rose Marion, WireSculpture.com

Our silver filled wire is 10% sterling silver that is bonded to a red brass alloy center. This 1/10 silver filled wire is made with .925 sterling silver. This means your wire will look its best even after you cut, polish, and bend it into a bracelet or cabochon frame. Sterling Filled Wire is hundreds of times thicker than Silver Plated Wire - but still a fraction of the price of regular Sterling! You can treat silver filled wire just like your usual gold filled, sterling silver or Argentium® silver wire. Hammer, pickle, or solder away - we know it will hold up. The core of the wire is made of brass. This means that the core will show on cut ends, but because of this your jewelry will have some incredibly different effects. If you're typically allergic to plated jewelry then you'll find silver filled wire a welcome relief. All of the things you love about your usual wire, you'll love about silver filled wire, at a fraction of the cost!

Editor: Sterling Silver Filled Wire is available at www.WireSculpture.com Phone: 1-877-636-0608. This wire and filled silver plate is also available at www.riogrande.com or by phone at 800-545-6566. Call to request a catalog.

California Incandescent Light Bulb Ban Takes Effect

Reported by Noaki Schwartz, Huffington Post 1/23/2011

LOS ANGELES — The brightest bulb in most homes for more than a century is fading toward darkness this year as California turns out the light on the century-old incandescent. Beginning Jan. 1, the state began phasing out certain energy-sucking bulbs, federal standards the rest of the country will enact next year. Manufacturers will no longer make the traditional 100-watt bulb and stores will eventually sell out of current supplies. Consumers will have to choose from more efficient bulbs that use no more than 72 watts, including halogen incandescents, compact fluorescents and light-emitting diode, or LED, bulbs. The act requires new bulbs to use 25 to 30 percent less energy beginning in 2012 nationally – starting with the 100-watt bulb. By 2014, other incandescent bulbs, including the 75-, 60- and 40-watt, will also be phased out across the country. Some specialty bulbs, however, will continue to be available. Consumers will still be able to get smaller lights such as yellow bug lights and aquarium bulbs.

Light bulb manufacturers said they haven't gotten any reports of customers hoarding 100-watt bulbs yet, though that may change once supplies begin to dry up and word gets out.

Nick Reynoza, of Royal Lighting in Los Angeles, said "it's a shame the transition comes at a time when alternatives are so much more expensive. Four incandescents are \$1.00, the halogens are \$5.99 and the LED are like \$20." "It's not really an option – you have this or you don't get anything," he said.

"These standards will help cut our nation's electric bill by over \$10 billion a year and will save the equivalent electricity as 30 large power plants," said Noah Horowitz - a senior scientist with the Natural Resources Defense Council. "That translates into a whole lot less global warming pollution being emitted."

LOCAL ROCK AND GEM SHOWS:

16 - PASADENA, CA: Friday, 12:30 - 5:30pm at FARRIN O'CONNOR DESIGN. Instructor: Jill Morrison's class on COPPER EDGED JEWELRY: \$86. Learn Jill's fundamental approach to framing strips of richly embellished silver, copper, or brass using a fine gauge copper sheet. With strategically placed folds, your edge captures the textured piece, accenting its luxurious surface. Students will practice several basic metal fabrication techniques while producing a choice of cuff bracelets, pendants, and earrings. Some will be able to create more than one piece of jewelry in this fun workshop. **All experience levels.** . Reservations required. See ad on page 6.

Look for the gems in the calendar on page 8.



10 - ALTADENA, CA: Billheimer Lapidary Sale. Details on page 4.

Please plan on attending one of the shows listed on this page, and wear your club badge! - Editor

10-11—DOWNEY, CA: Annual show; Delvers Gem & Mineral Society' Women's Club of Downey, 9813 Paramount Blvd.; Sat. 10-6, Sun. 10-4; free admission; more than 20 dealers, displays, demonstrations, books, grab bags; contact Guynell Miller, 7315 Cloverlawn, South Gate, CA 90280-2819, (562) 633-0614; e-mail: guynellallen@sbcglobal.net; Web site: [http](http://www.gemfaire.com)

30-2—DEL MAR, CA: Wholesale and retail show; Gem Faire Inc.; Del Mar Fairgrounds, 2260 Jimmy Durante Blvd.; Fri. 12-6, Sat. 10-6, Sun. 10-5; adults \$7 weekend pass, children 11 and under free; jewelry, gems, beads, crystals, silver, rocks, minerals; contact Yooy Nelson, (503) 252-8300; e-mail: info@gemfaire.com; Web site: www.gemfaire.com

San Gabriel Bead Company - September Events

See their ad on page 3

Bead Sale & Silk Road Treasures Trunk Show - 20% off all beads Thursday-Sunday, September 1st to 4th

Serendipity Salvage Trunk Show - Friday Sunday, September 9th to 11th

The Mad Beader Trunk Show - Saturday, September 10th



The single source supplier for jewelers and gemologists.

319 W. 6th St., Los Angeles, CA 90014 (213) 627-8004

Monday-Friday: 9 a.m. - 5:30 p.m. Saturday: 9a.m. - 4:00 p.m.

Supplies, displays, boxes, jewelry tools, precious metal, findings, fine jewelry, stones, settings and wedding bands. A wide variety of lighting, photography boxes, inventory software and product labeling supplies. Metalsmithing and lapidary supplies. Free catalog. www.aajewelry.com.

We carry the best quality tools and equipment available in the industry, at the best prices in the United States! We can confidently say that no supplier has lower prices. Jewelry and Lapidary clubs are welcome!

September
2011

The Pasadena Lapidary Society, Inc.
Bulletin Editor:
1475 Paseo Maravilla
San Dimas, CA 91773-3908

First Class Mail



Pasadena, California
U.S.A.

RETURN SERVICE
REQUESTED



Vice President - CFMS South

The Pasadena Lapidary Society is affiliated with the California and American Federations of Mineralogical Societies. Our editor is a member of the Special Congress Representing Involved Bulletin Editors.

September 2011

SUN	MON	TUE	WED	THU	FRI	SAT
				1 WWII begins in 1939 	2 WWII Ends in 1945 	3
4	5 Labor Day 	6	7 Board Meeting 	8	9 1850 California Statehood 	10 Billheimer Sale Downey Rock & Gem Show 
11 Patriot Day  Workshop 	12 	13	14	15	16 National Collect Rocks Day 	17 Workshop Kathleen Griffey's bead class 
18	19	20	21 Membership Meeting 	22 1920-Band Aid Invented 	23 	24 Field Trip to Refugio and Gaviota Beaches 
25 Field Trip to Refugio and Gaviota Beaches 	26	27 First Passenger Train. 1825 In England. 	28	29	30 Del Mar Gem Show Weekend 	