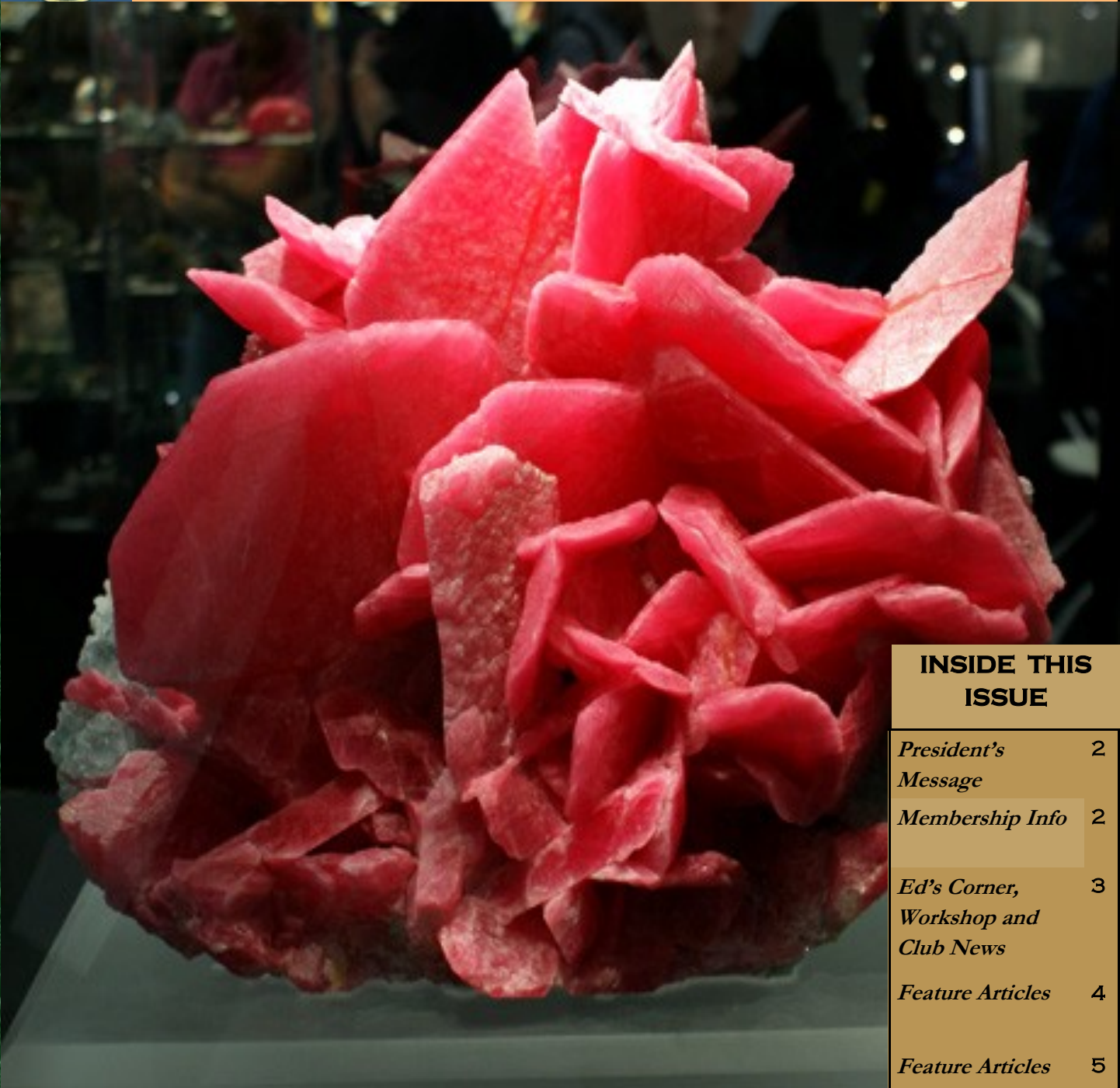


ROCKHOUND RAMBLINGS

JULY 1, 2011

THE NEWSLETTER OF THE PASADENA LAPIDARY SOCIETY



INSIDE THIS ISSUE

<i>President's Message</i>	2
<i>Membership Info</i>	2
<i>Ed's Corner, Workshop and Club News</i>	3
<i>Feature Articles</i>	4
<i>Feature Articles</i>	5
<i>Field Trips, Federation News</i>	6
<i>Articles and Shows</i>	7
<i>Calendar</i>	8

RHODOCHROSITE - This is an extremely large - outstanding - Rhodochrosite from the Wudong Mine of Wuzhou, Guangxi Zhuang, China. The specimen was displayed at the booth of Collector's Edge at the Tucson Gem and Mineral Show in 2011 and was one of the highlight cases of the show. The color and crystal size is magnificent! This specimen has been dubbed "The Empress of China" and has a similar counterpart known as the "Emperor of China" which was also on display at the show.

Continued on page 4



President's Message



Hello again gentle-members! I hope that you are enjoying the summer so far!

As a lifelong resident of Southern California I resent the newly converted who say "Thank goodness it's finally hot and sunny". Those of us who have grown up in this climate welcome the 'June gloom' and any onshore flow that mitigates the heat. I only have to remember the time we tried to collect honey onyx in July and it was 115

degrees at Kramer Junction. That is why we curtail our field trips in July and August - it's just not healthy. We do hope to have some day trips to cooler areas like Pacific Palisades - and CFMS is leading a trip to the Green Mountains to find rose quartz.

Don't forget that we are having our Silent Auction and Ice Cream Social at our July club meeting! Please bring your favorite type of ice cream and some rocks, old equipment, slabs or whatever you want to donate to the club fund raiser. If you call or email me or the editor we will pick up your donation.

In addition I want mention that we are

convoking a committee to nominate new club officers who will take over the reins in January for the next two years. Please be thinking about what post you could fill - as we depend on the kindness of members to keep our club at peak efficiency. There is a position for everyone's skill and available time - from librarian or historian to recording secretary to president and vice president. The committee will be calling members soon to solicit your participation.

Thanks in advance for everything that all of you, our members, do to support our great organization!

... Chris Kyte, President

Meeting and General Club Information

Officers

Chris Kyte, President
(626) 794-0519
ckyte60@att.net

Cheryl Lopez, Secretary
(626) 351-6283
rclopez002@verizon.net

Mark Nelson, Treasurer
(909) 996-1784
mnelsonair@aol.com

FAIR USE NOTICE. This publication may contain copyrighted material the use of which has not been specifically authorized by the copyright owner.

We are making such material available in our efforts to advance the educational understanding of the amateur jewelry fabrication and rock collecting hobbies.

We believe this constitutes a 'fair use' of any such copyrighted material as provided for in section 107 of the U.S. Copyright Law.

If you wish to use material from this publication for commercial or purposes of your own that go beyond 'fair use', you must obtain permission from the copyright owner.

Newsletter Articles or corrections should be sent to the editor: **Mark Nelson**, 1475 Paseo Maravilla, San Dimas, CA, 91773. (909) 996-1784 or to mnelsonair@aol.com

June Board Meeting

by Cheryl Lopez, Secretary

Our Treasurer's proposed budget expenses will be reviewed at the July board meeting. Whether or not to continue the bulletin in its current format was discussed. Input is needed from the board and members. Sixteen people have given commitments for club T-Shirts. Orders will be sent in July. The idea of spending \$250 for a year of Directors & Officers Insurance

was discussed and more information is sought. Nelson, Imlay and Cliff are updating the by-laws.

June Meeting

Martin & Jill Milas' presentation was so informative that all other business was suspended. Martin gave a detailed evaluation of gold pans, techniques, and mining options - with a good amount of anecdotal information from his personal experiences. An actual panning exhibition was in place at the east entrance to the meeting room.

July Member Meeting

Silent Auction and Ice Cream Social! Please bring items to auction, your checkbook and your favorite flavor of ice cream! All proceeds to benefit the club and our activities. **Please invite your friends!**

Wear your member badge!

Membership Information and Meeting Locations

Membership per calendar year is \$20, \$15 for a second adult member in the same house. Junior members and third or more members at the same house are \$10. Initiation fee is \$2.50 per person and membership badges are \$7.50. Renewals are due by the December General Meeting. Mail membership checks to P.O. Box 5025, Pasadena CA 91117-0025.

Board Meetings: 7:00pm on the first Wednesday of the month at the One West Bank at the northeast corner of Santa Anita and Foothill in

Arcadia. All PLS members are welcome to attend.

General Meetings: 7:00 PM each month on the third Wednesday at the Pasadena Central Library at 285 E. Walnut Street. Guests are welcome!

Field Trips are scheduled each month. Refer to the bulletin for date, location and information.

Workshops are offered in our well-equipped shop in Pasadena to all members for a nominal fee - normally on

the 2nd Sunday of each month. Refer to the bulletin for hours and the calendar for date changes. Eye protection and closed-toe shoes are mandatory for all participants. Call a board member for the location.

Workshops and field trips are for adult members and children with direct parental supervision.

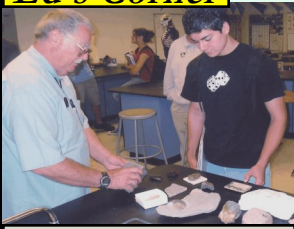
The Annual Club Show is held the second weekend of March at the Masonic Hall, 3130 Huntington Drive, San Marino.



Ed's Corner

EDUCATIONAL OUTEACH

BY ED IMLAY



Ed Imlay at local schools

Last month I visited three classes of fourth grade students at John Muir Elementary in Glendale.

DISPLAY TABLE - There was a great display table last month, including a number of Somis fossils - de-scaled and polished by Chris Kyte; a section of flagstone with dinosaur footprints by Mark Nelson; a display board of photos from Laura Glenn's "rock-moving party" by Trudy Krose, a piece of San Gabriel Canyon granite from Lisa Griffy and several "What Is This" pieces from the membership.

Members are encouraged to display any items of general interest, workshop projects, material from locations of recent or upcoming field trips, and the birthstone of the month. If you have a rock you are trying to identify - set it out with a paper asking "What Is This?". It's a great challenge for other members!

WORKSHOP

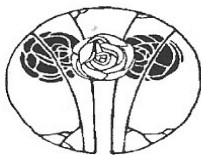
The workshop is continuing its new schedule of the 2nd Sunday of each month. Be sure to refer to the club calendar on page 8 to confirm the date.

Chris Kyte and Mark Nelson repaired our two large rock saws and Chris found three nice new trim saw blades on e-bay.

Thanks to Laura Glenn, and the sweat of our members, there is a lot of new material in the "Free Rocks" pile for members. Come and select a couple for your project! Members are available to help you with ideas and techniques. If you are looking for a particular rock, contact Carolyn Duncan at (909) 593-2781 or at gem.quest@yahoo.net.

Workshop hours are from 1:30 until 5PM. Parking is on the west side of street or in the church parking lot down on the corner on the east side of the street.

THE SAN GABRIEL BEAD COMPANY



Create your own jewelry!

325 E. Live Oak Ave.
Arcadia CA 91006
(626) 447-7753
www.beadcompany.com

Hours: Tue-Thurs 12-9pm, Fri 12-6pm, Sat 10am-6pm, Sun 12-5pm

beads, books, gourds, tools, workshops, metals & friendly advice

**Welcome
New Members !!**



Please welcome new member Michelle Matti of Glendale!

Michelle accompanied us on the June field trip to Somis and came back with both fossils and a renewed dedication to our hobby. Glad to have you, Michelle!

Your Opinion Counts!

This year our bulletin was judged to be the best bulletin in it's class in the state. However, the cost to the club for publishing our bulletin, Rockhound Ramblings, is \$2.13 per issue, or about \$25.56 per address per year. This year we expect to offset this cost by the support of our paid advertisers in the amount of \$600, leaving a deficit of \$900 to be covered through member dues, the July Auction, meeting raffles and the Annual Show. The Board Of Directors is considering options of either returning to a four page photocopied black & white format, converting to a PDF email format, raising dues, increasing the productivity of the Annual Show, or seeking a benefactor to help offset the cost.

Your input is needed! Please let the board know if you would prefer to keep the current format or would be OK with a smaller black & white format, how you would like to receive it (mail or email) and if you have an opinion of how the bulletin should be funded. Send your opinion to the club at Pasadena Lapidary, P.O. Box 5025, Pasadena, CA 91117-0025 or email it to the Secretary at rclopez002@verizon.net. Thank you!



Sunshine:

Ed Imlay will be undergoing knee replacement surgery on July 7th. After this second 'bionic' knee there will be no stopping Ed on field trips!

Mark Nelson's brother died in Arizona following an illness.

Carolyn Duncan and Charlotte Bane lost their best friend - a cat named Tye to a coyote attack. Sandie and Tony Fender lost one of their dogs and adopted a new husky.

We extend our support to them during this trying time.

Do you know anyone who is not feeling up to par, has been sick or injured, lost a loved one? Or on the silver lining side of things, do you know anyone who has achieved a goal, won a personal victory, or just something that deserves recognition? The Pasadena Lapidary Society has a Sunshine Committee to send cards and words of comfort and support and congratulations to those members who are in need or are deserving of it. Call Cheryl Lopez at (626) 351-6283 or at rclopez002 @verizon.net and let her know what needs to be done!



Continued from page 1

Rhodochrosite is one of the prettiest and desirable of all minerals. Its deep red and hot pink crystals are extremely sought after and good crystals command extremely high prices. Especially desirable are the beautiful intensely colored rhombohedrons from the Sweet Home Mine in Colorado. This mine provided a fascinating discovery in the 1960's of some of the largest and most stunning Rhodochrosite crystals ever found. The largest Rhodochrosite crystal, called the "Alma King", is a single 15 cm crystal that was found in the Sweet Home Mine in 1992.

A very interesting occurrence of this mineral is in Argentina, where Rhodochrosite forms stalagmites and stalactites in the 13th century Inca Silver mines. They formed from precipitating water dripping from the manganese-rich rock inside the ancient mine tunnels, and kept on growing over the centuries into large stalagmites. These stalagmites are beautifully banded with concentric growth layers and are often sliced and polished into slabs for collectors.



Rhodochrosite belongs to the calcite group of minerals, a group of related carbonates that are isomorphous with one another. They are similar in many physical properties, and may partially or fully replace one another, forming a solid solution series. All members of the calcite group crystallize in the trigonal system, have perfect rhombohedral cleavage, and exhibit strong double refraction.

When Rhodochrosite is exposed to the atmosphere, it may develop a thin film of manganese oxide on its surface. This may slightly darken the color of a specimen. Rhodochrosite sometimes alters into black manganese oxides (such as Pyrolusite, Manganite, and Psilomelane), and black manganese oxide stains are usually associated with Rhodochrosite.

This article is used with the permission of the author, Hershel Friedman, of www.minerals.net. Our readers are urged to visit this fascinating website and learn about other interesting minerals. The cover photo is by Herman Friedman.

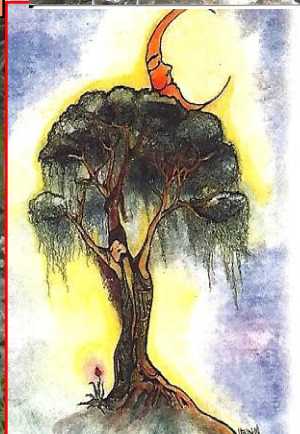
THE FUTURE OF ROCKHOUNDING

THE FUTURE OF ROCKHOUNDING



Collecting fossil clams at Somis

First field trip to Laura Glenn's home



Rocks & Runes

Your Place For Crystals

1006 N. Lima St.— Burbank, CA 91505
(818) 846-0108

We carry gemstones from A to Z.
Let us show you how to use gems and crystals for health as did the ancients.
Classes, Meditation, Cards of Destiny.
Tue-Sat. 11 am-7pm, Sun 12pm-5pm
email: rocksandrunes@yahoo.com
web: www.rocksandrunes.com

Wendy Ansel



THE FUTURE OF ROCKHOUNDING A Project For Our Junior Members

HOW TO MAKE CRYSTALIZED CANDY

by Anne Marie Helminstine Ph.D

<http://chemistry.about.com/od/growingcrystals/ht/b1sugarcystal.htm>

It's easy to grow your own sugar crystals! Sugar crystals are also known as rock candy since the crystalized sucrose (table sugar) resembles rock crystals and because you can eat your finished product. You can grow beautiful clear sugar crystals with sugar and water or you can add food coloring to get colored crystals. It's simple, safe, and fun. Boiling water is required to dissolve the sugar, so adult supervision is recommended for this project.

DO NOT ATTEMPT THIS WITHOUT YOUR PARENT'S APPROVAL AND HELP

WHAT YOU NEED:

1 cup water; 3 cups table sugar (sucrose); Clean glass jar; Pencil or butter knife; Rough string or yarn; Pan or bowl for boiling water and making solution; Spoon or stirring rod.

HERE'S HOW:

1. Gather your materials.
2. You may wish to grow them using a seed crystal (a small crystal to weight your string and provide a surface for larger crystals to grow onto). A seed crystal is not necessary as long as you are using a rough string or yarn.
3. Tie the string to a pencil or butter knife. If you have made a seed crystal, tie it to the bottom of the string. Set the pencil or knife across the top of the glass jar and make sure that the string will hang into the jar without touching its sides or bottom. However, you want the string to hang nearly to the bottom. Adjust the length of the string, if necessary.
4. Boil the water. It is best to boil the water in a pan on a stove. Be very careful removing it to avoid getting splashed.
5. Stir in the sugar, a teaspoonful at a time. Keep adding sugar until it starts to accumulate at the bottom of the

6. container and won't dissolve even with more stirring. This means your sugar solution is saturated. If you don't use a saturated solution, then your crystals won't grow quickly. On the other hand, if you add too much sugar, new crystals will grow on the dissolved sugar and not on your string.
7. If you want colored crystals, stir in a few drops of food coloring.
8. Pour your solution into the clear glass jar. If you have undissolved sugar at the bottom of your container, avoid getting it in the jar.
9. Place the pencil over the jar and allow the string to dangle into the liquid.
10. Set the jar somewhere where it can remain undisturbed. If you like, you can set a paper towel over the jar to prevent dust from falling into the jar.
11. Check on your crystals after a day. You should be able to see the beginnings of crystal growth on the string or seed crystal.
12. Let the crystals grow until they have reached the desired size or have stopped growing. At this point, you can pull out the string and allow the crystals to dry. You can eat them or keep them. Have fun!
13. If you are having trouble growing sugar crystals, you may want to try some special techniques. A video tutorial showing how to make rock candy is also available on the website.
14. If you need more help go to the Website and there is lots of help.

Article courtesy of the April 2011 edition of 'Roc Chips, Timpanagos Gem and Mineral Society, Springville Utah.



Navarro's Creations
18 N. Mentor, Pasadena
(626) 577-2077



Designer and Unique Jewelry

Let Emilly Navarro create something for you! Bring her a picture or sketch of your dream design for a free quote. Open Monday - Saturday, 10am - 6pm



FIELD TRIPS

By Joe Goetz



This month we will again be joining CFMS for a Field Trip - this month to the Greenhorn Mountains. It will be on July 29-31, 2011 Fri -Sun. We will be searching for Epidote, garnet, scheelite, tungsten and rose quartz.

This trip is to be a weekend field trip, but I know that many can only do a Day Trip, so the CFMS is scheduling collecting on Saturday starting at 10 am to accommodate those who come for the day.

Friday will be the "Drive to the Campsite and Set Up" day. It should take about 3.5 to 4 hours to drive to the campsite from Pasadena, so get up early and drive safe. Late afternoon on Friday we will head out for the Epidote and Garnet source. There will be some hiking up hill on this trip, but mostly on dirt forest roads. As it gets dark we will collect Scheelite/Tungsten. If you have a short wave ultraviolet light - bring it to help identify these minerals.

Saturday morning we will head out to the Rose Quartz area at about 10am.

Sunday morning, we will hit the Rose Quartz again, to accommodate those driving up that morning, and will start early (about 9am) as we need to pack up and head for home that afternoon.

Directions: Panorama Dry Camp, 7 miles north of Greenhorn Mountain County Park off Highway 155 in the Sequoia National Forest. Lat: N35° 48.51', Long: W118°34.34' (<http://www.co.kern.ca.us/parks/greenhorn.asp>) or e-mail Rob Sankovich for a map.

Information: The campsite is a Dry Site. No Water, No Hook-ups. If you are camping overnight, you will need to bring water for drinking and cleaning. I recommend filling a five gallon water cooler jug with your tap water and carrying bottled water for drinking while hiking and collecting. This is a Pack In / Pack Out trip. We are responsible for our own trash and we need to set an example as RockHounds. Fire permits will be required - Rob will be getting one, and we will need at least one more permit for the group. They can be bought in Bakersfield on the way up to the campsite - at the BLM office in Bakersfield at 3801 Pegasus Drive (7:30 am - 4:15 pm on Friday, Phone: 661-391-6000) and at the BLM's Kernville Office at 105 Whitney Road Kernville, Telephone: 760-376-3781.

What to Bring: bug spray, warm clothes for the cool nights, light clothes for the sunny afternoons, hiking shoes, sunscreen, large brim hat, shovel, rock hammer or pick, gad or chisel, sledges, collecting bags, buckets, day pack, eye protection, sturdy shoes, drinking water, trash bags, fire wood, and the usual stuff you bring when you camp.

Confirm your attendance with Rob Sankovich of CFMS Field Trips South in case there are changes to the plan at 805-494-7734 or rmsorca@adelphia.net

Somewhere in California
..... going the wrong way ... Joe Goetz

FEDERATION NEWS

CFMS - California Federation of Mineralogical Societies

This month's CFMS Newsletter contained an article written by our editor entitled: BULLETIN STANDARDS FOR EXCHANGES. This article suggested that bulletin editors adopt several standards when formatting their bulletins for sharing among editors of other clubs, as our club's editor does. The text of the article and other Federation news can be read on-line at:

www.cfmsinc.org/newsletter/news2011/007jul11/newsjul11.pdf

AFMS - American Federation of Mineralogical Societies

Rock Hound State Park Update

The June edition of this bulletin repeated the news article by John Martin of AFMS that Rockhound State Park was no more. We are glad to report that this information was incorrect. The June 23rd Deming, NM, Headlight Newspaper reports: **Rockhound State Park Issues Final Plans: Name, rock collecting will stay the same** (By Matt Robinson - Headlight Staff). He reports that "You could call it a victory of public opinion over government regulation".

New Mexico State Parks released its final management plan for Rockhound State Park Tuesday and it does not include the previously proposed and controversial recommendations to change the park's name and to prohibit rockhounding the collecting of rocks. The state had taken public comments and recommendations for the plan until April. In late March, a public meeting was held, which was attended by about 80 concerned residents. Cabinet secretary John Beamis was in attendance at the meeting and has subsequently had an instrumental role in the process. MaryKay Brady, of the Friends of Rockhound State Park volunteer group said "I think this is one of the few times, what is the expression, you can't beat city hall," she said, brimming with excitement. "I think in this case the outpouring of support was just so overwhelming, the state had to come up with a different plan." The newspaper article can be read by searching www.demingheadlight.com for "Rockhound State Park News".



FARRIN O'CONNOR DESIGN



146 W. Bellevue Drive, Pasadena

This is a true "hidden gem" for those interested in lapidary and jewelry work. A fully-stocked store with books, tools, beads and findings awaits you. Learn how to make jewelry from nothing-to-finished in their one-day classes. See upcoming classes and instructors at www.farrinoconnordesign.com/classes Or call them at (626) 796-5300. Free fenced parking.



Member - To - Member

Members are welcome to submit an ad for items wanted, for sale or free to other members. Ads are usually limited to three lines for three months a year and may not be of a commercial nature. There is no cost for the ad. Submit your message by the 15th of the month to the Editor who reserves the right to edit or refuse any submissions.

Tip: Metal cigar tubes are a great way to store saw blades; go into a cigar store and ask - they usually have some lying around.

I want to cut a piece marcasite from the hills above Agoura. How do I decide which way to slab the rock? I've already made one cut with disappointing results. I was expecting a sagenite type finish. Do sagenite needles run in any one direction on a rock or do they run any which way they please? Thanks. Rex

REMINDERS

Ed Imlay reminds us that:

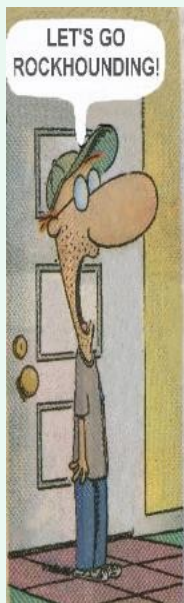
DISPLAY TABLE: Members are invited to bring and to display any items of general interest to the meetings (July excepted), especially: workshop projects, material from locations of recent or upcoming field trips, and the birthstone of the month.

BIRTHSTONE: The birthstone of July is the Ruby.

The word Ruby comes from the Latin "ruber," meaning red. It is a variety of the mineral Corundum and is the second hardest mineral - after Diamond. It comes in a variety of colors, and is considered a Sapphire in any color except red, which is designated as a Ruby. Called the "Rajnapura" or King of Gems by ancient Hindus, July's birthstone is among the most highly prized of gems throughout history. The Ruby was considered to have magical powers, and was worn by royalty as a talisman against evil. It was thought to grow darker when peril was imminent, and to return to its original color once danger was past—provided it was in the hands of its rightful owner!

Rubies were thought to represent heat and power. Ancient tribes used the gem as bullets for blowguns, and it was said that a pot of water would boil instantly if a Ruby was tossed into it. Ground to powder and placed on the tongue, this crystal was used as a cure for indigestion.

For more information, visit the source of this information about the Ruby at: www.about-birthstones.com.



LOCAL ROCK AND GEM SHOWS:

9-10 CULVER CITY: 50th annual show; Culver City Rock & Mineral Club; Culver City Veterans Memorial Auditorium, 4117 Overland Ave.; Sat. 10-6, Sun. 10-5; free admission; demonstrations, jewelry classes, club displays and exhibits, youth games, more than 35 dealers, gems, jewelry, minerals, fossils, tools, beadwork, castings, wire-wrap, carvings, glass-work, rough slabs, polished cabs, door prizes, free specimens for junior rockhounds; contact Robert Thirlaway, (310) 462-2269; e-mail: fiestaofgems@gmail.com; Web site: www.culvercityrocks.org.

Look for the gems in the calendar on page 8.



9-10 SYRACUSE, NEW YORK: 45th annual show, "Gems Along the Erie Canal: A Diamond Celebration"; Gem & Mineral Society of Syracuse; New York State Fairgrounds, Center of Progress Bldg., I-690; Sat. 10-6, Sun. 10-4; competitive exhibits, lectures, workshops, demonstrations, kids' activities, minerals, fossils, beads, metaphysical stones, AMFS and EFMLS Convention meetings July 6-8; contact Cathy Patterson, (315) 638-8817; e-mail: cathy.patterson@verizon.net; Web site: www.gmss.us.

9-10 ARCADIA: Jennifer Morris Show at San Gabriel Bead Company. 325 E. Live Oak Avenue. (626) 447-7753. Saturday 10am-6pm, Sunday 12noon-5pm.

Please plan on attending one of the shows listed on this page, and wear your club badge! - Editor

15 PASADENA: TREE OF LIFE Design Class. 12:30 - 5:30pm FARRIN O'CONNOR DESIGN. Instructor: Jill Morrison. Students develop one of the most important skills in jewelry (hand work) as they work to complete this beautifully designed pendant. Cost: \$86. Reservations required. 146 W. Bellevue Drive, Pasadena (626) 796-5300 www.farrinconnordesign.com.

16-17 SANTA MONICA: Wholesale and retail show; Gem Faire Inc.; Santa Monica Civic Auditorium, 1855 Main St.; Sat. 10-6, Sun. 10-5; adults \$7 weekend pass, children 11 and under free; contact Yooy Nelson, (503) 252-8300; e-mail: info@gemfaire.com; Web site: www.gemfaire.com.

23 ARCADIA: AngieAnn Domino Pendant Show at San Gabriel Bead Company. 325 E. Live Oak Avenue. (626) 447-7753. Saturday 10am-6pm, Sunday 12noon-5pm.



The single source supplier for jewelers and gemologists.

319 W. 6th St., Los Angeles, CA 90014 (213) 627-8004 Monday-Friday: 9 a.m. - 5:30 p.m. Saturday: 9a.m. - 4:00 p.m.

Supplies, displays, boxes, jewelry tools, precious metal, findings, fine jewelry, stones, settings and wedding bands. A wide variety of lighting, photography boxes, inventory software and product labeling supplies. Metalsmithing and lapidary supplies. Free catalog. www.aajewelry.com.

We carry the best quality tools and equipment available in the industry, at the best prices in the United States! We can confidently say that no supplier has lower prices. Jewelry and Lapidary clubs are welcome!

**July
2011**

The Pasadena Lapidary Society, Inc.
Bulletin Editor:
1475 Paseo Maravilla
San Dimas, CA 91773-3908

First Class Mail



Pasadena, California
U.S.A.

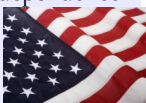












**RETURN SERVICE
REQUESTED**



Vice President - CFMS South

The Pasadena Lapidary Society is affiliated with the California and American Federations of Mineralogical Societies. Our editor is a member of the Special Congress Representing Involved Bulletin Editors.

JULY 2011

SUN	MON	TUE	WED	THU	FRI	SAT
					1	2
	JULY IS NATIONAL ICE CREAM MONTH					
3	4 Independence Day 	5	6 Board Meeting 	7	8 Liberty Bell cracks 1835 	9 
10 	11	12	13	14	15 	16 
17 	18	19	20 Auction Ice Cream 	21	22	23 
24 Amelia Earhart Day 	25	26	27	28	29	30 
31 Ramadan begins 	Please donate and attend the Auction on the 20th at the Pasadena Library! A great way to support our club!					