

ROCKHOUND RAMBLINGS

JANUARY 1, 2011

THE NEWSLETTER OF THE PASADENA LAPIDARY SOCIETY



*Color
Field Trip Photos
On
Page 4*

FEATURE ARTICLE

**JEWELRY
POLISHING TIPS**
Page 5

**NEW
MEETING
TIME & PLACE**

DETAILS ON PAGE 3

GREEN RIVER FISH FOSSILS

These fossils of the fish species *Knightsia* are common items at rock shows such as the Pow Wow (this month's field trip) or at Cloud's Jamboree. Fish like these, and other species like insects and plant leaves, are preserved by the millions in the creamy shale of the Green River Formation in Wyoming, Utah and Colorado. **Continued on page 4**

The Pasadena Lapidary Society returns to Pasadena!

New meeting dates, times and location. Read the full story and get all the information inside on page 3.



PASADENA PUBLIC LIBRARY

INSIDE THIS ISSUE:

<i>President's Message</i>	2
<i>Membership Info</i>	2
<i>Ed's Corner, Work-shop and Annual Club Show</i>	3
<i>Field Trip Report - Wiley's Well</i>	4
<i>Feature Articles</i>	5
<i>Field Trip, Federation News</i>	6
<i>Parking, Shows</i>	7
<i>Calendar</i>	8



President's Message



Happy New Year to one and all! I'm sure that you all had a great time celebrating the holidays and are now working on your New Year's Resolutions. I hope that you included the determination to volunteer to help out at the show!

Dave Svenson will be giving a talk at our January meeting and please

note the information about our new meeting hall.

In a related matter, you need to join our Yahoo group so we can email you any updates you need to know about. Instructions are on page 3. Please do so today!

Your input is appreciated regarding field trips you would like the club to sponsor (page 6). The trip for this month will be to Quartzsite during the annual "Pow

Wow" and, if you have never been, you should really go. It is a great show with scads of vendors from all over the world. There are also field trips put on by the local club and lots of neat places to collect in the area. I recommend "Gem Trails of Arizona" as a resource book. Even if you don't go during the Pow-wow there are still 3 or more great mineral fairs during other times of the month. I hope to see all of you out there!

... *Chris Kyte, President*

Meeting and General Information

Officers

Chris Kyte, President
(626) 794-0519
ckyte60@att.net

Cheryl Lopez, Secretary
(626) 351-6283
rclopez002@verizon.net

Mark Nelson, Treasurer
(909) 996-1784
mnelsonair@aol.com

FAIR USE NOTICE. This publication may contain copyrighted material the use of which has not been specifically authorized by the copyright owner.

We are making such material available in our efforts to advance the educational understanding of the amateur jewelry fabrication and rock collecting hobbies.

We believe this constitutes a 'fair use' of any such copyrighted material as provided for in section 107 of the U.S. Copyright Law.

If you wish to use material from this publication for commercial or purposes of your own that go beyond 'fair use', you must obtain permission from the copyright owner.

December Board Meeting by Cheryl Lopez

Items of note include the decision to start our regular meetings at 7pm., a treasurer's report showing total assets of \$11,265.58, changes in the workshop procedures, selection of a new meeting location, and approval to order show raffle tickets and to purchase a table for one of the workshop saws. — CL

January Meeting

Phenomena: "The Stone, the Light and You".

Have you ever wondered why a star ruby has that star or what causes the fire in fire opal? How can I recognize interesting optical phenomena, like asterism, chatoyancy, interference and iridescence, and what causes them?

Graduate Gemologist David

Svenson shares the amazing world of phenomenal stones in a presentation at the January meeting.

JANUARY MEETING

DATE: Wed. Jan 19

LOCATION: Sierra Madre Masonic Lodge

STARTS AT 7:00 PM

Membership Information and Meeting Locations

Membership per calendar year is \$20, \$15 for a second adult member in the same house. Junior members and third or more members at the same house are \$10. Initiation fee is \$2.50 per person and membership badges are \$7.50. Renewals are due by the December General Meeting. Mail membership checks to P.O. Box 5025, Pasadena CA 91117-0025.

Board Meetings are held at 7:00pm on the first Wednesday of the month at the One West Bank at the northeast corner of Santa

Anita and Foothill in Arcadia. All PLS members are welcome to attend.

General Meetings are held on the third Wednesday of the month at 7:00pm at the Sierra Madre Masonic Lodge, 33 E. Sierra Madre Blvd, Sierra Madre. Guests are welcome!

Field Trips are scheduled each month. Refer to the newsletter for weekend and location.

Workshops are offered to all members for a nominal

fee - normally on the first Sunday of each month at Drew Wilson's home. Refer to the newsletter for hours and the calendar for date. Location is 252 Bella Vista in Pasadena.

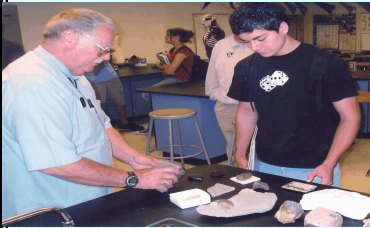
Workshops and field trips are for adult members and children with direct parental supervision. Eye protection and closed-toe shoes are mandatory for all participants.

The Annual Club Show is held the second weekend of March at the Masonic Hall, 3130 Huntington Drive, San Marino.

Newsletter Articles or corrections should be sent to the editor: **Mark Nelson**, 1475 Paseo Maravilla, San Dimas, CA, 91773. (909) 996-1784 or to mnelsonair@aol.com



Ed's Corner



Ed Imlay at local schools

**EDUCATIONAL
OUTREACH**

Visits to the second grade classes at K. L. Carver School in San Marino have been scheduled for January 24 and 25, 2011.

DISPLAY TABLE

For the January meeting, please display any items of general interest, especially: workshop projects, material from locations of recent or upcoming field trips, and the birthstone of the month: Garnet.

WORKSHOP

By Drew Wilson

Our monthly workshop will be one week later than normal, on January 9th, due to the New Year's Weekend Holiday. The time is from 1:30 pm until 5:00 pm (no early birds, please).

The Board has responded to the concerns of members who have expressed concern that they are unable to use a club saw to cut a slice of their new rock - and the rising cost of our high performance saw blades. Starting with the January Workshop, members will find new guidelines in effect to help remedy the situation. There will be nominal charges for cutting rock slabs (\$1 to \$2 depending on the size of the saw), and a sign-up sheet so everyone can have a turn at the saws. Complete details are available at the workshop. As always, safety practices, including eye protection and closed-toe shoes are mandatory for all participants. A Workshop Host will be available to answer any of your questions.

NEW MEETING LOCATION

As the Masons prepare to sell the aging Masonic Lodge in Sierra Madre the Board has been looking for a location to hold our monthly membership meetings. Starting with the February meeting we have secured a meeting hall at the Main Pasadena Library. Eventually we will have a regular night of the month to meet on, but until then we will be meeting on various nights of the month. Watch the bulletin for the dates, but here is the current schedule.

Location: 285 E. Walnut Street, Pasadena
Times: 7 PM to 9 PM

January 26th Wednesday	April 27th Wednesday
February 24th Thursday	May 23rd Monday
March 28th Monday	June 22nd Wednesday

See page 7 for directions and parking.

Members - Please patronize our advertisers !

ANNUAL CLUB SHOW

By Chris Kyte

We will only have the January and February workshops to make on our preparations so please come on out and create a prize or two for the raffle! We also need help at the workshop stuffing the grab bags. I am going to call on every member to help in some way to make this year's show a community and financial success. We need help in these areas:

Selling raffle tickets. I'm asking every member to sell \$100 worth of raffle tickets. This is a make-or-break time for our club's finances.

Raffle Donations of nice jewelry or lapidary creations for the Raffle.

Treasure Wheel & Silent Auction - Rudy Lopez and Mark Nelson are working on something new this year - a Treasure Wheel and a Silent Auction - both fast-paced and fun. They need donations for the wheel of polished, drusy or interesting rocks that children would enjoy, and identified rock specimens that the public and other rock collectors would like to bid on. They also need help from you, your friends and family to work the booth - spin the wheel and refill the auction items.

Snack Bar. Helping me prepare and sell food and drinks in the Snack Bar.

Front Door greeters, raffle ticket sales and grab bag give-aways at the entry door.

Membership Information Table. To give out club information, answer questions and sign up new members.

Please let me know if you have a specific place that you would like to help during the show. Call or email me at the numbers listed on page 2. **I appreciate it !!**

YAHOO GROUP SIGN UP - Please sign up today! Just type the following address into your web browser and follow the steps to join the group.

http://groups.yahoo.com/group/PLS_RockHounds

THE SAN GABRIEL BEAD COMPANY



Create your own jewelry!

325 E. Live Oak Ave.
Arcadia CA 91006
(626) 447-7753
www.beadcompany.com

Hours: Tue-Thurs 12-9pm, Fri 12-6pm, Sat 10am-6pm, Sun 12-5pm

beads, books, gourds, tools, workshops, metals & friendly advice

Fossils, Continued from page 1

The formation, that contains some 60 vertebrate fish fossils, consists of deposits that once lay at the bottom of three large, warm lakes during the Eocene Epoch (56 to 34 million years ago). A framed Green River Fossil Fish is a unique and attractive addition to your home's décor.



Field Trip Photos



Field Trip Report

by Mark Nelson

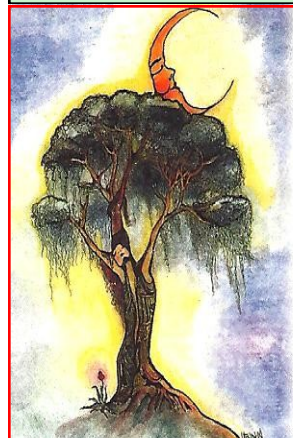
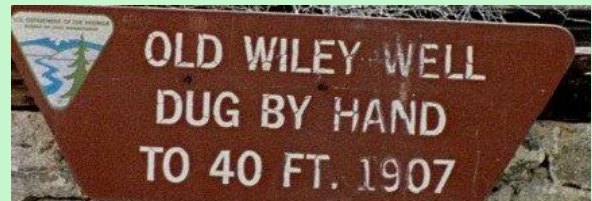
The Whittier and Pasadena clubs combined their November Field Trip with that sponsored by CFMS and hosted by the Orange Belt Mineralogical Society. It was at Wiley's Well over the Thanksgiving weekend and was lead by CFMS field trip leaders Adam Dean and Robert Sankovich.. The weather was rockhound perfect - cool, clear mornings that became t-shirt warm.

On Thursday we were guided by Rob to search for Bay Laurel petrified wood by the Colorado River. We then had a potluck Thanksgiving dinner with all the trimmings.

Friday, Adam Dean and Matt Boeck led a group to find the Paisley Agate and to the Straw beds for nodules/geodes, agate and for psilomelane. Rob led a group to the opal mine to dig for fire agate. Most of our group elected to search for quartz crystals where Rex Nishimura and his family found some nice ones. While driving to the chalcedony wash we came upon Lynn and Ron Buchko, of the San Diego club, who's car was disabled by a faulty fuel pump. Rudy Lopez and I managed to tow their car back to the interstate where AAA was able to get them help in time to return to the collecting fields by the end of the day.

On Saturday we all went out collecting nodules, geodes and chalcedony in the Chuckwalla Mountains in the morning and in the afternoon Jerry and Kathy Turner led us to a site where we collected agate at a nice exposed horizontal cap seam only 2½ miles from camp!

Sunday we went back to the wash below the Opal Hill Mine and explored the area. Sylvia Cliffe found a slope that was completely covered with chalcedony of various shades of white, red and brown. It was windy that day and we were all glad to get back to camp and have soup in our campers. All agreed that a good time was had that weekend! Mark



Rocks & Runes

Your Place For Crystals

1006 N. Lima St.— Burbank, CA 91505
(818) 846-0108

We carry gemstones from A to Z.
Let us show you how to use gems and crystals for health as did the ancients.
Classes, Meditation, Cards of Destiny.
Tue-Sat. 11am-7pm, Sun 12pm-5pm
email: rocksandrunes@yahoo.com
web: www.rocksandrunes.com

Wendy Ansel

A Pasadena Lapidary Society Member



TUMBLING TIPS

By
Industrial Screen Company

We have included various lapidary tips and suggestions when polishing your stones by tumbling. If you have a tumbler with a rubber barrel that needs to be relined, or any other rubber coated item, send an e-mail to:

sales@industrialscreen.com in Casper, Wyoming.

When getting started in the rough grit stage, check to see that no edges on a chip or slab taper off to almost nothing. Use a tile nipper to chip off the thin edges because this stone will not tumble into a useable stone. The very thin edge will always stay the same and continue to break thin in the tumbler.

When tumbling in a barrel tumbler, a mix of rough chips and broken slabs (flats) can be tumbled successfully together. We find that, although the final polish time in agates and jaspers took 4-5 days longer, the polish was great! The rounded stones were ready at two weeks of polishing, but the flats needed more time. All it took was an extra five days and no harm was done to the rounded stones with extra days of polishing.

A schedule we like to follow for rotary or barrel tumbling for beautiful polished agates and jaspers is 6 weeks for the Course grit stage (60/90), 2 weeks for Medium grit (150/220), 2 weeks Fine grit (500F), and Polish at two weeks. (Plus an extra five days if flats are included with the small stones.)

You'll notice while you are tumbling that the stones in the tumbler are filling less and less space due to the grinding process, and the ground rock, grit and water slurry is covering the stones more and more. We check the barrels each week. When adding more course grit (since the course grit breaks down quickly), we first drain the extra liquid (grit and water slurry) back down to a level of one to two inches below the stones, then add fresh Course grit (one tablespoon per pound of the estimated weight of rock remaining in the tumbler). Too much water slows the grinding process.

Recently, on the start of the third week of Course grit tumbling, small dogtooth amethyst crystals were added in the tumbler to take advantage of the extra space in the tumbler, and we continued the usual process of four more weeks at course grit, etc. (Another addition was broken picture jasper slabs.) The amethyst and picture jasper did not

need as much time tumbling in the course grit for nice smoothing - and when the tumbling process had been completed, the added stones turned out quite nice.

Remember, the tumbler should be from 1/2 to 3/4 full to achieve maximum grinding action and, of course, you want to tumble as many stones as possible in the least amount of time. The best way to tumble with the fastest completion time is to have all stones of the same hardness or type of gemstones. But keeping the tumbler full, or at maximum capacity for tumbling, requires that you have extra similar material for each grind sequence - course and medium to add to the tumbler when processing. (Little material is removed in the Fine grit stage and no additional stones are needed.)

If you have no additional stones to add in the course or medium tumbling stage, remember that ceramic media is a nice filler option to use instead and the ceramic pellets can be reused.

Then, in a short 3 month process, your round or tumbled polished flat gemstones are ready to be used in earrings, pendants and more by attaching a fold-over bail, drilling, cabbing, etc.

Editor's Note: The tumbling media and ceramic pellets described in this article are available on-line through A & A Supply at www.aajewelry.com or through their free catalogue. See their ad at the bottom of this page. Be sure to let them know that you learned of their store from the Pasadena Lapidary Society.



A & A JEWELRY SUPPLY
DIVISION OF ADFA INC.

The single source supplier for jewelers and gemologists.

319 W. 6th St., Los Angeles, CA 90014 (213) 627-8004

Monday-Friday: 9 a.m. - 5:30 p.m. Saturday: 9a.m. - 4:00 p.m.

Supplies, displays, boxes, jewelry tools, precious metal, findings, fine jewelry, stones, settings and wedding bands. A wide variety of lighting, photography boxes, inventory software and product labeling supplies. Metalsmithing and lapidary supplies. Free catalog. www.aajewelry.com.

We carry the best quality tools and equipment available in the industry, at the best prices in the United States! We can confidently say that no supplier has lower prices. Jewelry and Lapidary clubs are welcome !



FIELD TRIPS

By Joe Goetz



This month we're going to the Quartzsite Pow Wow. Held annually since 1967, some consider it to be the largest operating display of lapidary equipment in the country. You will find over 400 outdoor sites and a 10,000 sq. ft. building offering displays from around the country, dealers with gems, minerals, jewelry, demonstrations, commercial vendors, crafts, food and more - and it is handicapped accessible.

It is held at the Quartzsite Improvement Association at 235 East Ironwood Avenue in Quartzsite, AZ, from Wed, January 19, through Sunday, January 23, 2011. Hours from 9am-5pm.

Come as early as you can, return home when you must. There is no specific place to stay. Camping at Quartzsite offers two BLM campgrounds - LaPosa and LaPosa South - both on US 95 a few miles south of town and offering a camp host, level desert, water, trash and dump station at \$40 for 14 days. Many of our group will camp at Scaddan Wash which is a fairly level BLM camping area. No water, services or fee, and close to town. To get there take exit 19 (the 2nd Quartzsite exit on the east) and turn right. At the frontage road (Kuehn) turn left and go about a mile out until you see other campers. The further you get from the freeway - the less the traffic buzz.

2011 Field Trip Planning Meeting

At 10am Saturday, January 15th there will be a meeting of the local clubs to select places to go for field trips. Everyone is invited to attend and provide input. If you are unable to attend, please submit your ideas, with as many details about it that you know of, to Joe Goetz.

By email: joenmar1@verizon.net or mail to: 755 W. Dike Street, Glendora, CA 91740-4940.

FEDERATION NEWS

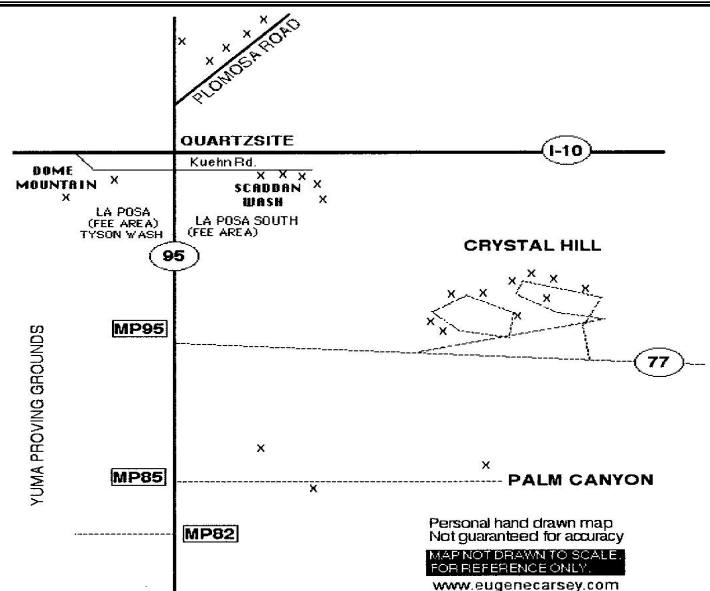
CFMS - California Federation of Mineralogical Societies

Your editor had an opportunity to talk with Rob Sankovich, Co-Leader of Field Trips South, at the Wiley's Well Field Trip. Our members will be interested to learn that Rob brings his own favorite places to explore. While Adam Dean's favorite is agates, says Rob, his is fossils and interesting specimen rocks. We can expect to see some new, unique and unusual places to explore and collect in the coming year!

The 2011 CFMS Show and Convention is May 13, 14 & 15 in Anderson, CA. Information will be available on the website: www.cfmsinc.org.

AFMS - American Federation of Mineralogical Societies

The AFMS has a contest each year for interesting original bulletin articles, drawings or illustrations. Entries are submitted by December 10th and must have been published in a lapidary club's bulletin that year. Categories include: 2010 Adult Articles, Adult Articles Advanced, & Written/Drawn; 2010 Original Articles - Juniors; 2010 Original Adult Poetry; 2010 Original Junior Poetry; 2010 Special Publications. You are encouraged to write an article for Rockhound Ramblings this year. The bulletin staff will work with you to get it included in a bulletin issue and submitted in the competition. The categories and rules can be seen on the internet at <http://www.amfed.org/news/contest/contest.htm>. If you do not have internet but are interested in submitting an article, notify the Editor and you can receive the information in the mail.



FARRIN O'CONNOR DESIGN



146 W. Bellevue Drive, Pasadena

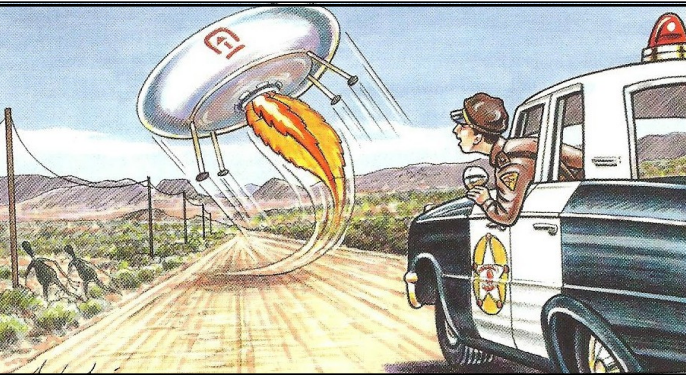
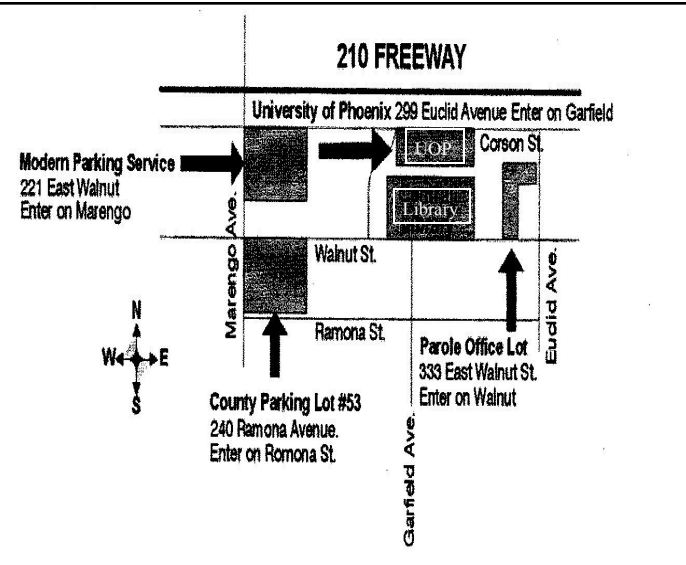
This is a true "hidden gem" for those interested in lapidary and jewelry work. A fully-stocked store with books, tools, beads and findings awaits you. Learn how to make jewelry from nothing-to-finished in their one-day classes. See upcoming classes and instructors at www.farrinoconnordesign.com/classes Or call them at (626) 796-5300. Free fenced parking.



Directions And Parking At The New Meeting Location By Chris Kyte

The Pasadena Main Library is located at 285 E. Walnut Street. To get there from the 210 freeway exit at Lake Avenue and turn south for two blocks then right on Walnut for 6-1/2 blocks.

We are not allowed to park in the lot behind the library but there are paid parking lots across Walnut next to the Police Department, on Walnut just west of the library, and on Los Robles just north of Walnut. There are also free spaces on several of the surrounding streets. The County lot has a flat \$3 rate after 4 PM and the Parole Office lot is free after 7 PM. I checked and all the streets in the vicinity now have parking meters but it appears that you don't have to pay after 5 PM.



"I heard that everyone is coming to the Quartzsite Shows this year - but....?"

LOCAL ROCK AND GEM SHOWS:

January

1 - 31 — QUARTZSITE, AZ Rocks, fossils, gems, beads, collectibles and miscellaneous all over town—all month long. Wholesale prices to the public. 9-5 daily; free admission. Camping in BLM areas or at motels 20 minutes away in Blythe, CA. Desert Winds Motel is about \$50. For event dates call the Quartzsite Business Chamber – 928-927-9321 or see the Web site: <http://www.ci.quartzsite.az.us/shows>

6 - 23 — LAUGHLIN, NV “Cloud’s Jamboree”. Rock, Gem, Arts-Crafts & Mineral Show at the Avi Resort & Casino, Laughlin, Nevada. Outdoor show January 1-31 9am to dusk at Avi Resort RV Park. Indoor show January 7-16 10am - 6pm at Avi Convention Center.

15 & 16 — LAUGHLIN, NV “Cloud’s Jamboree”. The Mt. San Antonio College Jewelry and Lapidary class will host an overnight bus trip to Clouds Jamboree at the Avi Casino in Laughlin, NV. Leaving early Saturday and returning late the Sunday before the MLK holiday. Fare, including room is \$99 per person (double occupancy in 2 queen bed room) and \$129 (single room). Seats are limited. Contact Mark Nelson to reserve a spot. Email: mnelsonair@aol.com or Phone: (909) 592-1322.

28 - 30 — REDLANDS: Annual symposium of the Mineralogical Society of Southern California Micromounters; San Bernardino County Museum, 2024 Orange Tree; giveaway tables, mineral sales, silent and live auctions, speakers, field trip; contact Eugene Reynolds, (714) 697-4435, or Dr. Robert Housley; e-mail: rhousley@its.caltech.edu; or Gene Reynolds; e-mail: garquartzman@hotmail.com



Navarro’s Creations
18 N. Mentor, Pasadena
(626) 577-2077

Let Emilly Navarro create something for you! Bring her a picture or sketch of your dream design for a free quote.
Open Monday - Saturday, 10am - 6pm

**January
2011**

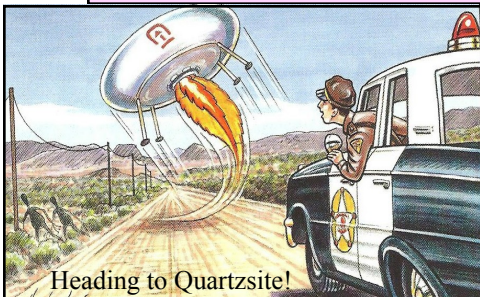
The Pasadena Lapidary Society, Inc.
Bulletin Editor:
1475 Paseo Maravilla
San Dimas, CA 91773-3908

First Class Mail

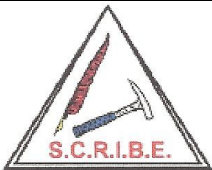


Pasadena, California
U.S.A.

**RETURN SERVICE
REQUESTED**



Heading to Quartzsite!



The Pasadena Lapidary Society is affiliated with the California and American Federations of Mineralogical Societies. Our editor is a member of the Special Congress Representing Involved Bulletin Editors.

JANUARY 2011

SUN	MON	TUE	WED	THU	FRI	SAT
						1 New Year's Day 
2	3	4	5 Board Meeting 	6	7 Nat'l Old Rock Day 	8
9 Workshop 	10	11	12	13	14	15 Bus Trip to Cloud's Jamboree 
16	17	18	19 Meeting In Sierra Madre 	20	21 POW WOW 	22 POW WOW 
23 POW WOW 	24 Gold Found at Sutter's Mill 1848 	25	26	27	28	29 Micromounters Redlands 
30	31					